

## Grade 5 Bolts

Zinc Plated - Course Thread



Order Number	Price Ref. #	Thread (in)	Length (in)	Hex (in)	Wt (lbs)
H5C14*12	UU00001	1/4-20	1/2	7/16	0.01
H5C14*34	UU00002	1/4-20	3/4	7/16	0.02
H5C14*1	UU00003	1/4-20	1	7/16	0.02
H5C14*114	UU00004	1/4-20	1-1/4	7/16	0.03
H5C14*112	UU00005	1/4-20	1-1/2	7/16	0.03
H5C14*134	UU00006	1/4-20	1-3/4	7/16	0.03
H5C14*2	UU00007	1/4-20	2	7/16	0.03
H5C14*214	UU00008	1/4-20	2-1/4	7/16	0.04
H5C14*212	UU00009	1/4-20	2-1/2	7/16	0.04
H5C14*234	UU00010	1/4-20	2-3/4	7/16	0.05
H5C14*3	UU00011	1/4-20	3	7/16	0.05
H5C14*314	UU00012	1/4-20	3-1/4	7/16	0.05
H5C14*312	UU00013	1/4-20	3-1/2	7/16	0.06
H5C14*4	UU00014	1/4-20	4	7/16	0.06
H5C14*412	UU00015	1/4-20	4-1/2	7/16	0.07
H5C14*5	UU00016	1/4-20	5	7/16	0.07
H5C14*512	UU00017	1/4-20	5-1/2	7/16	0.08
H5C14*6	UU00018	1/4-20	6	7/16	0.09
H5C14*7	UU00019	1/4-20	7	7/16	0.09
H5C516*12	UU00020	5/16-18	1/2	1/2	0.02
H5C516*58	UU00021	5/16-18	5/8	1/2	0.02
H5C516*34	UU00022	5/16-18	3/4	1/2	0.03
H5C516*1	UU00023	5/16-18	1	1/2	0.03
H5C516*114	UU00024	5/16-18	1-1/4	1/2	0.04
H5C516*112	UU00025	5/16-18	1-1/2	1/2	0.04
H5C516*134	UU00026	5/16-18	1-3/4	1/2	0.05
H5C516*2	UU00027	5/16-18	2	1/2	0.05
H5C516*214	UU00028	5/16-18	2-1/4	1/2	0.06
H5C516*212	UU00029	5/16-18	2-1/2	1/2	0.06
H5C516*234	UU00030	5/16-18	2-3/4	1/2	0.07
H5C516*3	UU00031	5/16-18	3	1/2	0.07
H5C516*314	UU00032	5/16-18	3-1/4	1/2	0.08
H5C516*312	UU00033	5/16-18	3-1/2	1/2	0.09
H5C516*4	UU00034	5/16-18	4	1/2	0.09
H5C516*412	UU00035	5/16-18	4-1/2	1/2	0.1
H5C516*5	UU00036	5/16-18	5	1/2	0.1
H5C516*512	UU00037	5/16-18	5-1/2	1/2	0.1
H5C516*6	UU00038	5/16-18	6	1/2	0.1
H5C516*7	UU00039	5/16-18	7	1/2	0.1
H5C38*12	UU00040	3/8-16	1/2	9/16	0.03
H5C38*34	UU00041	3/8-16	3/4	9/16	0.04
H5C38*1	UU00042	3/8-16	1	9/16	0.04
H5C38*114	UU00043	3/8-16	1-1/4	9/16	0.05
H5C38*112	UU00044	3/8-16	1-1/2	9/16	0.06
H5C38*134	UU00045	3/8-16	1-3/4	9/16	0.07
H5C38*2	UU00046	3/8-16	2	9/16	0.07
H5C38*214	UU00047	3/8-16	2-1/4	9/16	0.08
H5C38*212	UU00048	3/8-16	2-1/2	9/16	0.08
H5C38*234	UU00049	3/8-16	2-3/4	9/16	0.09
H5C38*3	UU00050	3/8-16	3	9/16	0.1
H5C38*314	UU00051	3/8-16	3-1/4	9/16	0.1
H5C38*312	UU00052	3/8-16	3-1/2	9/16	0.1
H5C38*334	UU00053	3/8-16	3-3/4	9/16	0.1
H5C38*4	UU00054	3/8-16	4	9/16	0.1
H5C38*412	UU00055	3/8-16	4-1/2	9/16	0.2
H5C38*5	UU00056	3/8-16	5	9/16	0.2
H5C38*512	UU00057	3/8-16	5-1/2	9/16	0.2
H5C38*6	UU00058	3/8-16	6	9/16	0.2
H5C38*612	UU00059	3/8-16	6-1/2	9/16	0.2
H5C38*7	UU00060	3/8-16	7	9/16	0.2
H5C38*712	UU00061	3/8-16	7-1/2	9/16	0.3
H5C38*8	UU00062	3/8-16	8	9/16	0.3
H5C716*34	UU00063	7/16-14	3/4	5/8	0.05
H5C716*1	UU00064	7/16-14	1	5/8	0.06
H5C716*114	UU00065	7/16-14	1-1/4	5/8	0.07
H5C716*112	UU00066	7/16-14	1-1/2	5/8	0.08
H5C716*134	UU00067	7/16-14	1-3/4	5/8	0.09
H5C716*2	UU00068	7/16-14	2	5/8	0.1

Order Number	Price Ref. #	Thread (in)	Length (in)	Hex (in)	Wt (lbs)
H5C716*214	UU00069	7/16-14	2-1/4	5/8	0.1
H5C716*212	UU00070	7/16-14	2-1/2	5/8	0.1
H5C716*234	UU00071	7/16-14	2-3/4	5/8	0.2
H5C716*3	UU00072	7/16-14	3	5/8	0.2
H5C716*312	UU00073	7/16-14	3-1/2	5/8	0.2
H5C716*4	UU00074	7/16-14	4	5/8	0.2
H5C716*412	UU00075	7/16-14	4-1/2	5/8	0.2
H5C716*5	UU00076	7/16-14	5	5/8	0.3
H5C716*512	UU00077	7/16-14	5-1/2	5/8	0.3
H5C716*6	UU00078	7/16-14	6	5/8	0.3
H5C716*7	UU00079	7/16-14	7	5/8	0.3
H5C716*8	UU00080	7/16-14	8	5/8	0.3
H5C12*34	UU00081	1/2-13	3/4	3/4	0.07
H5C12*1	UU00082	1/2-13	1	3/4	0.08
H5C12*114	UU00083	1/2-13	1-1/4	3/4	0.09
H5C12*112	UU00084	1/2-13	1-1/2	3/4	0.1
H5C12*134	UU00085	1/2-13	1-3/4	3/4	0.1
H5C12*2	UU00086	1/2-13	2	3/4	0.1
H5C12*214	UU00087	1/2-13	2-1/4	3/4	0.1
H5C12*212	UU00088	1/2-13	2-1/2	3/4	0.1
H5C12*234	UU00089	1/2-13	2-3/4	3/4	0.2
H5C12*3	UU00090	1/2-13	3	3/4	0.2
H5C12*314	UU00091	1/2-13	3-1/4	3/4	0.2
H5C12*312	UU00092	1/2-13	3-1/2	3/4	0.2
H5C12*4	UU00093	1/2-13	4	3/4	0.2
H5C12*412	UU00094	1/2-13	4-1/2	3/4	0.3
H5C12*5	UU00095	1/2-13	5	3/4	0.3
H5C12*512	UU00096	1/2-13	5-1/2	3/4	0.3
H5C12*6	UU00097	1/2-13	6	3/4	0.4
H5C12*612	UU00098	1/2-13	6-1/2	3/4	0.4
H5C12*7	UU00099	1/2-13	7	3/4	0.4
H5C12*712	UU00100	1/2-13	7-1/2	3/4	0.5
H5C12*8	UU00101	1/2-13	8	3/4	0.5
H5C12*9	UU00102	1/2-13	9	3/4	0.6
H5C12*10	UU00103	1/2-13	10	3/4	0.6
H5C916*1	UU00104	9/16-12	1	13/16	0.1
H5C916*114	UU00105	9/16-12	1-1/4	13/16	0.1
H5C916*112	UU00106	9/16-12	1-1/2	13/16	0.1
H5C916*134	UU00107	9/16-12	1-3/4	13/16	0.2
H5C916*2	UU00108	9/16-12	2	13/16	0.2
H5C916*214	UU00109	9/16-12	2-1/4	13/16	0.2
H5C916*212	UU00110	9/16-12	2-1/2	13/16	0.2
H5C916*234	UU00111	9/16-12	2-3/4	13/16	0.2
H5C916*3	UU00112	9/16-12	3	13/16	0.2
H5C916*312	UU00113	9/16-12	3-1/2	13/16	0.3
H5C916*4	UU00114	9/16-12	4	13/16	0.3
H5C916*412	UU00115	9/16-12	4-1/2	13/16	0.4
H5C916*5	UU00116	9/16-12	5	13/16	0.4
H5C916*512	UU00117	9/16-12	5-1/2	13/16	0.4
H5C916*6	UU00118	9/16-12	6	13/16	0.4
H5C916*612	UU00119	9/16-12	6-1/2	13/16	0.5
H5C58*1	UU00120	5/8-11	1	15/16	0.1
H5C58*114	UU00121	5/8-11	1-1/4	15/16	0.2
H5C58*112	UU00122	5/8-11	1-1/2	15/16	0.2
H5C58*134	UU00123	5/8-11	1-3/4	15/16	0.2
H5C58*2	UU00124	5/8-11	2	15/16	0.2
H5C58*214	UU00125	5/8-11	2-1/4	15/16	0.3
H5C58*212	UU00126	5/8-11	2-1/2	15/16	0.3
H5C58*234	UU00127	5/8-11	2-3/4	15/16	0.3
H5C58*3	UU00128	5/8-11	3	15/16	0.3
H5C58*312	UU00129	5/8-11	3-1/2	15/16	0.4
H5C58*4	UU00130	5/8-11	4	15/16	0.4
H5C58*412	UU00131	5/8-11	4-1/2	15/16	0.5
H5C58*5	UU00132	5/8-11	5	15/16	0.5
H5C58*512	UU00133	5/8-11	5-1/2	15/16	0.6
H5C58*6	UU00134	5/8-11	6	15/16	0.6
H5C58*612	UU00135	5/8-11	6-1/2	15/16	0.6
H5C58*7	UU00136	5/8-11	7	15/16	0.6

## Zinc Plated - Course Thread (Continued)

Order Number	Price Ref. #	Thread (in)	Length (in)	Hex (in)	Wt (lbs)
H5C58*8	UU00137	5/8-11	8	15/16	0.7
H5C58*10	UU00138	5/8-11	10	15/16	0.9
H5C34*1	UU00139	3/4-10	1	1 1/8	0.2
H5C34*114	UU00140	3/4-10	1-1/4	1 1/8	0.3
H5C34*112	UU00141	3/4-10	1-1/2	1 1/8	0.3
H5C34*134	UU00142	3/4-10	1-3/4	1 1/8	0.3
H5C34*2	UU00143	3/4-10	2	1 1/8	0.3
H5C34*214	UU00144	3/4-10	2-1/4	1 1/8	0.3
H5C34*212	UU00145	3/4-10	2-1/2	1 1/8	0.4
H5C34*234	UU00146	3/4-10	2-3/4	1 1/8	0.4
H5C34*3	UU00147	3/4-10	3	1 1/8	0.5
H5C34*314	UU00148	3/4-10	3-1/4	1 1/8	0.5
H5C34*312	UU00149	3/4-10	3-1/2	1 1/8	0.6
H5C34*4	UU00150	3/4-10	4	1 1/8	0.6
H5C34*412	UU00151	3/4-10	4-1/2	1 1/8	0.7
H5C34*5	UU00152	3/4-10	5	1 1/8	0.7
H5C34*512	UU00153	3/4-10	5-1/2	1 1/8	0.8
H5C34*6	UU00154	3/4-10	6	1 1/8	0.8
H5C34*612	UU00155	3/4-10	6-1/2	1 1/8	0.9
H5C34*7	UU00156	3/4-10	7	1 1/8	0.9
H5C34*712	UU00157	3/4-10	7-1/2	1 1/8	1.0
H5C34*8	UU00158	3/4-10	8	1 1/8	1.1
H5C34*9	UU00159	3/4-10	9	1 1/8	1.2
H5C34*10	UU00160	3/4-10	10	1 1/8	1.3
H5C78*112	UU00161	7/8-9	1-1/2	15/16	0.4
H5C78*2	UU00162	7/8-9	2	15/16	0.5

Order Number	Price Ref. #	Thread (in)	Length (in)	Hex (in)	Wt (lbs)
H5C78*214	UU00163	7/8-9	2-1/4	15/16	0.5
H5C78*212	UU00164	7/8-9	2-1/2	15/16	0.6
H5C78*3	UU00165	7/8-9	3	15/16	0.6
H5C78*312	UU00166	7/8-9	3-1/2	15/16	0.7
H5C78*4	UU00167	7/8-9	4	15/16	0.8
H5C78*412	UU00168	7/8-9	4-1/2	15/16	0.9
H5C78*5	UU00169	7/8-9	5	15/16	1.0
H5C78*512	UU00170	7/8-9	5-1/2	15/16	1.1
H5C78*6	UU00171	7/8-9	6	15/16	1.2
H5C78*7	UU00172	7/8-9	7	15/16	1.3
H5C78*8	UU00173	7/8-9	8	15/16	1.5
H5C78*10	UU00174	7/8-9	10	15/16	1.8
H5C1*112	UU00175	1-8	1-1/2	1-1/2	0.6
H5C1*2	UU00176	1-8	2	1-1/2	0.7
H5C1*212	UU00177	1-8	2-1/2	1-1/2	0.8
H5C1*3	UU00178	1-8	3	1-1/2	0.9
H5C1*312	UU00179	1-8	3-1/2	1-1/2	1.0
H5C1*4	UU00180	1-8	4	1-1/2	1.1
H5C1*412	UU00181	1-8	4-1/2	1-1/2	1.2
H5C1*5	UU00182	1-8	5	1-1/2	1.3
H5C1*512	UU00183	1-8	5-1/2	1-1/2	1.4
H5C1*6	UU00184	1-8	6	1-1/2	1.5
H5C1*7	UU00185	1-8	7	1-1/2	1.7
H5C1*8	UU00186	1-8	8	1-1/2	2.0
H5C1*9	UU00187	1-8	9	1-1/2	2.2
H5C1*10	UU00188	1-8	10	1-1/2	2.4

## Grade 8 Bolts

### Yellow Zinc - Course Thread



- Bolts larger than 1 inch may or may not be coated

Order Number	Price Ref. #	Thread (in)	Length (in)	Hex (in)	Wt (lbs)
H8C14*12	UU00189	1/4-20	1/2	7/16	0.01
H8C14*34	UU00190	1/4-20	3/4	7/16	0.02
H8C14*1	UU00191	1/4-20	1	7/16	0.02
H8C14*114	UU00192	1/4-20	1-1/4	7/16	0.03
H8C14*112	UU00193	1/4-20	1-1/2	7/16	0.03
H8C14*134	UU00194	1/4-20	1-3/4	7/16	0.03
H8C14*2	UU00195	1/4-20	2	7/16	0.03
H8C14*214	UU00196	1/4-20	2-1/4	7/16	0.04
H8C14*212	UU00197	1/4-20	2-1/2	7/16	0.04
H8C14*234	UU00198	1/4-20	2-3/4	7/16	0.05
H8C14*3	UU00199	1/4-20	3	7/16	0.05
H8C14*314	UU00200	1/4-20	3-1/4	7/16	0.05
H8C14*312	UU00201	1/4-20	3-1/2	7/16	0.06
H8C14*334	UU00202	1/4-20	3-3/4	7/16	0.06
H8C14*4	UU00203	1/4-20	4	7/16	0.07
H8C14*412	UU00204	1/4-20	4-1/2	7/16	0.07
H8C14*5	UU00205	1/4-20	5	7/16	0.08
H8C14*512	UU00206	1/4-20	5-1/2	7/16	0.09
H8C14*6	UU00207	1/4-20	6	7/16	0.09
H8C516*12	UU00208	5/16-18	1/2	1/2	0.02
H8C516*34	UU00209	5/16-18	3/4	1/2	0.03
H8C516*1	UU00210	5/16-18	1	1/2	0.03
H8C516*114	UU00211	5/16-18	1-1/4	1/2	0.04
H8C516*112	UU00212	5/16-18	1-1/2	1/2	0.04
H8C516*134	UU00213	5/16-18	1-3/4	1/2	0.05
H8C516*2	UU00214	5/16-18	2	1/2	0.05
H8C516*214	UU00215	5/16-18	2-1/4	1/2	0.06
H8C516*212	UU00216	5/16-18	2-1/2	1/2	0.06
H8C516*3	UU00217	5/16-18	3	1/2	0.07
H8C516*312	UU00218	5/16-18	3-1/2	1/2	0.09
H8C516*4	UU00219	5/16-18	4	1/2	0.09
H8C516*412	UU00220	5/16-18	4-1/2	1/2	0.1

Order Number	Price Ref. #	Thread (in)	Length (in)	Hex (in)	Wt (lbs)
H8C516*5	UU00221	5/16-18	5	1/2	0.1
H8C516*512	UU00222	5/16-18	5-1/2	1/2	0.1
H8C516*6	UU00223	5/16-18	6	1/2	0.1
H8C38*12	UU00224	3/8-16	1/2	9/16	0.03
H8C38*34	UU00225	3/8-16	3/4	9/16	0.04
H8C38*1	UU00226	3/8-16	1	9/16	0.04
H8C38*114	UU00227	3/8-16	1-1/4	9/16	0.05
H8C38*112	UU00228	3/8-16	1-1/2	9/16	0.06
H8C38*134	UU00229	3/8-16	1-3/4	9/16	0.07
H8C38*2	UU00230	3/8-16	2	9/16	0.07
H8C38*214	UU00231	3/8-16	2-1/4	9/16	0.08
H8C38*212	UU00232	3/8-16	2-1/2	9/16	0.08
H8C38*3	UU00233	3/8-16	3	9/16	0.1
H8C38*314	UU00234	3/8-16	3-1/4	9/16	0.1
H8C38*312	UU00235	3/8-16	3-1/2	9/16	0.1
H8C38*4	UU00236	3/8-16	4	9/16	0.1
H8C38*412	UU00237	3/8-16	4-1/2	9/16	0.2
H8C38*5	UU00238	3/8-16	5	9/16	0.2
H8C38*512	UU00239	3/8-16	5-1/2	9/16	0.2
H8C38*6	UU00240	3/8-16	6	9/16	0.2
H8C38*7	UU00241	3/8-16	7	9/16	0.2
H8C716*34	UU00242	7/16-14	3/4	5/8	0.05
H8C716*1	UU00243	7/16-14	1	5/8	0.06
H8C716*114	UU00244	7/16-14	1-1/4	5/8	0.07
H8C716*112	UU00245	7/16-14	1-1/2	5/8	0.08
H8C716*134	UU00246	7/16-14	1-3/4	5/8	0.09
H8C716*2	UU00247	7/16-14	2	5/8	0.1
H8C716*214	UU00248	7/16-14	2-1/4	5/8	0.1
H8C716*212	UU00249	7/16-14	2-1/2	5/8	0.1
H8C716*3	UU00250	7/16-14	3	5/8	0.2
H8C716*312	UU00251	7/16-14	3-1/2	5/8	0.2
H8C716*4	UU00252	7/16-14	4	5/8	0.2

## Grade 8 Bolts

Yellow Zinc - Course Thread (Continued)

Order Number	Price Ref. #	Thread (in)	Length (in)	Hex (in)	Wt (lbs)
H8C716*412	UU00253	7/16-14	4-1/2	5/8	0.2
H8C716*5	UU00254	7/16-14	5	5/8	0.3
H8C716*512	UU00255	7/16-14	5-1/2	5/8	0.3
H8C716*6	UU00256	7/16-14	6	5/8	0.3
H8C12*34	UU00257	1/2-13	3/4	3/4	0.07
H8C12*1	UU00258	1/2-13	1	3/4	0.08
H8C12*114	UU00259	1/2-13	1-1/4	3/4	0.09
H8C12*112	UU00260	1/2-13	1-1/2	3/4	0.1
H8C12*134	UU00261	1/2-13	1-3/4	3/4	0.1
H8C12*2	UU00262	1/2-13	2	3/4	0.1
H8C12*214	UU00263	1/2-13	2-1/4	3/4	0.1
H8C12*212	UU00264	1/2-13	2-1/2	3/4	0.1
H8C12*3	UU00265	1/2-13	3	3/4	0.2
H8C12*312	UU00266	1/2-13	3-1/2	3/4	0.2
H8C12*4	UU00267	1/2-13	4	3/4	0.2
H8C12*412	UU00268	1/2-13	4-1/2	3/4	0.3
H8C12*5	UU00269	1/2-13	5	3/4	0.3
H8C12*512	UU00270	1/2-13	5-1/2	3/4	0.3
H8C12*6	UU00271	1/2-13	6	3/4	0.4
H8C12*612	UU00272	1/2-13	6-1/2	3/4	0.4
H8C12*7	UU00273	1/2-13	7	3/4	0.4
H8C12*8	UU00274	1/2-13	8	3/4	0.5
H8C12*9	UU00275	1/2-13	9	3/4	0.6
H8C12*10	UU00276	1/2-13	10	3/4	0.6
H8C12*11	UU00277	1/2-13	11	3/4	0.7
H8C916*1	UU00278	9/16-12	1	13/16	0.1
H8C916*114	UU00279	9/16-12	1-1/4	13/16	0.1
H8C916*112	UU00280	9/16-12	1-1/2	13/16	0.1
H8C916*134	UU00281	9/16-12	1-3/4	13/16	0.2
H8C916*2	UU00282	9/16-12	2	13/16	0.2
H8C916*214	UU00283	9/16-12	2-1/4	13/16	0.2
H8C916*212	UU00284	9/16-12	2-1/2	13/16	0.2
H8C916*3	UU00285	9/16-12	3	13/16	0.2
H8C916*312	UU00286	9/16-12	3-1/2	13/16	0.3
H8C916*4	UU00287	9/16-12	4	13/16	0.3
H8C916*412	UU00288	9/16-12	4-1/2	13/16	0.4
H8C916*5	UU00289	9/16-12	5	13/16	0.4
H8C916*512	UU00290	9/16-12	5-1/2	13/16	0.4
H8C916*6	UU00291	9/16-12	6	13/16	0.4
H8C58*1	UU00292	5/8-11	1	15/16	0.1
H8C58*114	UU00293	5/8-11	1-1/4	15/16	0.2
H8C58*112	UU00294	5/8-11	1-1/2	15/16	0.2
H8C58*134	UU00295	5/8-11	1-3/4	15/16	0.2
H8C58*2	UU00296	5/8-11	2	15/16	0.2
H8C58*214	UU00297	5/8-11	2-1/4	15/16	0.3
H8C58*212	UU00298	5/8-11	2-1/2	15/16	0.3
H8C58*3	UU00299	5/8-11	3	15/16	0.3
H8C58*314	UU00300	5/8-11	3-1/4	15/16	0.3
H8C58*312	UU00301	5/8-11	3-1/2	15/16	0.4
H8C58*4	UU00302	5/8-11	4	15/16	0.4
H8C58*412	UU00303	5/8-11	4-1/2	15/16	0.5
H8C58*5	UU00304	5/8-11	5	15/16	0.5
H8C58*512	UU00305	5/8-11	5-1/2	15/16	0.6
H8C58*6	UU00306	5/8-11	6	15/16	0.6
H8C58*7	UU00307	5/8-11	7	15/16	0.6
H8C58*8	UU00308	5/8-11	8	15/16	0.7
H8C58*9	UU00309	5/8-11	9	15/16	0.8
H8C58*10	UU00310	5/8-11	10	15/16	0.9
H8C58*11	UU00311	5/8-11	11	15/16	1.0
H8C34*1	UU00312	3/4-10	1	1 1/8	0.2
H8C34*114	UU00313	3/4-10	1-1/4	1 1/8	0.3
H8C34*112	UU00314	3/4-10	1-1/2	1 1/8	0.3
H8C34*134	UU00315	3/4-10	1-3/4	1 1/8	0.3
H8C34*2	UU00316	3/4-10	2	1 1/8	0.3
H8C34*214	UU00317	3/4-10	2-1/4	1 1/8	0.3
H8C34*212	UU00318	3/4-10	2-1/2	1 1/8	0.4
H8C34*234	UU00319	3/4-10	2-3/4	1 1/8	0.4
H8C34*3	UU00320	3/4-10	3	1 1/8	0.5

Order Number	Price Ref. #	Thread (in)	Length (in)	Hex (in)	Wt (lbs)
H8C34*314	UU00321	3/4-10	3-1/4	1 1/8	0.5
H8C34*312	UU00322	3/4-10	3-1/2	1 1/8	0.6
H8C34*4	UU00323	3/4-10	4	1 1/8	0.6
H8C34*412	UU00324	3/4-10	4-1/2	1 1/8	0.7
H8C34*5	UU00325	3/4-10	5	1 1/8	0.7
H8C34*512	UU00326	3/4-10	5-1/2	1 1/8	0.8
H8C34*6	UU00327	3/4-10	6	1 1/8	0.8
H8C34*7	UU00328	3/4-10	7	1 1/8	0.9
H8C34*8	UU00329	3/4-10	8	1 1/8	1.1
H8C34*9	UU00330	3/4-10	9	1 1/8	1.2
H8C34*10	UU00331	3/4-10	10	1 1/8	1.3
H8C34*1034	UU00332	3/4-10	10-3/4	1 1/8	1.4
H8C34*12	UU00333	3/4-10	12	1 1/8	1.5
H8C78*112	UU00334	7/8-9	1-1/2	1 5/16	0.4
H8C78*2	UU00335	7/8-9	2	1 5/16	0.5
H8C78*214	UU00336	7/8-9	2-1/4	1 5/16	0.5
H8C78*212	UU00337	7/8-9	2-1/2	1 5/16	0.6
H8C78*3	UU00338	7/8-9	3	1 5/16	0.6
H8C78*312	UU00339	7/8-9	3-1/2	1 5/16	0.7
H8C78*4	UU00340	7/8-9	4	1 5/16	0.8
H8C78*412	UU00341	7/8-9	4-1/2	1 5/16	0.9
H8C78*5	UU00342	7/8-9	5	1 5/16	1.0
H8C78*512	UU00343	7/8-9	5-1/2	1 5/16	1.1
H8C78*6	UU00344	7/8-9	6	1 5/16	1.2
H8C78*7	UU00345	7/8-9	7	1 5/16	1.3
H8C78*8	UU00346	7/8-9	8	1 5/16	1.5
H8C78*10	UU00347	7/8-9	10	1 5/16	1.8
H8C78*12	UU00348	7/8-9	12	1 5/16	2.1
H8C1*2	UU00349	1-8	2	1-1/2	0.6
H8C1*214	UU00350	1-8	2-1/4	1-1/2	0.7
H8C1*212	UU00351	1-8	2-1/2	1-1/2	0.8
H8C1*3	UU00352	1-8	3	1-1/2	0.9
H8C1*312	UU00353	1-8	3-1/2	1-1/2	1.0
H8C1*4	UU00354	1-8	4	1-1/2	1.1
H8C1*412	UU00355	1-8	4-1/2	1-1/2	1.2
H8C1*5	UU00356	1-8	5	1-1/2	1.3
H8C1*512	UU00357	1-8	5-1/2	1-1/2	1.4
H8C1*6	UU00358	1-8	6	1-1/2	1.5
H8C1*7	UU00359	1-8	7	1-1/2	1.7
H8C1*8	UU00360	1-8	8	1-1/2	2.0
H8C1*9	UU00361	1-8	9	1-1/2	2.2
H8C1*10	UU00362	1-8	10	1-1/2	2.4
H8C118*3	UU00363	1 1/8-7	3	1 11/16	1.4
H8C118*4	UU00364	1 1/8-7	4	1 11/16	1.4
H8C118*5	UU00365	1 1/8-7	5	1 11/16	1.7
H8C118*512	UU00366	1 1/8-7	5-1/2	1 11/16	1.8
H8C118*6	UU00367	1 1/8-7	6	1 11/16	2.0
H8C118*7	UU00368	1 1/8-7	7	1 11/16	2.2
H8C118*8	UU00369	1 1/8-7	8	1 11/16	2.5
H8C114*3	UU00370	1-1/4-7	3	1-7/8	1.5
H8C114*4	UU00371	1-1/4-7	4	1-7/8	1.8
H8C114*5	UU00372	1-1/4-7	5	1-7/8	2.2
H8C114*6	UU00373	1-1/4-7	6	1-7/8	2.5
H8C114*7	UU00374	1-1/4-7	7	1-7/8	2.8
H8C114*712	UU00375	1-1/4-7	7-1/2	1-7/8	3.0
H8C114*8	UU00376	1-1/4-7	8	1-7/8	3.2
H8C114*9	UU00377	1-1/4-7	9	1-7/8	3.5
H8C114*10	UU00378	1-1/4-7	10	1-7/8	3.9
H8C112*4	UU00379	1-1/2-6	4	2-1/4	2.8
H8C112*6	UU00380	1-1/2-6	6	2-1/4	3.8
H8C112*8	UU00381	1-1/2-6	8	2-1/4	4.9
H8C112*9	UU00382	1-1/2-6	9	2-1/4	5.3
H8C112*10	UU00383	1-1/2-6	10	2-1/4	5.7
H8C112*11	UU00384	1-1/2-6	11	2-1/4	6.1
H8C112*12	UU00385	1-1/2-6	12	2-1/4	6.5

## Yellow Zinc - Fine Thread

Order Number	Price Ref. #	Thread (in)	Length (in)	Hex (in)	Wt (lbs)
H8F14*12	UU00386	1/4-28	1/2	7/16	0.01
H8F14*34	UU00387	1/4-28	3/4	7/16	0.02
H8F14*1	UU00388	1/4-28	1	7/16	0.02
H8F14*114	UU00389	1/4-28	1-1/4	7/16	0.03
H8F14*112	UU00390	1/4-28	1-1/2	7/16	0.03
H8F14*134	UU00391	1/4-28	1-3/4	7/16	0.03
H8F14*2	UU00392	1/4-28	2	7/16	0.03
H8F14*212	UU00393	1/4-28	2-1/2	7/16	0.04
H8F14*3	UU00394	1/4-28	3	7/16	0.05
H8F14*312	UU00395	1/4-28	3-1/2	7/16	0.06
H8F14*4	UU00396	1/4-28	4	7/16	0.07
H8F14*412	UU00397	1/4-28	4-1/2	7/16	0.07
H8F14*5	UU00398	1/4-28	5	7/16	0.08
H8F14*512	UU00399	1/4-28	5-1/2	7/16	0.09
H8F14*6	UU00400	1/4-28	6	7/16	0.09
H8F516*12	UU00401	5/16-24	1/2	1/2	0.02
H8F516*34	UU00402	5/16-24	3/4	1/2	0.03
H8F516*1	UU00403	5/16-24	1	1/2	0.03
H8F516*114	UU00404	5/16-24	1-1/4	1/2	0.04
H8F516*112	UU00405	5/16-24	1-1/2	1/2	0.04
H8F516*134	UU00406	5/16-24	1-3/4	1/2	0.05
H8F516*2	UU00407	5/16-24	2	1/2	0.05
H8F516*214	UU00408	5/16-24	2-1/4	1/2	0.06
H8F516*212	UU00409	5/16-24	2-1/2	1/2	0.06
H8F516*234	UU00410	5/16-24	2-3/4	1/2	0.07
H8F516*3	UU00411	5/16-24	3	1/2	0.07
H8F516*312	UU00412	5/16-24	3-1/2	1/2	0.09
H8F516*4	UU00413	5/16-24	4	1/2	0.09
H8F516*412	UU00414	5/16-24	4-1/2	1/2	0.1
H8F516*5	UU00415	5/16-24	5	1/2	0.1
H8F516*512	UU00416	5/16-24	5-1/2	1/2	0.1
H8F516*6	UU00417	5/16-24	6	1/2	0.1
H8F38*12	UU00418	3/8-24	1/2	9/16	0.03
H8F38*34	UU00419	3/8-24	3/4	9/16	0.04
H8F38*1	UU00420	3/8-24	1	9/16	0.04
H8F38*114	UU00421	3/8-24	1-1/4	9/16	0.05
H8F38*112	UU00422	3/8-24	1-1/2	9/16	0.06
H8F38*134	UU00423	3/8-24	1-3/4	9/16	0.07
H8F38*2	UU00424	3/8-24	2	9/16	0.07
H8F38*214	UU00425	3/8-24	2-1/4	9/16	0.08
H8F38*212	UU00426	3/8-24	2-1/2	9/16	0.08
H8F38*234	UU00427	3/8-24	2-3/4	9/16	0.09
H8F38*3	UU00428	3/8-24	3	9/16	0.1
H8F38*314	UU00429	3/8-24	3-1/4	9/16	0.1
H8F38*312	UU00430	3/8-24	3-1/2	9/16	0.1
H8F38*4	UU00431	3/8-24	4	9/16	0.1
H8F38*412	UU00432	3/8-24	4-1/2	9/16	0.2
H8F38*5	UU00433	3/8-24	5	9/16	0.2
H8F38*512	UU00434	3/8-24	5-1/2	9/16	0.2
H8F38*6	UU00435	3/8-24	6	9/16	0.2
H8F38*7	UU00436	3/8-24	7	9/16	0.2
H8F38*8	UU00437	3/8-24	8	9/16	0.3
H8F716*34	UU00438	7/16-20	3/4	5/8	0.05
H8F716*1	UU00439	7/16-20	1	5/8	0.06
H8F716*114	UU00440	7/16-20	1-1/4	5/8	0.07
H8F716*112	UU00441	7/16-20	1-1/2	5/8	0.08
H8F716*134	UU00442	7/16-20	1-3/4	5/8	0.09
H8F716*2	UU00443	7/16-20	2	5/8	0.1
H8F716*214	UU00444	7/16-20	2-1/4	5/8	0.1
H8F716*212	UU00445	7/16-20	2-1/2	5/8	0.1
H8F716*3	UU00446	7/16-20	3	5/8	0.2
H8F716*312	UU00447	7/16-20	3-1/2	5/8	0.2
H8F716*4	UU00448	7/16-20	4	5/8	0.2
H8F716*412	UU00449	7/16-20	4-1/2	5/8	0.2
H8F716*5	UU00450	7/16-20	5	5/8	0.3
H8F716*512	UU00451	7/16-20	5-1/2	5/8	0.3
H8F716*6	UU00452	7/16-20	6	5/8	0.3
H8F12*34	UU00453	1/2-20	3/4	3/4	0.07

Order Number	Price Ref. #	Thread (in)	Length (in)	Hex (in)	Wt (lbs)
H8F12*1	UU00454	1/2-20	1	3/4	0.08
H8F12*114	UU00455	1/2-20	1-1/4	3/4	0.09
H8F12*112	UU00456	1/2-20	1-1/2	3/4	0.1
H8F12*134	UU00457	1/2-20	1-3/4	3/4	0.1
H8F12*2	UU00458	1/2-20	2	3/4	0.1
H8F12*214	UU00459	1/2-20	2-1/4	3/4	0.1
H8F12*212	UU00460	1/2-20	2-1/2	3/4	0.1
H8F12*234	UU00461	1/2-20	2-3/4	3/4	0.2
H8F12*3	UU00462	1/2-20	3	3/4	0.2
H8F12*312	UU00463	1/2-20	3-1/2	3/4	0.2
H8F12*4	UU00464	1/2-20	4	3/4	0.2
H8F12*412	UU00465	1/2-20	4-1/2	3/4	0.3
H8F12*5	UU00466	1/2-20	5	3/4	0.3
H8F12*512	UU00467	1/2-20	5-1/2	3/4	0.3
H8F12*6	UU00468	1/2-20	6	3/4	0.4
H8F12*612	UU00469	1/2-20	6-1/2	3/4	0.4
H8F12*7	UU00470	1/2-20	7	3/4	0.4
H8F12*8	UU00471	1/2-20	8	3/4	0.5
H8F916*1	UU00472	9/16-18	1	13/16	0.1
H8F916*114	UU00473	9/16-18	1-1/4	13/16	0.1
H8F916*112	UU00474	9/16-18	1-1/2	13/16	0.1
H8F916*134	UU00475	9/16-18	1-3/4	13/16	0.2
H8F916*2	UU00476	9/16-18	2	13/16	0.2
H8F916*214	UU00477	9/16-18	2-1/4	13/16	0.2
H8F916*212	UU00478	9/16-18	2-1/2	13/16	0.2
H8F916*234	UU00479	9/16-18	2-3/4	13/16	0.2
H8F916*3	UU00480	9/16-18	3	13/16	0.2
H8F916*312	UU00481	9/16-18	3-1/2	13/16	0.3
H8F916*4	UU00482	9/16-18	4	13/16	0.3
H8F916*412	UU00483	9/16-18	4-1/2	13/16	0.4
H8F916*5	UU00484	9/16-18	5	13/16	0.4
H8F916*512	UU00485	9/16-18	5-1/2	13/16	0.4
H8F916*6	UU00486	9/16-18	6	13/16	0.4
H8F58*1	UU00487	5/8-18	1	15/16	0.1
H8F58*114	UU00488	5/8-18	1-1/4	15/16	0.2
H8F58*112	UU00489	5/8-18	1-1/2	15/16	0.2
H8F58*134	UU00490	5/8-18	1-3/4	15/16	0.2
H8F58*2	UU00491	5/8-18	2	15/16	0.2
H8F58*214	UU00492	5/8-18	2-1/4	15/16	0.3
H8F58*212	UU00493	5/8-18	2-1/2	15/16	0.3
H8F58*234	UU00494	5/8-18	2-3/4	15/16	0.3
H8F58*3	UU00495	5/8-18	3	15/16	0.3
H8F58*312	UU00496	5/8-18	3-1/2	15/16	0.4
H8F58*4	UU00497	5/8-18	4	15/16	0.4
H8F58*412	UU00498	5/8-18	4-1/2	15/16	0.5
H8F58*5	UU00499	5/8-18	5	15/16	0.5
H8F58*512	UU00500	5/8-18	5-1/2	15/16	0.6
H8F58*6	UU00501	5/8-18	6	15/16	0.6
H8F58*7	UU00502	5/8-18	7	15/16	0.6
H8F58*8	UU00503	5/8-18	8	15/16	0.7
H8F34*1	UU00504	3/4-16	1	1-1/8	0.2
H8F34*114	UU00505	3/4-16	1-1/4	1-1/8	0.3
H8F34*112	UU00506	3/4-16	1-1/2	1-1/8	0.3
H8F34*134	UU00507	3/4-16	1-3/4	1-1/8	0.3
H8F34*2	UU00508	3/4-16	2	1-1/8	0.3
H8F34*214	UU00509	3/4-16	2-1/4	1-1/8	0.3
H8F34*212	UU00510	3/4-16	2-1/2	1-1/8	0.4
H8F34*234	UU00511	3/4-16	2-3/4	1-1/8	0.4
H8F34*3	UU00512	3/4-16	3	1-1/8	0.5
H8F34*312	UU00513	3/4-16	3-1/2	1-1/8	0.6
H8F34*4	UU00514	3/4-16	4	1-1/8	0.6
H8F34*412	UU00515	3/4-16	4-1/2	1-1/8	0.7
H8F34*5	UU00516	3/4-16	5	1-1/8	0.7
H8F34*512	UU00517	3/4-16	5-1/2	1-1/8	0.8
H8F34*6	UU00518	3/4-16	6	1-1/8	0.9
H8F34*7	UU00519	3/4-16	7	1-1/8	1.1
H8F34*8	UU00520	3/4-16	8	1-1/8	1.2
H8F34*10	UU00521	3/4-16	10	1-1/8	1.3

## Grade 8 Bolts

Yellow Zinc - Fine Thread (Continued)

Order Number	Price Ref. #	Thread (in)	Length (in)	Hex (in)	Wt (lbs)
H8F78*112	UU00522	7/8-14	1-1/2	15/16	0.4
H8F78*2	UU00523	7/8-14	2	15/16	0.5
H8F78*214	UU00524	7/8-14	2-1/4	15/16	0.5
H8F78*212	UU00525	7/8-14	2-1/2	15/16	0.6
H8F78*234	UU00526	7/8-14	2-3/4	15/16	0.6
H8F78*3	UU00527	7/8-14	3	15/16	0.6
H8F78*312	UU00528	7/8-14	3-1/2	15/16	0.7
H8F78*4	UU00529	7/8-14	4	15/16	0.8
H8F78*412	UU00530	7/8-14	4-1/2	15/16	0.9
H8F78*5	UU00531	7/8-14	5	15/16	1.0
H8F78*512	UU00532	7/8-14	5-1/2	15/16	1.1
H8F78*6	UU00533	7/8-14	6	15/16	1.2
H8F78*7	UU00534	7/8-14	7	15/16	1.3
H8F78*8	UU00535	7/8-14	8	15/16	1.5
H8F78*9	UU00536	7/8-14	9	15/16	1.7

Order Number	Price Ref. #	Thread (in)	Length (in)	Hex (in)	Wt (lbs)
H8F1*112	UU00537	1-14	1-1/2	1-1/2	0.5
H8F1*2	UU00538	1-14	2	1-1/2	0.6
H8F1*212	UU00539	1-14	2-1/2	1-1/2	0.8
H8F1*3	UU00540	1-14	3	1-1/2	0.9
H8F1*312	UU00541	1-14	3-1/2	1-1/2	1.0
H8F1*4	UU00542	1-14	4	1-1/2	1.1
H8F1*412	UU00543	1-14	4-1/2	1-1/2	1.2
H8F1*5	UU00544	1-14	5	1-1/2	1.3
H8F1*512	UU00545	1-14	5-1/2	1-1/2	1.4
H8F1*6	UU00546	1-14	6	1-1/2	1.5
H8F1*7	UU00547	1-14	7	1-1/2	1.7
H8F1*8	UU00548	1-14	8	1-1/2	2.0
H8F1*9	UU00549	1-14	9	1-1/2	2.2
H8F1*10	UU00550	1-14	10	1-1/2	2.4

## Hex Bolts

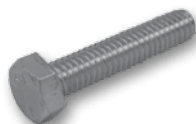
Stainless Steel



Order Number	Price Ref. #	Thread (in)	Length (in)	Wt (lbs)
H14*12S	UU00551	1/4-20	1/2	0.01
H14*34S	UU00552	1/4-20	3/4	0.02
H14*1S	UU00553	1/4-20	1	0.02
H14*114S	UU00554	1/4-20	1-1/4	0.03
H14*112S	UU00555	1/4-20	1-1/2	0.03
H14*134S	UU00556	1/4-20	1-3/4	0.03
H14*2S	UU00557	1/4-20	2	0.03
H14*212S	UU00558	1/4-20	2-1/2	0.04
H14*234S	UU00559	1/4-20	2-3/4	0.04
H14*3S	UU00560	1/4-20	3	0.05
H14*312S	UU00561	1/4-20	3-1/2	0.06
H14*4S	UU00562	1/4-20	4	0.07
H14*412S	UU00563	1/4-20	4-1/2	0.07
H14*5S	UU00564	1/4-20	5	0.08
H14*6S	UU00565	1/4-20	6	0.09
H516*12S	UU00566	5/16-18	1/2	0.02
H516*34S	UU00567	5/16-18	3/4	0.03
H516*1S	UU00568	5/16-18	1	0.03
H516*114S	UU00569	5/16-18	1-1/4	0.04
H516*112S	UU00570	5/16-18	1-1/2	0.04
H516*2S	UU00571	5/16-18	2	0.05
H516*212S	UU00572	5/16-18	2-1/2	0.06
H516*3S	UU00573	5/16-18	3	0.07
H516*312S	UU00574	5/16-18	3-1/2	0.09
H516*4S	UU00575	5/16-18	4	0.09
H516*5S	UU00576	5/16-18	5	0.1
H38*12S	UU00577	3/8-16	1/2	0.03
H38*34S	UU00578	3/8-16	3/4	0.04
H38*1S	UU00579	3/8-16	1	0.04
H38*114S	UU00580	3/8-16	1-1/4	0.05
H38*112S	UU00581	3/8-16	1-1/2	0.06
H38*2S	UU00582	3/8-16	2	0.07
H38*212S	UU00583	3/8-16	2-1/2	0.08
H38*3S	UU00584	3/8-16	3	0.1
H38*312S	UU00585	3/8-16	3-1/2	0.1
H38*334S	UU00586	3/8-16	3-3/4	0.1
H38*4S	UU00587	3/8-16	4	0.1

Order Number	Price Ref. #	Thread (in)	Length (in)	Wt (lbs)
H38*412S	UU00588	3/8-16	4-1/2	0.2
H38*5S	UU00589	3/8-16	5	0.2
H38*512S	UU00590	3/8-16	5-1/2	0.2
H38*6S	UU00591	3/8-16	6	0.2
H38*7S	UU00592	3/8-16	7	0.2
H38*8S	UU00593	3/8-16	8	0.3
H716*1S	UU00594	7/16-14	1	0.06
H716*114S	UU00595	7/16-14	1-1/4	0.07
H716*112S	UU00596	7/16-14	1-1/2	0.08
H716*2S	UU00597	7/16-14	2	0.1
H716*212S	UU00598	7/16-14	2-1/2	0.1
H716*3S	UU00599	7/16-14	3	0.2
H716*312S	UU00600	7/16-14	3-1/2	0.2
H716*4S	UU00601	7/16-14	4	0.2
H716*5S	UU00602	7/16-14	5	0.3
H12*34S	UU00603	1/2-13	3/4	0.07
H12*1S	UU00604	1/2-13	1	0.08
H12*114S	UU00605	1/2-13	1-1/4	0.09
H12*112S	UU00606	1/2-13	1-1/2	0.1
H12*2S	UU00607	1/2-13	2	0.1
H12*212S	UU00608	1/2-13	2-1/2	0.1
H12*3S	UU00609	1/2-13	3	0.2
H12*312S	UU00610	1/2-13	3-1/2	0.2
H12*4S	UU00611	1/2-13	4	0.2
H12*412S	UU00612	1/2-13	4-1/2	0.3
H12*5S	UU00613	1/2-13	5	0.3
H12*6S	UU00614	1/2-13	6	0.4
H58*112S	UU00615	5/8-11	1-1/2	0.2
H58*2S	UU00616	5/8-11	2	0.2
H58*3S	UU00617	5/8-11	3	0.3
H58*312S	UU00618	5/8-11	3-1/2	0.4
H58*5S	UU00619	5/8-11	5	0.5
H58*8S	UU00620	5/8-11	8	0.7
H34*212S	UU00621	3/4-10	2-1/2	0.4
H34*312S	UU00622	3/4-10	3-1/2	0.6
H34*4S	UU00623	3/4-10	4	0.6
H34*5S	UU00624	3/4-10	5	0.7

## Grade 5 - Zinc Plated



• Full thread

Order Number	Price Ref. #	Thread (in)	Length (in)	Wt (lbs)
HTB14*112G5	UU00625	1/4-20	1-1/2	0.3
HTB14*2G5	UU00626	1/4-20	2	0.3
HTB14*3G5	UU00627	1/4-20	3	0.5
HTB14*4G5	UU00628	1/4-20	4	0.6
HTB516*112G5	UU00629	5/16-18	1-1/2	0.4
HTB516*2G5	UU00630	5/16-18	2	0.5
HTB516*212G5	UU00631	5/16-18	2-1/2	0.6
HTB516*3G5	UU00632	5/16-18	3	0.7
HTB38*2G5	UU00633	3/8-16	2	0.7
HTB38*212G5	UU00634	3/8-16	2-1/2	0.9

Order Number	Price Ref. #	Thread (in)	Length (in)	Wt (lbs)
HTB38*3G5	UU00635	3/8-16	3	0.1
HTB38*4G5	UU00636	3/8-16	4	0.1
HTB38*5G5	UU00637	3/8-16	5	0.2
HTB12*2G5	UU00638	1/2-13	2	0.1
HTB12*3G5	UU00639	1/2-13	3	0.2
HTB12*4G5	UU00640	1/2-13	4	0.2
HTB12*5G5	UU00641	1/2-13	5	0.3
HTB58*4G5	UU00642	5/8-11	4	0.4
HTB58*5G5	UU00643	5/8-11	5	0.5

## Flange Bolts

### Grade 5 - Zinc Plated



• Serrated

Order Number	Price Ref. #	Thread (in)	Length (in)	Wt (lbs)
FB14*34G5	UU00644	1/4-20	3/4	0.02
FB14*1G5	UU00645	1/4-20	1	0.02
FB14*112G5	UU00646	1/4-20	1-1/2	0.3
FB14*2G5	UU00647	1/4-20	2	0.3
FB516*34G5	UU00648	5/16-18	3/4	0.03
FB516*1G5	UU00649	5/16-18	1	0.03
FB516*112G5	UU00650	5/16-18	1-1/2	0.4
FB516*2G5	UU00651	5/16-18	2	0.5

Order Number	Price Ref. #	Thread (in)	Length (in)	Wt (lbs)
FB38*34G5	UU00652	3/8-16	3/4	0.04
FB38*1G5	UU00653	3/8-16	1	0.04
FB38*112G8	UU00654	3/8-16	1-1/2	0.06
FB38*112G5	UU00655	3/8-16	1-1/2	0.06
FB38*2G5	UU00656	3/8-16	2	0.7
FB38*212G5	UU00657	3/8-16	2-1/2	0.9
FB12*2G5	UU00658	1/2-13	2	0.1
FB12*212G5	UU00659	1/2-13	2-1/2	0.1

## Socket Head Bolts

### Socket Drive - Plain Steel Course Thread



Order Number	Price Ref. #	Thread (in)	Length (in)	Hex (in)	Wt (lbs)
SCC440*38	UU00660	4-40	3/8	3/32	0.01
SCC540*38	UU00661	5-40	3/8	3/32	0.01
SCC632*14	UU00662	6-32	1/4	7/64	0.01
SCC632*38	UU00663	6-32	3/8	7/64	0.01
SCC632*12	UU00664	6-32	1/2	7/64	0.01
SCC632*34	UU00665	6-32	3/4	7/64	0.01
SCC632*1	UU00666	6-32	1	7/64	0.01
SCC632*114	UU00667	6-32	1-1/4	7/64	0.01
SCC632*112	UU00668	6-32	1-1/2	7/64	0.01
SCC832*14	UU00669	8-32	1/4	9/64	0.01
SCC832*38	UU00670	8-32	3/8	9/64	0.01
SCC832*12	UU00671	8-32	1/2	9/64	0.01
SCC832*34	UU00672	8-32	3/4	9/64	0.01
SCC832*1	UU00673	8-32	1	9/64	0.01
SCC832*114	UU00674	8-32	1-1/4	9/64	0.01
SCC832*112	UU00675	8-32	1-1/2	9/64	0.01
SCC832*2	UU00676	8-32	2	9/64	0.01
SCC1024*14	UU00677	10-24	1/4	5/32	0.01
SCC1024*38	UU00678	10-24	3/8	5/32	0.01
SCC1024*12	UU00679	10-24	1/2	5/32	0.01
SCC1024*34	UU00680	10-24	3/4	5/32	0.01
SCC1024*1	UU00681	10-24	1	5/32	0.01
SCC1024*114	UU00682	10-24	1-1/4	5/32	0.01
SCC1024*112	UU00683	10-24	1-1/2	5/32	0.01
SCC1024*134	UU00684	10-24	1-3/4	5/32	0.01
SCC1024*2	UU00685	10-24	2	5/32	0.02
SCC1024*312	UU00686	10-24	3-1/2	5/32	0.02
SCC14*38	UU00687	1/4-20	3/8	3/16	0.01
SCC14*12	UU00688	1/4-20	1/2	3/16	0.01
SCC14*34	UU00689	1/4-20	3/4	3/16	0.02

Order Number	Price Ref. #	Thread (in)	Length (in)	Hex (in)	Wt (lbs)
SCC14*58	UU00690	1/4-20	5/8	3/16	0.02
SCC14*1	UU00691	1/4-20	1	3/16	0.02
SCC14*114	UU00692	1/4-20	1-1/4	3/16	0.03
SCC14*112	UU00693	1/4-20	1-1/2	3/16	0.03
SCC14*134	UU00694	1/4-20	1-3/4	3/16	0.03
SCC14*2	UU00695	1/4-20	2	3/16	0.03
SCC14*212	UU00696	1/4-20	2-1/2	3/16	0.04
SCC14*3	UU00697	1/4-20	3	3/16	0.05
SCC14*312	UU00698	1/4-20	3-1/2	3/16	0.06
SCC516*12	UU00699	5/16-18	1/2	1/4	0.02
SCC516*58	UU00700	5/16-18	5/8	1/4	0.02
SCC516*34	UU00701	5/16-18	3/4	1/4	0.03
SCC516*1	UU00702	5/16-18	1	1/4	0.03
SCC516*114	UU00703	5/16-18	1-1/4	1/4	0.04
SCC516*112	UU00704	5/16-18	1-1/2	1/4	0.04
SCC516*2	UU00705	5/16-18	2	1/4	0.05
SCC516*212	UU00706	5/16-18	2-1/2	1/4	0.06
SCC516*3	UU00707	5/16-18	3	1/4	0.07
SCC516*314	UU00708	5/16-18	3-1/4	1/4	0.08
SCC516*312	UU00709	5/16-18	3-1/2	1/4	0.09
SCC516*334	UU00710	5/16-18	3-3/4	1/4	0.09
SCC38*12	UU00711	3/8-16	1/2	5/16	0.03
SCC38*34	UU00712	3/8-16	3/4	5/16	0.04
SCC38*1	UU00713	3/8-16	1	5/16	0.04
SCC38*114	UU00714	3/8-16	1-1/4	5/16	0.05
SCC38*112	UU00715	3/8-16	1-1/2	5/16	0.06
SCC38*134	UU00716	3/8-16	1-3/4	5/16	0.07
SCC38*2	UU00717	3/8-16	2	5/16	0.07
SCC38*214	UU00718	3/8-16	2-1/4	5/16	0.08
SCC38*212	UU00719	3/8-16	2-1/2	5/16	0.08

## Socket Head Bolts

Hex Drive - Plain Steel Course Thread (Continued)

Order Number	Price Ref. #	Thread (in)	Length (in)	Hex (in)	Wt (lbs)
SCC38*3	UU00720	3/8-16	3	5/16	0.1
SCC38*312	UU00721	3/8-16	3-1/2	5/16	0.1
SCC38*412	UU00722	3/8-16	4-1/2	5/16	0.2
SCC716*34	UU00723	7/16-14	3/4	3/8	0.05
SCC716*1	UU00724	7/16-14	1	3/8	0.06
SCC716*114	UU00725	7/16-14	1-1/4	3/8	0.07
SCC716*112	UU00726	7/16-14	1-1/2	3/8	0.08
SCC716*2	UU00727	7/16-14	2	3/8	0.1
SCC716*212	UU00728	7/16-14	2-1/2	3/8	0.1
SCC12*12	UU00729	1/2-13	1/2	3/8	0.06
SCC12*34	UU00730	1/2-13	3/4	3/8	0.07
SCC12*1	UU00731	1/2-13	1	3/8	0.08
SCC12*114	UU00732	1/2-13	1-1/4	3/8	0.09
SCC12*112	UU00733	1/2-13	1-1/2	3/8	0.1
SCC12*134	UU00734	1/2-13	1-3/4	3/8	0.1
SCC12*2	UU00735	1/2-13	2	3/8	0.1

Order Number	Price Ref. #	Thread (in)	Length (in)	Hex (in)	Wt (lbs)
SCC12*214	UU00736	1/2-13	2-1/4	3/8	0.1
SCC12*212	UU00737	1/2-13	2-1/2	3/8	0.1
SCC12*3	UU00738	1/2-13	3	3/8	0.2
SCC12*312	UU00739	1/2-13	3-1/2	3/8	0.2
SCC12*4	UU00740	1/2-13	4	3/8	0.2
SCC12*6	UU00741	1/2-13	6	3/8	0.4
SCC58*112	UU00742	5/8-11	1-1/2	1/2	0.2
SCC58*2	UU00743	5/8-11	2	1/2	0.2
SCC58*3	UU00744	5/8-11	3	1/2	0.3
SCC34*2	UU00745	3/4-10	2	5/8	0.3
SCC34*214	UU00746	3/4-10	2-1/4	5/8	0.3
SCC34*3	UU00747	3/4-10	3	5/8	0.5
SCC78*2	UU00748	7/8-9	2	3/4	0.5
SCC1*2	UU00749	1-8	2	3/4	0.7
SCC1*234	UU00750	1-8	2-3/4	3/4	0.9

## Hex Drive - Plain Steel Fine Thread

Order Number	Price Ref. #	Thread (in)	Length (in)	Hex (in)	Wt (lbs)
SCF1032*38	UU00751	10-32	3/8	5/32	0.01
SCF1032*12	UU00752	10-32	1/2	5/32	0.01
SCF1032*34	UU00753	10-32	3/4	5/32	0.01
SCF1032*78	UU00754	10-32	7/8	5/32	0.01
SCF1032*1	UU00755	10-32	1	5/32	0.01
SCF1032*114	UU00756	10-32	1-1/4	5/32	0.01
SCF1032*112	UU00757	10-32	1-1/2	5/32	0.01
SCF1032*2	UU00758	10-32	2	5/32	0.01
SCF14*12	UU00759	1/4-28	1/2	3/16	0.01
SCF14*34	UU00760	1/4-28	3/4	3/16	0.02
SCF14*1	UU00761	1/4-28	1	3/16	0.02
SCF14*114	UU00762	1/4-28	1-1/4	3/16	0.03
SCF14*112	UU00763	1/4-28	1-1/2	3/16	0.03
SCF14*2	UU00764	1/4-28	2	3/16	0.03
SCF14*212	UU00765	1/4-28	2-1/2	3/16	0.04
SCF516*12	UU00766	5/16-24	1/2	1/4	0.02
SCF516*34	UU00767	5/16-24	3/4	1/4	0.03
SCF516*1	UU00768	5/16-24	1	1/4	0.03
SCF516*114	UU00769	5/16-24	1-1/4	1/4	0.04
SCF516*112	UU00770	5/16-24	1-1/2	1/4	0.04
SCF516*2	UU00771	5/16-24	2	1/4	0.05
SCF516*212	UU00772	5/16-24	2-1/2	1/4	0.06

Order Number	Price Ref. #	Thread (in)	Length (in)	Hex (in)	Wt (lbs)
SCF38*12	UU00773	3/8-24	1/2	5/16	0.03
SCF38*34	UU00774	3/8-24	3/4	5/16	0.04
SCF38*1	UU00775	3/8-24	1	5/16	0.04
SCF38*114	UU00776	3/8-24	1-1/4	5/16	0.05
SCF38*112	UU00777	3/8-24	1-1/2	5/16	0.06
SCF38*2	UU00778	3/8-24	2	5/16	0.07
SCF38*212	UU00779	3/8-24	2-1/2	5/16	0.08
SCF716*34	UU00780	7/16-20	3/4	3/8	0.05
SCF716*1	UU00781	7/16-20	1	3/8	0.06
SCF716*114	UU00782	7/16-20	1-1/4	3/8	0.07
SCF716*112	UU00783	7/16-20	1-1/2	3/8	0.08
SCF716*2	UU00784	7/16-20	2	3/8	0.1
SCF716*212	UU00785	7/16-20	2-1/2	3/8	0.1
SCF12*34	UU00786	1/2-20	3/4	3/8	0.07
SCF12*1	UU00787	1/2-20	1	3/8	0.08
SCF12*114	UU00788	1/2-20	1-1/4	3/8	0.09
SCF12*112	UU00789	1/2-20	1-1/2	3/8	0.1
SCF12*2	UU00790	1/2-20	2	3/8	0.1
SCF12*214	UU00791	1/2-20	2-1/4	3/8	0.1
SCF12*212	UU00792	1/2-20	2-1/2	3/8	0.1
SCF58*212	UU00793	5/8-18	2-1/2	1/2	0.3

## Flat Head - Plain Steel Course Thread

Order Number	Price Ref. #	Thread (in)	Length (in)	Hex (in)	Wt (lbs)
SFC440*38	UU00794	4-40	3/8	3/32	0.01
SFC632*12	UU00795	6-32	1/2	7/64	0.01
SFC632*34	UU00796	6-32	3/4	7/64	0.01
SFC632*1	UU00797	6-32	1	7/64	0.01
SFC632*114	UU00798	6-32	1-1/4	7/64	0.01
SFC632*112	UU00799	6-32	1-1/2	7/64	0.01
SFC832*38	UU00800	8-32	3/8	9/64	0.01
SFC832*12	UU00801	8-32	1/2	9/64	0.01
SFC832*34	UU00802	8-32	3/4	9/64	0.01
SFC832*1	UU00803	8-32	1	9/64	0.01
SFC832*114	UU00804	8-32	1-1/4	9/64	0.01
SFC832*112	UU00805	8-32	1-1/2	9/64	0.01
SFC1024*12	UU00806	10-24	1/2	5/32	0.01
SFC1024*34	UU00807	10-24	3/4	5/32	0.01
SFC1024*1	UU00808	10-24	1	5/32	0.01
SFC1024*114	UU00809	10-24	1-1/4	5/32	0.01
SFC1024*112	UU00810	10-24	1-1/2	5/32	0.01
SFC1024*2	UU00811	10-24	2	5/32	0.01
SFC14*12	UU00812	1/4-20	1/2	3/16	0.01
SFC14*34	UU00813	1/4-20	3/4	3/16	0.02
SFC14*1	UU00814	1/4-20	1	3/16	0.02
SFC14*114	UU00815	1/4-20	1-1/4	3/16	0.03
SFC14*112	UU00816	1/4-20	1-1/2	3/16	0.03
SFC14*2	UU00817	1/4-20	2	3/16	0.03
SFC14*212	UU00818	1/4-20	2-1/2	3/16	0.04

Order Number	Price Ref. #	Thread (in)	Length (in)	Hex (in)	Wt (lbs)
SFC516*12	UU00819	5/16-18	1/2	1/4	0.02
SFC516*34	UU00820	5/16-18	3/4	1/4	0.03
SFC516*1	UU00821	5/16-18	1	1/4	0.03
SFC516*114	UU00822	5/16-18	1-1/4	1/4	0.04
SFC516*112	UU00823	5/16-18	1-1/2	1/4	0.04
SFC516*2	UU00824	5/16-18	2	1/4	0.05
SFC516*212	UU00825	5/16-18	2-1/2	1/4	0.06
SFC38*12	UU00826	3/8-16	1/2	5/16	0.03
SFC38*34	UU00827	3/8-16	3/4	5/16	0.04
SFC38*1	UU00828	3/8-16	1	5/16	0.04
SFC38*114	UU00829	3/8-16	1-1/4	5/16	0.05
SFC38*112	UU00830	3/8-16	1-1/2	5/16	0.06
SFC38*2	UU00831	3/8-16	2	5/16	0.07
SFC38*212	UU00832	3/8-16	2-1/2	5/16	0.08
SFC38*3	UU00833	3/8-16	3	5/16	0.09
SFC716*34	UU00834	7/16-14	3/4	3/8	0.05
SFC716*1	UU00835	7/16-14	1	3/8	0.06
SFC716*114	UU00836	7/16-14	1-1/4	3/8	0.07
SFC716*112	UU00837	7/16-14	1-1/2	3/8	0.08
SFC716*2	UU00838	7/16-14	2	3/8	0.1
SFC716*212	UU00839	7/16-14	2-1/2	3/8	0.1
SFC12*34	UU00840	1/2-13	3/4	3/8	0.07
SFC12*1	UU00841	1/2-13	1	3/8	0.08
SFC12*114	UU00842	1/2-13	1-1/4	3/8	0.09
SFC12*112	UU00843	1/2-13	1-1/2	3/8	0.1

## Flat Head - Plain Steel Course Thread (Continued)

Order Number	Price Ref. #	Thread (in)	Length (in)	Hex (in)	Wt (lbs)
SFC12*134	UU00844	1/2-13	1-3/4	3/8	0.1
SFC12*2	UU00845	1/2-13	2	3/8	0.1
SFC12*212	UU00846	1/2-13	2-1/2	3/8	0.1
SFC12*3	UU00847	1/2-13	3	3/8	0.1

Order Number	Price Ref. #	Thread (in)	Length (in)	Hex (in)	Wt (lbs)
SFC58*2	UU00848	5/8-11	2	1/2	0.2
SFC58*212	UU00849	5/8-11	2-1/2	1/2	0.3
SFC34*112	UU00850	3/4-10	1-1/2	5/8	0.3
SFC34*2	UU00851	3/4-10	2	5/8	0.3

## Flat Head - Plain Steel Fine Thread

Order Number	Price Ref. #	Thread (in)	Length (in)	Hex (in)	Wt (lbs)
SFF1032*38	UU00852	10-32	3/8	5/32	0.01
SFF1032*12	UU00853	10-32	1/2	5/32	0.01
SFF1032*34	UU00854	10-32	3/4	5/32	0.01
SFF1032*1	UU00855	10-32	1	5/32	0.01
SFF1032*114	UU00856	10-32	1-1/4	5/32	0.01
SFF1032*112	UU00857	10-32	1-1/2	5/32	0.01
SFF1032*2	UU00858	10-32	2	5/32	0.01
SFF14*12	UU00859	1/4-28	1/2	3/16	0.01
SFF14*34	UU00860	1/4-28	3/4	3/16	0.02
SFF14*1	UU00861	1/4-28	1	3/16	0.02
SFF14*114	UU00862	1/4-28	1-1/4	3/16	0.03
SFF14*112	UU00863	1/4-28	1-1/2	3/16	0.03
SFF14*2	UU00864	1/4-28	2	3/16	0.03
SFF14*212	UU00865	1/4-28	2-1/2	3/16	0.04
SFF516*12	UU00866	5/16-24	1/2	1/4	0.02
SFF516*34	UU00867	5/16-24	3/4	1/4	0.03
SFF516*1	UU00868	5/16-24	1	1/4	0.03
SFF516*114	UU00869	5/16-24	1-1/4	1/4	0.04

Order Number	Price Ref. #	Thread (in)	Length (in)	Hex (in)	Wt (lbs)
SFF516*112	UU00870	5/16-24	1-1/2	1/4	0.04
SFF516*2	UU00871	5/16-24	2	1/4	0.05
SFF516*212	UU00872	5/16-24	2-1/2	1/4	0.06
SFF38*12	UU00873	3/8-24	1/2	5/16	0.03
SFF38*58	UU00874	3/8-24	5/8	5/16	0.03
SFF38*34	UU00875	3/8-24	3/4	5/16	0.04
SFF38*1	UU00876	3/8-24	1	5/16	0.04
SFF38*114	UU00877	3/8-24	1-1/4	5/16	0.05
SFF38*112	UU00878	3/8-24	1-1/2	5/16	0.06
SFF38*2	UU00879	3/8-24	2	5/16	0.07
SFF38*212	UU00880	3/8-24	2-1/2	5/16	0.08
SFF12*34	UU00881	1/2-20	3/4	3/8	0.07
SFF12*1	UU00882	1/2-20	1	3/8	0.08
SFF12*114	UU00883	1/2-20	1-1/4	3/8	0.09
SFF12*112	UU00884	1/2-20	1-1/2	3/8	0.1
SFF12*2	UU00885	1/2-20	2	3/8	0.1
SFF12*212	UU00886	1/2-20	2-1/2	3/8	0.1

## Machine Bolts

### Round Head - Zinc Plated - Combo (Phillips/slotted)



Order Number	Price Ref. #	Thread (in)	Length (in)	Wt (lbs)
MR256*12	UU00887	2-56	1/2	0.01
MR440*12	UU00888	4-40	1/2	0.01
MR440*34	UU00889	4-40	3/4	0.01
MR440*1	UU00890	4-40	1	0.01
MR440*114	UU00891	4-40	1-1/4	0.01
MR440*112	UU00892	4-40	1-1/2	0.01
MR540*12	UU00893	5-40	1/2	0.01
MR540*1	UU00894	5-40	1	0.01
MR540*112	UU00895	5-40	1-1/2	0.01
MR632*14	UU00896	6-32	1/4	0.01
MR632*38	UU00897	6-32	3/8	0.01
MR632*12	UU00898	6-32	1/2	0.01
MR632*58	UU00899	6-32	5/8	0.01
MR632*34	UU00900	6-32	3/4	0.01
MR632*1	UU00901	6-32	1	0.01
MR632*114	UU00902	6-32	1-1/4	0.01
MR632*112	UU00903	6-32	1-1/2	0.01
MR632*134	UU00904	6-32	1-3/4	0.01
MR632*2	UU00905	6-32	2	0.01
MR632*212	UU00906	6-32	2-1/2	0.01
MR632*3	UU00907	6-32	3	0.01
MR632*4	UU00908	6-32	4	0.01
MR832*14	UU00909	8-32	1/4	0.01
MR832*38	UU00910	8-32	3/8	0.01
MR832*12	UU00911	8-32	1/2	0.01
MR832*58	UU00912	8-32	5/8	0.01
MR832*34	UU00913	8-32	3/4	0.01
MR832*1	UU00914	8-32	1	0.01
MR832*114	UU00915	8-32	1-1/4	0.01
MR832*112	UU00916	8-32	1-1/2	0.01
MR832*134	UU00917	8-32	1-3/4	0.01
MR832*2	UU00918	8-32	2	0.01
MR832*212	UU00919	8-32	2-1/2	0.01
MR832*3	UU00920	8-32	3	0.01

Order Number	Price Ref. #	Thread (in)	Length (in)	Wt (lbs)
MR832*4	UU00921	8-32	4	0.01
MR1024*12	UU00922	10-24	1/2	0.01
MR1024*34	UU00923	10-24	3/4	0.01
MR1024*1	UU00924	10-24	1	0.01
MR1024*114	UU00925	10-24	1-1/4	0.01
MR1024*112	UU00926	10-24	1-1/2	0.01
MR1024*2	UU00927	10-24	2	0.01
MR1024*212	UU00928	10-24	2-1/2	0.02
MR1024*3	UU00929	10-24	3	0.02
MR1024*4	UU00930	10-24	4	0.02
MR1024*5	UU00931	10-24	5	0.03
MR1024*6	UU00932	10-24	6	0.03
MR1032*38	UU00933	10-32	3/8	0.01
MR1032*12	UU00934	10-32	1/2	0.01
MR1032*58	UU00935	10-32	5/8	0.01
MR1032*34	UU00936	10-32	3/4	0.01
MR1032*1	UU00937	10-32	1	0.01
MR1032*114	UU00938	10-32	1-1/4	0.01
MR1032*112	UU00939	10-32	1-1/2	0.01
MR1032*134	UU00940	10-32	1-3/4	0.01
MR1032*2	UU00941	10-32	2	0.02
MR1032*212	UU00942	10-32	2-1/2	0.02
MR1032*3	UU00943	10-32	3	0.02
MR1224*12	UU00944	12-24	1/2	0.01
MR1224*34	UU00945	12-24	3/4	0.01
MR1224*1	UU00946	12-24	1	0.01
MR1224*114	UU00947	12-24	1-1/4	0.01
MR1224*112	UU00948	12-24	1-1/2	0.01
MR1224*2	UU00949	12-24	2	0.02
MR1224*212	UU00950	12-24	2-1/2	0.02
MR1224*3	UU00951	12-24	3	0.03
MR14*38	UU00952	1/4-20	3/8	0.01
MR14*12	UU00953	1/4-20	1/2	0.01
MR14*58	UU00954	1/4-20	5/8	0.01

## Machine Bolts

Round Head - Zinc Plated (Continued)

Order Number	Price Ref. #	Thread (in)	Length (in)	Wt (lbs)
MR14*34	UU00955	1/4-20	3/4	0.01
MR14*1	UU00956	1/4-20	1	0.01
MR14*114	UU00957	1/4-20	1-1/4	0.01
MR14*112	UU00958	1/4-20	1-1/2	0.02
MR14*2	UU00959	1/4-20	2	0.02

Order Number	Price Ref. #	Thread (in)	Length (in)	Wt (lbs)
MR14*212	UU00960	1/4-20	2-1/2	0.03
MR14*3	UU00961	1/4-20	3	0.03
MR14*4	UU00962	1/4-20	4	0.04
MR14*5	UU00963	1/4-20	5	0.05
MR14*6	UU00964	1/4-20	6	0.06

## Phillips Round Head - Stainless Steel

MR440*38S	UU00965	4-40	3/8	0.01
MR440*1S	UU00966	4-40	1	0.01
MR440*112S	UU00967	4-40	1-1/2	0.01
MR440*134S	UU00968	4-40	1-3/4	0.01
MR440*2S	UU00969	4-40	2	0.01
MR632*38S	UU00970	6-32	3/8	0.01
MR632*12S	UU00971	6-32	1/2	0.01
MR632*34S	UU00972	6-32	3/4	0.01
MR632*1S	UU00973	6-32	1	0.01
MR632*114S	UU00974	6-32	1-1/4	0.01
MR632*112S	UU00975	6-32	1-1/2	0.01
MR632*2S	UU00976	6-32	2	0.01
MR832*38S	UU00977	8-32	3/8	0.01
MR832*12S	UU00978	8-32	1/2	0.01
MR832*58S	UU00979	8-32	5/8	0.01
MR832*34S	UU00980	8-32	3/4	0.01
MR832*1S	UU00981	8-32	1	0.01
MR832*114S	UU00982	8-32	1-1/4	0.01
MR832*112S	UU00983	8-32	1-1/2	0.01
MR832*2S	UU00984	8-32	2	0.01
MR1024*38S	UU00985	10-24	3/8	0.01
MR1024*12S	UU00986	10-24	1/2	0.01
MR1024*58S	UU00987	10-24	5/8	0.01

MR1024*34S	UU00988	10-24	3/4	0.01
MR1024*1S	UU00989	10-24	1	0.01
MR1024*78S	UU00990	10-24	1	0.01
MR1024*114S	UU00991	10-24	1-1/4	0.01
MR1024*112S	UU00992	10-24	1-1/2	0.01
MR1024*2S	UU00993	10-24	2	0.01
MR1024*212S	UU00994	10-24	2-1/2	0.02
MR1024*234S	UU00995	10-24	2-3/4	0.02
MR1024*4S	UU00996	10-24	4	0.02
MR1032*38S	UU00997	10-32	3/8	0.01
MR1032*12S	UU00998	10-32	1/2	0.01
MR1032*34S	UU00999	10-32	3/4	0.01
MR1032*1S	UU01000	10-32	1	0.01
MR1032*112S	UU01001	10-32	1-1/2	0.01
MR1420*12S	UU01002	1/4-20	1/2	0.01
MR1420*34S	UU01003	1/4-20	3/4	0.01
MR1420*1S	UU01004	1/4-20	1	0.01
MR1420*114S	UU01005	1/4-20	1-1/4	0.01
MR1420*112S	UU01006	1/4-20	1-1/2	0.02
MR1420*2S	UU01007	1/4-20	2	0.03
MR1420*214S	UU01008	1/4-20	2-1/4	0.03
MR516*112S	UU01009	5/16-18	1-1/2	0.01

## Phillips Flat Head - Zinc Plated

MF256*12	UU01010	2-56	1/2	0.01
MF256*78	UU01011	2-56	7/8	0.01
MF440*12	UU01012	4-40	1/2	0.01
MF440*34	UU01013	4-40	3/4	0.01
MF440*1	UU01014	4-40	1	0.01
MF440*114	UU01015	4-40	1-1/4	0.01
MF440*112	UU01016	4-40	1-1/2	0.01
MF632*38	UU01017	6-32	3/8	0.01
MF632*12	UU01018	6-32	1/2	0.01
MF632*58	UU01019	6-32	5/8	0.01
MF632*34	UU01020	6-32	3/4	0.01
MF632*1	UU01021	6-32	1	0.01
MF632*114	UU01022	6-32	1-1/4	0.01
MF632*112	UU01023	6-32	1-1/2	0.01
MF632*134	UU01024	6-32	1-3/4	0.01
MF632*2	UU01025	6-32	2	0.01
MF632*212	UU01026	6-32	2-1/2	0.01
MF632*3	UU01027	6-32	3	0.01
MF832*38	UU01028	8-32	3/8	0.01
MF832*12	UU01029	8-32	1/2	0.01
MF832*34	UU01030	8-32	3/4	0.01
MF832*1	UU01031	8-32	1	0.01
MF832*114	UU01032	8-32	1-1/4	0.01
MF832*112	UU01033	8-32	1-1/2	0.01
MF832*134	UU01034	8-32	1-3/4	0.01
MF832*2	UU01035	8-32	2	0.01
MF832*212	UU01036	8-32	2-1/2	0.01
MF832*3	UU01037	8-32	3	0.01
MF1024*12	UU01038	10-24	1/2	0.01
MF1024*34	UU01039	10-24	3/4	0.01
MF1024*78	UU01040	10-24	7/8	0.01
MF1024*1	UU01041	10-24	1	0.01
MF1024*114	UU01042	10-24	1-1/4	0.01
MF1024*112	UU01043	10-24	1-1/2	0.01

MF1024*2	UU01044	10-24	2	0.01
MF1024*212	UU01045	10-24	2-1/2	0.02
MF1024*3	UU01046	10-24	3	0.02
MF1024*4	UU01047	10-24	4	0.02
MF1032*38	UU01048	10-32	3/8	0.01
MF1032*12	UU01049	10-32	1/2	0.01
MF1032*34	UU01050	10-32	3/4	0.01
MF1032*1	UU01051	10-32	1	0.01
MF1032*114	UU01052	10-32	1-1/4	0.01
MF1032*112	UU01053	10-32	1-1/2	0.01
MF1032*134	UU01054	10-32	1-3/4	0.01
MF1032*2	UU01055	10-32	2	0.01
MF1032*212	UU01056	10-32	2-1/2	0.02
MF1032*3	UU01057	10-32	3	0.02
MF1224*38	UU01058	12-24	3/8	0.01
MF1224*12	UU01059	12-24	1/2	0.01
MF1224*34	UU01060	12-24	3/4	0.01
MF1224*1	UU01061	12-24	1	0.01
MF1224*114	UU01062	12-24	1-1/4	0.01
MF1224*112	UU01063	12-24	1-1/2	0.01
MF1224*2	UU01064	12-24	2	0.02
MF1224*212	UU01065	12-24	2-1/2	0.02
MF1224*3	UU01066	12-24	3	0.03
MF14*38	UU01067	1/4-20	3/8	0.01
MF14*12	UU01068	1/4-20	1/2	0.01
MF14*34	UU01069	1/4-20	3/4	0.01
MF14*1	UU01070	1/4-20	1	0.01
MF14*114	UU01071	1/4-20	1-1/4	0.01
MF14*112	UU01072	1/4-20	1-1/2	0.02
MF14*2	UU01073	1/4-20	2	0.02
MF14*212	UU01074	1/4-20	2-1/2	0.03
MF14*3	UU01075	1/4-20	3	0.03
MF14*312	UU01076	1/4-20	3-1/2	0.04
MF14*4	UU01077	1/4-20	4	0.04
MF14*6	UU01078	1/4-20	6	0.06

## Phillips Flat Head - Stainless Steel

Order Number	Price Ref. #	Thread (in)	Length (in)	Wt (lbs)
MF440*12S	UU01079	4-40	1/2	0.01
MF440*1S	UU01080	4-40	1	0.01
MF632*12S	UU01081	6-32	1/2	0.01
MF632*34S	UU01082	6-32	3/4	0.01
MF632*1S	UU01083	6-32	1	0.01
MF632*112S	UU01084	6-32	1-1/2	0.01
MF632*2S	UU01085	6-32	2	0.01
MF832*12S	UU01086	8-32	1/2	0.01
MF832*34S	UU01087	8-32	3/4	0.01
MF832*1S	UU01088	8-32	1	0.01
MF1024*38S	UU01089	10-24	3/8	0.01
MF1024*12S	UU01090	10-24	1/2	0.01
MF1024*58S	UU01091	10-24	5/8	0.01
MF1024*34S	UU01092	10-24	3/4	0.01
MF1024*1S	UU01093	10-24	1	0.01

Order Number	Price Ref. #	Thread (in)	Length (in)	Wt (lbs)
MF1024*112S	UU01094	10-24	1-1/2	0.01
MF1024*2S	UU01095	10-24	2	0.01
MF1024*212S	UU01096	10-24	2-1/2	0.02
MF1032*34S	UU01097	10-32	3/4	0.01
MF1032*1S	UU01098	10-32	1	0.01
MF1032*112S	UU01099	10-32	1-1/2	0.01
MF14*12S	UU01100	1/4-20	1/2	0.01
MF14*34S	UU01101	1/4-20	3/4	0.01
MF14*1S	UU01102	1/4-20	1	0.01
MF14*114S	UU01103	1/4-20	1-1/4	0.01
MF14*112S	UU01104	1/4-20	1-1/2	0.02
MF14*214S	UU01105	1/4-20	2-1/4	0.03
MF16*2S	UU01106	5/16-18	2	0.02
MF38*212S	UU01107	3/8-16	2-1/2	0.03

## Stove Bolts

### Slotted Round Head - Course Thread



Order Number	Price Ref. #	Thread (in)	Length (in)	Wt (lbs)
SBR516*12	UU01108	5/16-18	1/2	0.03
SBR516*34	UU01109	5/16-18	3/4	0.03
SBR516*1	UU01110	5/16-18	1	0.04
SBR516*114	UU01111	5/16-18	1-1/4	0.04
SBR516*112	UU01112	5/16-18	1-1/2	0.04
SBR516*134	UU01113	5/16-18	1-3/4	0.05
SBR516*2	UU01114	5/16-18	2	0.05
SBR516*212	UU01115	5/16-18	2-1/2	0.06
SBR516*3	UU01116	5/16-18	3	0.07
SBR516*312	UU01117	5/16-18	3-1/2	0.08
SBR516*4	UU01118	5/16-18	4	0.08
SBR38*12	UU01119	3/8-16	1/2	0.05
SBR38*34	UU01120	3/8-16	3/4	0.05
SBR38*1	UU01121	3/8-16	1	0.06
SBR38*114	UU01122	3/8-16	1-1/4	0.06
SBR38*112	UU01123	3/8-16	1-1/2	0.07

Order Number	Price Ref. #	Thread (in)	Length (in)	Wt (lbs)
SBR38*134	UU01124	3/8-16	1-3/4	0.07
SBR38*2	UU01125	3/8-16	2	0.08
SBR38*212	UU01126	3/8-16	2-1/2	0.09
SBR38*3	UU01127	3/8-16	3	0.1
SBR38*312	UU01128	3/8-16	3-1/2	0.1
SBR38*4	UU01129	3/8-16	4	0.1
SBR38*5	UU01130	3/8-16	5	0.2
SBR38*6	UU01131	3/8-16	6	0.2
SBR716*1	UU01132	7/16-14	1	0.08
SBR716*2	UU01133	7/16-14	2	0.1
SBR12*1	UU01134	1/2-13	1	0.1
SBR12*114	UU01135	1/2-13	1-1/4	0.1
SBR12*112	UU01136	1/2-13	1-1/2	0.1
SBR12*2	UU01137	1/2-13	2	0.2
SBR12*212	UU01138	1/2-13	2-1/2	0.2
SBR12*3	UU01139	1/2-13	3	0.2
SBR12*4	UU01140	1/2-13	4	0.3

### Slotted Flat Head - Course Thread

Order Number	Price Ref. #	Thread (in)	Length (in)	Wt (lbs)
SBF516*12	UU01141	5/16-18	1/2	0.03
SBF516*34	UU01142	5/16-18	3/4	0.03
SBF516*1	UU01143	5/16-18	1	0.04
SBF516*114	UU01144	5/16-18	1-1/4	0.04
SBF516*112	UU01145	5/16-18	1-1/2	0.04
SBF516*134	UU01146	5/16-18	1-3/4	0.05
SBF516*2	UU01147	5/16-18	2	0.05
SBF516*212	UU01148	5/16-18	2-1/2	0.06
SBF516*3	UU01149	5/16-18	3	0.07
SBF516*312	UU01150	5/16-18	3-1/2	0.08
SBF516*4	UU01151	5/16-18	4	0.08
SBF38*12	UU01152	3/8-16	1/2	0.05
SBF38*34	UU01153	3/8-16	3/4	0.05
SBF38*1	UU01154	3/8-16	1	0.06
SBF38*114	UU01155	3/8-16	1-1/4	0.06
SBF38*112	UU01156	3/8-16	1-1/2	0.07

Order Number	Price Ref. #	Thread (in)	Length (in)	Wt (lbs)
SBF38*134	UU01157	3/8-16	1-3/4	0.07
SBF38*2	UU01158	3/8-16	2	0.08
SBF38*212	UU01159	3/8-16	2-1/2	0.09
SBF38*3	UU01160	3/8-16	3	0.1
SBF38*312	UU01161	3/8-16	3-1/2	0.1
SBF38*4	UU01162	3/8-16	4	0.1
SBF38*5	UU01163	3/8-16	5	0.2
SBF38*6	UU01164	3/8-16	6	0.2
SBF12*1	UU01165	1/2-13	1	0.1
SBF12*114	UU01166	1/2-13	1-1/4	0.1
SBF12*112	UU01167	1/2-13	1-1/2	0.1
SBF12*2	UU01168	1/2-13	2	0.2
SBF12*212	UU01169	1/2-13	2-1/2	0.2
SBF12*3	UU01170	1/2-13	3	0.2
SBF12*312	UU01171	1/2-13	3-1/2	0.3
SBF12*4	UU01172	1/2-13	4	0.3
SBF12*5	UU01173	1/2-13	5	0.4

## Stove Bolts

Truss Bolts - Course Thread



Order Number	Price Ref. #	Thread (in)	Length (in)	Wt (lbs)
SBT832*118	UU01174	8-32	1-1/8	0.01
SBT832*134	UU01175	8-32	1-3/4	0.01
SBT316*12	UU01176	3/16-24	1/2	0.01
SBT316*34	UU01177	3/16-24	3/4	0.01
SBT316*1	UU01178	3/16-24	1	0.01
SBT316*114	UU01179	3/16-24	1-1/4	0.01
SBT316*112	UU01180	3/16-24	1-1/2	0.01
SBT316*134	UU01181	3/16-24	1-3/4	0.01
SBT316*2	UU01182	3/16-24	2	0.02
SBT316*212	UU01183	3/16-24	2-1/2	0.03
SBT316*3	UU01184	3/16-24	3	0.04
SBT316*312	UU01185	3/16-24	3-1/2	0.05
SBT316*4	UU01186	3/16-24	4	0.05
SBT316*412	UU01187	3/16-24	4-1/2	0.06
SBT316*5	UU01188	3/16-24	5	0.06
SBT316*6	UU01189	3/16-24	6	0.08
SBT14*12	UU01190	1/4-20	1/2	0.01
SBT14*34	UU01191	1/4-20	3/4	0.02
SBT14*1	UU01192	1/4-20	1	0.02
SBT14*114	UU01193	1/4-20	1-1/4	0.03

Order Number	Price Ref. #	Thread (in)	Length (in)	Wt (lbs)
SBT14*112	UU01194	1/4-20	1-1/2	0.03
SBT14*134	UU01195	1/4-20	1-3/4	0.03
SBT14*2	UU01196	1/4-20	2	0.03
SBT14*212	UU01197	1/4-20	2-1/2	0.04
SBT14*3	UU01198	1/4-20	3	0.05
SBT14*312	UU01199	1/4-20	3-1/2	0.06
SBT14*4	UU01200	1/4-20	4	0.06
SBT14*412	UU01201	1/4-20	4-1/2	0.07
SBT14*5	UU01202	1/4-20	5	0.07
SBT14*6	UU01203	1/4-20	6	0.09
SBT516*12	UU01204	5/16-18	1/2	0.02
SBT516*34	UU01205	5/16-18	3/4	0.02
SBT516*1	UU01206	5/16-18	1	0.03
SBT516*114	UU01207	5/16-18	1-1/4	0.04
SBT516*4	UU01208	5/16-18	4	0.09
SBT38*1	UU01209	3/8-16	1	0.04
SBT38*114	UU01210	3/8-16	1-1/4	0.05
SBT38*212	UU01211	3/8-16	2-1/2	0.08
SBT38*4	UU01212	3/8-16	4	0.1
SBT12*212	UU01213	1/2-13	2-1/2	0.1
SBT12*3	UU01214	1/2-13	3	0.2

## Carriage Bolts

Zinc Plated Grade 2



Order Number	Price Ref. #	Thread (in)	Length (in)	Wt (lbs)
CB316*12	UU01215	3/16-24	1/2	0.01
CB316*1	UU01216	3/16-24	1	0.01
CB316*112	UU01217	3/16-24	1-1/2	0.01
CB316*2	UU01218	3/16-24	2	0.02
CB14*12	UU01219	1/4-20	1/2	0.01
CB14*34	UU01220	1/4-20	3/4	0.02
CB14*1	UU01221	1/4-20	1	0.02
CB14*114	UU01222	1/4-20	1-1/4	0.03
CB14*112	UU01223	1/4-20	1-1/2	0.03
CB14*2	UU01224	1/4-20	2	0.03
CB14*214	UU01225	1/4-20	2-1/4	0.04
CB14*212	UU01226	1/4-20	2-1/2	0.04
CB14*234	UU01227	1/4-20	2-3/4	0.05
CB14*3	UU01228	1/4-20	3	0.05
CB14*312	UU01229	1/4-20	3-1/2	0.06
CB14*334	UU01230	1/4-20	3-3/4	0.06
CB14*4	UU01231	1/4-20	4	0.06
CB14*412	UU01232	1/4-20	4-1/2	0.07
CB14*5	UU01233	1/4-20	5	0.07
CB14*512	UU01234	1/4-20	5-1/2	0.08
CB14*6	UU01235	1/4-20	6	0.09
CB14*7	UU01236	1/4-20	7	0.09
CB516*12	UU01237	5/16-18	1/2	0.02
CB516*34	UU01238	5/16-18	3/4	0.03
CB516*1	UU01239	5/16-18	1	0.03
CB516*114	UU01240	5/16-18	1-1/4	0.04
CB516*112	UU01241	5/16-18	1-1/2	0.04
CB516*134	UU01242	5/16-18	1-3/4	0.05
CB516*2	UU01243	5/16-18	2	0.05
CB516*214	UU01244	5/16-18	2-1/4	0.06
CB516*212	UU01245	5/16-18	2-1/2	0.06
CB516*3	UU01246	5/16-18	3	0.07
CB516*312	UU01247	5/16-18	3-1/2	0.09
CB516*4	UU01248	5/16-18	4	0.09
CB516*412	UU01249	5/16-18	4-1/2	0.1
CB516*5	UU01250	5/16-18	5	0.1
CB516*512	UU01251	5/16-18	5-1/2	0.1
CB516*6	UU01252	5/16-18	6	0.1

Order Number	Price Ref. #	Thread (in)	Length (in)	Wt (lbs)
CB516*612	UU01253	5/16-18	6-1/2	0.1
CB516*7	UU01254	5/16-18	7	0.1
CB516*8	UU01255	5/16-18	8	0.1
CB38*34	UU01256	3/8-16	3/4	0.04
CB38*1	UU01257	3/8-16	1	0.04
CB38*114	UU01258	3/8-16	1-1/4	0.05
CB38*112	UU01259	3/8-16	1-1/2	0.06
CB38*2	UU01260	3/8-16	2	0.07
CB38*214	UU01261	3/8-16	2-1/4	0.08
CB38*212	UU01262	3/8-16	2-1/2	0.08
CB38*3	UU01263	3/8-16	3	0.1
CB38*312	UU01264	3/8-16	3-1/2	0.1
CB38*4	UU01265	3/8-16	4	0.1
CB38*412	UU01266	3/8-16	4-1/2	0.2
CB38*5	UU01267	3/8-16	5	0.2
CB38*512	UU01268	3/8-16	5-1/2	0.2
CB38*6	UU01269	3/8-16	6	0.2
CB38*612	UU01270	3/8-16	6-1/2	0.2
CB38*7	UU01271	3/8-16	7	0.2
CB38*8	UU01272	3/8-16	8	0.3
CB38*9	UU01273	3/8-16	9	0.3
CB38*10	UU01274	3/8-16	10	0.3
CB38*11	UU01275	3/8-16	11	0.4
CB38*12	UU01276	3/8-16	12	0.4
CB716*1	UU01277	7/16-14	1	0.06
CB716*114	UU01278	7/16-14	1-1/4	0.07
CB716*112	UU01279	7/16-14	1-1/2	0.08
CB716*2	UU01280	7/16-14	2	0.1
CB716*212	UU01281	7/16-14	2-1/2	0.1
CB716*3	UU01282	7/16-14	3	0.2
CB716*312	UU01283	7/16-14	3-1/2	0.2
CB716*4	UU01284	7/16-14	4	0.2
CB716*412	UU01285	7/16-14	4-1/2	0.2
CB716*5	UU01286	7/16-14	5	0.3
CB716*512	UU01287	7/16-14	5-1/2	0.3
CB716*6	UU01288	7/16-14	6	0.3
CB12*1	UU01289	1/2-13	1	0.08
CB12*114	UU01290	1/2-13	1-1/4	0.09

## Zinc Plated Grade 2 (Continued)

Order Number	Price Ref. #	Thread (in)	Length (in)	Wt (lbs)
CB12*112	UU01291	1/2-13	1-1/2	0.1
CB12*2	UU01292	1/2-13	2	0.1
CB12*214	UU01293	1/2-13	2-1/4	0.1
CB12*212	UU01294	1/2-13	2-1/2	0.1
CB12*234	UU01295	1/2-13	2-3/4	0.2
CB12*3	UU01296	1/2-13	3	0.2
CB12*312	UU01297	1/2-13	3-1/2	0.2
CB12*4	UU01298	1/2-13	4	0.2
CB12*412	UU01299	1/2-13	4-1/2	0.3
CB12*5	UU01300	1/2-13	5	0.3
CB12*512	UU01301	1/2-13	5-1/2	0.3
CB12*6	UU01302	1/2-13	6	0.4
CB12*612	UU01303	1/2-13	6-1/2	0.4
CB12*7	UU01304	1/2-13	7	0.4
CB12*8	UU01305	1/2-13	8	0.5
CB12*9	UU01306	1/2-13	9	0.6
CB12*10	UU01307	1/2-13	10	0.6
CB12*11	UU01308	1/2-13	11	0.7
CB12*12	UU01309	1/2-13	12	0.8
CB12*14	UU01310	1/2-13	14	0.9
CB58*112	UU01311	5/8-11	1-1/2	0.2
CB58*2	UU01312	5/8-11	2	0.2
CB58*212	UU01313	5/8-11	2-1/2	0.3
CB58*3	UU01314	5/8-11	3	0.3

## Grade 5 Zinc Plated

CB14*3G5	UU01338	1/4-20	3	0.05
CB516*4G5	UU01339	5/16-18	4	0.09
CB38*1G5	UU01340	3/8-16	1	0.04
CB38*114G5	UU01341	3/8-16	1-1/4	0.05
CB38*3G5	UU01342	3/8-16	3	0.1
CB12*2G5	UU01343	1/2-13	2	0.1
CB12*214G5	UU01344	1/2-13	2-1/4	0.1
CB12*3G5	UU01345	1/2-13	3	0.2

## Galvanized Grade 2

CB14*1G	UU03049	1/4-20	1	0.1
CB14*112G	UU03050	1/4-20	1-1/2	0.1
CB14*2G	UU03051	1/4-20	2	0.1
CB14*212G	UU03052	1/4-20	2-1/2	0.1
CB14*3G	UU03053	1/4-20	3	0.1
CB14*4G	UU03054	1/4-20	4	0.1
CB14*5G	UU03055	1/4-20	5	0.1
CB14*6G	UU03056	1/4-20	6	0.1
CB14*7G	UU03057	1/4-20	7	0.1
CB14*8G	UU03058	1/4-20	8	0.1
CB516*1G	UU03059	5/16-18	1	0.1
CB516*112G	UU03060	5/16-18	1-1/2	0.1
CB516*2G	UU03061	5/16-18	2	0.1
CB516*212G	UU03062	5/16-18	2-1/2	0.1
CB516*3G	UU03063	5/16-18	3	0.1
CB516*4G	UU03064	5/16-18	4	0.1
CB516*5G	UU03065	5/16-18	5	0.1
CB516*6G	UU03066	5/16-18	6	0.2
CB516*7G	UU03067	5/16-18	7	0.2
CB516*8G	UU03068	5/16-18	8	0.2
CB38*2G	UU03069	3/8-16	2	0.1
CB38*3G	UU03070	3/8-16	3	0.1
CB38*4G	UU01355	3/8-16	4	0.1
CB38*5G	UU01356	3/8-16	5	0.2
CB38*6G	UU01358	3/8-16	6	0.2

Order Number	Price Ref. #	Thread (in)	Length (in)	Wt (lbs)
CB58*312	UU01315	5/8-11	3-1/2	0.4
CB58*4	UU01316	5/8-11	4	0.4
CB58*412	UU01317	5/8-11	4-1/2	0.5
CB58*5	UU01318	5/8-11	5	0.5
CB58*512	UU01319	5/8-11	5-1/2	0.6
CB58*6	UU01320	5/8-11	6	0.6
CB58*612	UU01321	5/8-11	6-1/2	0.6
CB58*7	UU01322	5/8-11	7	0.6
CB58*8	UU01323	5/8-11	8	0.7
CB58*9	UU01324	5/8-11	9	0.8
CB58*10	UU01325	5/8-11	10	0.9
CB58*11	UU01326	5/8-11	11	1.0
CB58*12	UU01327	5/8-11	12	1.1
CB34*2	UU01328	3/4-10	2	0.3
CB34*212	UU01329	3/4-10	2-1/2	0.4
CB34*3	UU01330	3/4-10	3	0.5
CB34*4	UU01331	3/4-10	4	0.6
CB34*5	UU01332	3/4-10	5	0.7
CB34*512	UU01333	3/4-10	5-1/2	0.8
CB34*6	UU01334	3/4-10	6	0.8
CB34*7	UU01335	3/4-10	7	0.9
CB34*8	UU01336	3/4-10	8	1.1
CB34*10	UU01337	3/4-10	10	1.3

CB12*412G5	UU01346	1/2-13	4-1/2	0.3
CB12*5G5	UU01347	1/2-13	5	0.3
CB58*212G5	UU01348	5/8-11	2-1/2	0.3
CB58*3G5	UU01349	5/8-11	3	0.3
CB58*4G5	UU01350	5/8-11	4	0.4
CB58*412G5	UU01351	5/8-11	4-1/2	0.5
CB58*5G5	UU01352	5/8-11	5	0.5
CB58*6G5	UU01353	5/8-11	6	0.6
CB34*412G5	UU01354	3/4-10	4-1/2	0.7

CB38*7G	UU01359	3/8-16	7	0.2
CB38*8G	UU01360	3/8-16	8	0.3
CB38*10G	UU01361	3/8-16	10	0.3
CB38*12G	UU01362	3/8-16	12	0.4
CB12*2G	UU03071	1/2-13	2	0.3
CB12*3G	UU01364	1/2-13	3	0.2
CB12*4G	UU01365	1/2-13	4	0.2
CB12*5G	UU01367	1/2-13	5	0.3
CB12*6G	UU01369	1/2-13	6	0.4
CB12*7G	UU01370	1/2-13	7	0.4
CB12*8G	UU01371	1/2-13	8	0.5
CB12*9G	UU01372	1/2-13	9	0.6
CB12*10G	UU01373	1/2-13	10	0.6
CB12*12G	UU01374	1/2-13	12	0.8
CB12*14G	UU03072	1/2-13	14	0.7
CB12*16G	UU03073	1/2-13	16	0.8
CB58*6G	UU03074	5/8-11	6	0.5
CB58*8G	UU03075	5/8-11	8	0.7
CB58*10G	UU03076	5/8-11	10	0.8
CB58*12G	UU03077	5/8-11	12	1.0
CB34*6G	UU03078	3/4-10	6	0.8
CB34*8G	UU03079	3/4-10	8	1.0
CB34*10G	UU03080	3/4-10	10	1.2
CB34*12G	UU03081	3/4-10	12	1.4

## Carriage Bolts

Stainless Steel

Order Number	Price Ref. #	Thread (in)	Length (in)	Wt (lbs)
CB14*34S	UU01375	1/4-20	3/4	0.02
CB14*1S	UU01376	1/4-20	1	0.02
CB14*114S	UU01377	1/4-20	1-1/4	0.03
CB14*112S	UU01378	1/4-20	1-1/2	0.03
CB14*134S	UU01379	1/4-20	1-3/4	0.03
CB14*2S	UU01380	1/4-20	2	0.03
CB14*214S	UU01381	1/4-20	2-1/4	0.04
CB14*212S	UU01382	1/4-20	2-1/2	0.04
CB14*3S	UU01383	1/4-20	3	0.05
CB14*312S	UU01384	1/4-20	3-1/2	0.06
CB14*4S	UU01385	1/4-20	4	0.06
CB516*34S	UU01386	5/16-18	3/4	0.03
CB516*1S	UU01387	5/16-18	1	0.03
CB516*114S	UU01388	5/16-18	1-1/4	0.04
CB516*112S	UU01389	5/16-18	1-1/2	0.04
CB516*134S	UU01390	5/16-18	1-3/4	0.05
CB516*2S	UU01391	5/16-18	2	0.05
CB516*212S	UU01392	5/16-18	2-1/2	0.06
CB516*3S	UU01393	5/16-18	3	0.07
CB516*312S	UU01394	5/16-18	3-1/2	0.09
CB516*4S	UU01395	5/16-18	4	0.09
CB516*6S	UU01396	5/16-18	6	0.1
CB38*34S	UU01397	3/8-16	3/4	0.04
CB38*1S	UU01398	3/8-16	1	0.04

Order Number	Price Ref. #	Thread (in)	Length (in)	Wt (lbs)
CB38*114S	UU01399	3/8-16	1-1/4	0.05
CB38*112S	UU01400	3/8-16	1-1/2	0.06
CB38*134S	UU01401	3/8-16	1-3/4	0.07
CB38*2S	UU01402	3/8-16	2	0.07
CB38*212S	UU01403	3/8-16	2-1/2	0.08
CB38*3S	UU01404	3/8-16	3	0.1
CB38*312S	UU01405	3/8-16	3-1/2	0.1
CB38*4S	UU01406	3/8-16	4	0.1
CB38*412S	UU01407	3/8-16	4-1/2	0.2
CB38*5S	UU01408	3/8-16	5	0.2
CB38*512S	UU01409	3/8-16	5-1/2	0.2
CB38*6S	UU01410	3/8-16	6	0.2
CB38*8S	UU01411	3/8-16	8	0.3
CB12*1S	UU01412	1/2-13	1	0.08
CB12*112S	UU01413	1/2-13	1-1/2	0.1
CB12*2S	UU01414	1/2-13	2	0.1
CB12*212S	UU01415	1/2-13	2-1/2	0.1
CB12*3S	UU01416	1/2-13	3	0.2
CB12*312S	UU01417	1/2-13	3-1/2	0.2
CB12*4S	UU01418	1/2-13	4	0.2
CB12*5S	UU01419	1/2-13	5	0.3

## Self-tapping Bolts

Hex Washer Head

Order Number	Price Ref. #	Thread (in)	Length (in)	Hex (in)	Wt (lbs)
TF1024*34	UU01420	10-24	3/4	3/8	0.01
TF1024*114	UU01421	10-24	1-1/4	3/8	0.01
TF14*34	UU01422	1/4-20	3/4	7/16	0.02
TF14*1	UU01423	1/4-20	1	7/16	0.02
TF14*114	UU01424	1/4-20	1-1/4	7/16	0.03
TF14*112	UU01425	1/4-20	1-1/2	7/16	0.03
TF14*2	UU01426	1/4-20	2	7/16	0.03



Order Number	Price Ref. #	Thread (in)	Length (in)	Hex (in)	Wt (lbs)
TF516*34	UU01427	5/16-18	3/4	1/2	0.03
TF516*1	UU01428	5/16-18	1	1/2	0.03
TF516*114	UU01429	5/16-18	1-1/4	1/2	0.04
TF38*34	UU01430	3/8-16	3/4	9/16	0.04
TF38*1	UU01431	3/8-16	1	9/16	0.04
TF38*114	UU01432	3/8-16	1-1/4	9/16	0.05
TF38*112	UU01433	3/8-16	1-1/2	9/16	0.06

Flat Head Torx Drive

Order Number	Price Ref. #	Thread (in)	Length (in)	Hex (in)	Wt (lbs)
FTF14*1	UU01434	1/4-20	1	7/16	0.02
FTF14*114	UU01435	1/4-20	1-1/4	7/16	0.03
FTF14*112	UU01436	1/4-20	1-1/2	7/16	0.03
FTF14*134	UU01437	1/4-20	1-3/4	7/16	0.03

Order Number	Price Ref. #	Thread (in)	Length (in)	Hex (in)	Wt (lbs)
FTF14*2	UU01438	1/4-20	2	7/16	0.03
FTF14*212	UU01439	1/4-20	2-1/2	7/16	0.04
FTF14*3	UU01440	1/4-20	3	7/16	0.05
FTF516*2	UU01441	5/16-18	2	1/2	0.05
FTF516*212	UU01442	5/16-18	2-1/2	1/2	0.06

## Elevator Bolts

Order Number	Price Ref. #	Thread (in)	Length (in)	Wt (lbs)
EB14*34	UU01443	1/4-18	3/4	0.02
EB14*1	UU01444	1/4-20	1	0.02
EB14*112	UU01445	1/4-19	1-1/2	0.03
EB516*1	UU01446	5/16-18	1	0.03
EB516*112	UU01447	5/16-17	1-1/2	0.04



Order Number	Price Ref. #	Thread (in)	Length (in)	Wt (lbs)
EB516*2	UU01448	5/16-16	2	0.05
EB516*212	UU01449	5/16-15	2-1/2	0.06
EB38*112	UU01450	3/8-16	1-1/2	0.06
EB38*2	UU01451	3/8-15	2	0.07
EB38*212	UU01452	3/8-14	2-1/2	0.08

## Square Head Bolts



Order Number	Price Ref. #	Thread (in)	Length (in)	Wt (lbs)
SHB14*112	UU01453	1/4-20	1-1/2	0.03
SHB14*2	UU01454	1/4-20	2	0.03
SHB14*212	UU01455	1/4-20	2-1/2	0.04
SHB14*3	UU01456	1/4-20	3	0.05
SHB516*112	UU01457	5/16-18	1-1/2	0.04
SHB516*2	UU01458	5/16-18	2	0.05
SHB516*212	UU01459	5/16-18	2-1/2	0.06
SHB516*3	UU01460	5/16-18	3	0.07
SHB516*4	UU01461	5/16-18	4	0.09
SHB38*112	UU01462	3/8-16	1-1/2	0.06
SHB38*2	UU01463	3/8-16	2	0.07
SHB38*212	UU01464	3/8-16	2-1/2	0.08
SHB38*3	UU01465	3/8-16	3	0.1
SHB38*4	UU01466	3/8-16	4	0.1
SHB12*112	UU01467	1/2-13	1-1/2	0.1

Order Number	Price Ref. #	Thread (in)	Length (in)	Wt (lbs)
SHB12*2	UU01468	1/2-13	2	0.1
SHB12*212	UU01469	1/2-13	2-1/2	0.1
SHB12*3	UU01470	1/2-13	3	0.2
SHB12*312	UU01471	1/2-13	3-1/2	0.2
SHB12*4	UU01472	1/2-13	4	0.2
SHB12*412	UU01473	1/2-13	4-1/2	0.3
SHB12*6	UU01474	1/2-13	6	0.4
SHB58*212	UU01475	5/8-11	2-1/2	0.3
SHB58*3	UU01476	5/8-11	3	0.3
SHB58*312	UU01477	5/8-11	3-1/2	0.4
SHB58*412	UU01478	5/8-11	4-1/2	0.5
SHB58*5	UU01479	5/8-11	5	0.5
SHB34*4	UU01480	3/4-10	4	0.6
SHB34*512	UU01481	3/4-10	5-1/2	0.8

## Thumb Screws

Zinc Plated



Order Number	Price Ref. #	Thread (in)	Length (in)	Wt (lbs)
TS632*12	UU01482	6-32	1/2	0.01
TS832*12	UU01483	8-32	1/2	0.01
TS832*34	UU01484	8-32	3/4	0.01
TS832*1	UU01485	8-32	1	0.01
TS1024*12	UU01486	10-24	1/2	0.01
TS1024*34	UU01487	10-24	3/4	0.01
TS1024*1	UU01488	10-24	1	0.01
TS1024*112	UU01489	10-24	1-1/2	0.01
TS1032*12	UU01490	10-32	1/2	0.01
TS1032*34	UU01491	10-32	3/4	0.01
TS1032*1	UU01492	10-32	1	0.01
TS1032*112	UU01493	10-32	1-1/2	0.01
TS1032*2	UU01494	10-32	2	0.01
TS14*12	UU01495	1/4-20	1/2	0.01
TS14*34	UU01496	1/4-20	3/4	0.02
TS14*1	UU01497	1/4-20	1	0.02

Order Number	Price Ref. #	Thread (in)	Length (in)	Wt (lbs)
TS14*114	UU01498	1/4-20	1-1/4	0.03
TS14*112	UU01499	1/4-20	1-1/2	0.03
TS14*2	UU01500	1/4-20	2	0.03
TS14*212	UU01501	1/4-20	2-1/2	0.04
TS516*34	UU01502	5/16-18	3/4	0.03
TS516*1	UU01503	5/16-18	1	0.03
TS516*114	UU01504	5/16-18	1-1/4	0.04
TS516*112	UU01505	5/16-18	1-1/2	0.04
TS516*2	UU01506	5/16-18	2	0.05
TS38*34	UU01507	3/8-16	3/4	0.04
TS38*1	UU01508	3/8-16	1	0.04
TS38*114	UU01509	3/8-16	1-1/4	0.05
TS38*112	UU01510	3/8-16	1-1/2	0.06
TS38*2	UU01511	3/8-16	2	0.07
TS38*212	UU01512	3/8-16	2-1/2	0.08
TS38*3	UU01513	3/8-16	3	0.1

## Allen Head Set Screws

Plain Steel - Course Thread



• Cup point set screws

Order Number	Price Ref. #	Thread (in)	Length (in)	Wt (lbs)
SSC440*18	UU01514	4-40	1/8	0.01
SSC440*14	UU01515	4-40	1/4	0.01
SSC440*12	UU01516	4-40	1/2	0.01
SSC440*58	UU01517	4-40	5/8	0.01
SSC632*316	UU01518	6-32	3/16	0.01
SSC632*14	UU01519	6-32	1/4	0.01
SSC632*516	UU01520	6-32	5/16	0.01
SSC632*38	UU01521	6-32	3/8	0.01
SSC632*12	UU01522	6-32	1/2	0.01
SSC832*316	UU01523	8-32	3/16	0.01
SSC832*14	UU01524	8-32	1/4	0.01
SSC832*516	UU01525	8-32	5/16	0.01
SSC832*38	UU01526	8-32	3/8	0.01
SSC832*12	UU01527	8-32	1/2	0.01
SSC1024*316	UU01528	10-24	3/16	0.01
SSC1024*14	UU01529	10-24	1/4	0.01

Order Number	Price Ref. #	Thread (in)	Length (in)	Wt (lbs)
SSC1024*516	UU01530	10-24	5/16	0.01
SSC1024*38	UU01531	10-24	3/8	0.01
SSC1024*34	UU01532	10-24	3/4	0.01
SSC1024*1	UU01533	10-24	1	0.01
SSC14*316	UU01534	1/4-20	3/16	0.01
SSC14*14	UU01535	1/4-20	1/4	0.01
SSC14*516	UU01536	1/4-20	5/16	0.01
SSC14*38	UU01537	1/4-20	3/8	0.01
SSC14*12	UU01538	1/4-20	1/2	0.01
SSC14*58	UU01539	1/4-20	5/8	0.01
SSC14*34	UU01540	1/4-20	3/4	0.01
SSC14*1	UU01541	1/4-20	1	0.01
SSC14*114	UU01542	1/4-20	1-1/4	0.01
SSC516*14	UU01543	5/16-18	1/4	0.01
SSC516*516	UU01544	5/16-18	5/16	0.01
SSC516*38	UU01545	5/16-18	3/8	0.01

## Allen Head Set Screws

Plain Steel - Course Thread (Continued)

Order Number	Price Ref. #	Thread (in)	Length (in)	Wt (lbs)
SSC516*12	UU01546	5/16-18	1/2	0.01
SSC516*58	UU01547	5/16-18	5/8	0.01
SSC516*34	UU01548	5/16-18	3/4	0.01
SSC516*1	UU01549	5/16-18	1	0.01
SSC516*114	UU01550	5/16-18	1-1/4	0.02
SSC516*112	UU01551	5/16-18	1-1/2	0.02
SSC38*14	UU01552	3/8-10	1/4	0.01
SSC38*516	UU01553	3/8-10	5/16	0.01
SSC38*38	UU01554	3/8-10	3/8	0.01
SSC38*12	UU01555	3/8-10	1/2	0.01
SSC38*58	UU01556	3/8-10	5/8	0.02
SSC38*34	UU01557	3/8-10	3/4	0.03
SSC38*78	UU01558	3/8-10	7/8	0.03
SSC38*1	UU01559	3/8-10	1	0.04
SSC38*114	UU01560	3/8-10	1-1/4	0.05
SSC38*112	UU01561	3/8-10	1-1/2	0.06
SSC716*38	UU01562	7/16-14	3/8	0.01
SSC716*12	UU01563	7/16-14	1/2	0.01

Order Number	Price Ref. #	Thread (in)	Length (in)	Wt (lbs)
SSC716*34	UU01564	7/16-14	3/4	0.01
SSC716*1	UU01565	7/16-14	1	0.02
SSC12*38	UU01566	1/2-13	3/8	0.02
SSC12*12	UU01567	1/2-13	1/2	0.02
SSC12*58	UU01568	1/2-13	5/8	0.02
SSC12*34	UU01569	1/2-13	3/4	0.03
SSC12*1	UU01570	1/2-13	1	0.04
SSC12*114	UU01571	1/2-13	1-1/4	0.05
SSC12*112	UU01572	1/2-13	1-1/2	0.06
SSC916*12	UU01573	9/16-12	1/2	0.01
SSC58*12	UU01574	5/8-11	1/2	0.01
SSC58*34	UU01575	5/8-11	3/4	0.03
SSC58*1	UU01576	5/8-11	1	0.05
SSC58*114	UU01577	5/8-11	1-1/4	0.07
SSC58*112	UU01578	5/8-11	1-1/2	0.09
SSC34*34	UU01579	3/4-10	3/4	0.02
SSC34*1	UU01580	3/4-10	1	0.03

Plain Steel - Fine Thread

SSF1032*316	UU01581	10-32	3/16	0.01
SSF1032*14	UU01582	10-32	1/4	0.01
SSF1032*38	UU01583	10-32	3/8	0.01
SSF1032*12	UU01584	10-32	1/2	0.01
SSF14*316	UU01585	1/4-28	3/16	0.01
SSF14*14	UU01586	1/4-28	1/4	0.01
SSF14*516	UU01587	1/4-28	5/16	0.01
SSF14*38	UU01588	1/4-28	3/8	0.01
SSF14*12	UU01589	1/4-28	1/2	0.01
SSF14*34	UU01590	1/4-28	3/4	0.01
SSF14*1	UU01591	1/4-28	1	0.01
SSF516*14	UU01592	5/16-24	1/4	0.01
SSF516*516	UU01593	5/16-24	5/16	0.01
SSF516*38	UU01594	5/16-24	3/8	0.01

SSF516*12	UU01595	5/16-24	1/2	0.01
SSF516*34	UU01596	5/16-24	3/4	0.01
SSF516*114	UU01597	5/16-24	1-1/4	0.02
SSF38*516	UU01598	3/8-24	5/16	0.02
SSF38*38	UU01599	3/8-24	3/8	0.02
SSF38*12	UU01600	3/8-24	1/2	0.02
SSF38*34	UU01601	3/8-24	3/4	0.02
SSF38*1	UU01602	3/8-24	1	0.02
SSF716*38	UU01603	7/16-20	3/8	0.01
SSF716*12	UU01604	7/16-20	1/2	0.02
SSF12*12	UU01605	1/2-20	1/2	0.02
SSF12*34	UU01606	1/2-20	3/4	0.03
SSF916*12	UU01607	9/16-18	1/2	0.02
SSF58*58	UU01608	5/8-18	5/8	0.04

## Square Head Set Screws

Plain Steel

SHS14*12	UU01609	1/4-20	1/2	0.01
SHS14*34	UU01610	1/4-20	3/4	0.02
SHS14*1	UU01611	1/4-20	1	0.02
SHS14*114	UU01612	1/4-20	1-1/4	0.03
SHS14*112	UU01613	1/4-20	1-1/2	0.03
SHS14*2	UU01614	1/4-20	2	0.03
SHS14*212	UU01615	1/4-20	2-1/2	0.04
SHS14*3	UU01616	1/4-20	3	0.05
SHS516*12	UU01617	5/16-18	1/2	0.02
SHS516*34	UU01618	5/16-18	3/4	0.03
SHS516*1	UU01619	5/16-18	1	0.03
SHS516*114	UU01620	5/16-18	1-1/4	0.04
SHS516*112	UU01621	5/16-18	1-1/2	0.04
SHS516*134	UU01622	5/16-18	1-3/4	0.05
SHS516*2	UU01623	5/16-18	2	0.05
SHS516*212	UU01624	5/16-18	2-1/2	0.06
SHS516*3	UU01625	5/16-18	3	0.07
SHS38*12	UU01626	3/8-16	1/2	0.03
SHS38*34	UU01627	3/8-16	3/4	0.04
SHS38*1	UU01628	3/8-16	1	0.04
SHS38*114	UU01629	3/8-16	1-1/4	0.05
SHS38*112	UU01630	3/8-16	1-1/2	0.06



• Cup point set screws

SHS38*2	UU01631	3/8-16	2	0.07
SHS38*12	UU01632	3/8-16	2-1/2	0.08
SHS38*3	UU01633	3/8-16	3	0.1
SHS38*312	UU01634	3/8-16	3-1/2	0.1
SHS38*4	UU01635	3/8-16	4	0.1
SHS716*12	UU01636	7/16-14	1/2	0.03
SHS716*34	UU01637	7/16-14	3/4	0.05
SHS716*1	UU01638	7/16-14	1	0.06
SHS716*114	UU01639	7/16-14	1-1/4	0.07
SHS716*112	UU01640	7/16-14	1-1/2	0.08
SHS716*134	UU01641	7/16-14	1-3/4	0.09
SHS716*2	UU01642	7/16-14	2	0.1
SHS716*212	UU01643	7/16-14	2-1/2	0.1
SHS716*3	UU01644	7/16-14	3	0.2
SHS12*34	UU01645	1/2-13	3/4	0.07
SHS12*1	UU01646	1/2-13	1	0.08
SHS12*114	UU01647	1/2-13	1-1/4	0.09
SHS12*112	UU01648	1/2-13	1-1/2	0.1
SHS12*134	UU01649	1/2-13	1-3/4	0.1
SHS12*2	UU01650	1/2-13	2	0.1
SHS12*212	UU01651	1/2-13	2-1/2	0.1
SHS12*3	UU01652	1/2-13	3	0.2

## Plain Steel (Continued)

Order Number	Price Ref. #	Thread (in)	Length (in)	Wt (lbs)
SHS12*312	UU01653	1/2-13	3-1/2	0.2
SHS12*4	UU01654	1/2-13	4	0.2
SHS58*34	UU01655	5/8-11	3/4	0.1
SHS58*1	UU01656	5/8-11	1	0.1
SHS58*114	UU01657	5/8-11	1-1/4	0.2
SHS58*112	UU01658	5/8-11	1-1/2	0.2
SHS58*2	UU01659	5/8-11	2	0.2
SHS58*212	UU01660	5/8-11	2-1/2	0.3
SHS58*3	UU01661	5/8-11	3	0.3
SHS58*312	UU01662	5/8-11	3-1/2	0.4
SHS58*4	UU01663	5/8-11	4	0.4
SHS34*1	UU01664	3/4-10	1	0.2
SHS34*114	UU01665	3/4-10	1-1/4	0.3

Order Number	Price Ref. #	Thread (in)	Length (in)	Wt (lbs)
SHS34*112	UU01666	3/4-10	1-1/2	0.3
SHS34*2	UU01667	3/4-10	2	0.3
SHS34*212	UU01668	3/4-10	2-1/2	0.4
SHS34*3	UU01669	3/4-10	3	0.5
SHS34*312	UU01670	3/4-10	3-1/2	0.6
SHS34*4	UU01671	3/4-10	4	0.6
SHS34*5	UU01672	3/4-10	5	0.7
SHS78*112	UU01673	7/8-9	1-1/2	0.4
SHS78*2	UU01674	7/8-9	2	0.5
SHS78*212	UU01675	7/8-9	2-1/2	0.6
SHS78*3	UU01676	7/8-9	3	0.6
SHS78*312	UU01677	7/8-9	3-1/2	0.7
SHS78*4	UU01678	7/8-9	4	0.8

## Threaded Rods

### Zinc Plated - Course Thread

Order Number	Price Ref. #	Thread (in)	Length (in)	Wt (lbs)
TR632*12	UU01679	6-32	12	0.04
TR832*12	UU01680	8-32	12	0.05
TR1024*12	UU01681	10-24	12	0.07
TR1024*36	UU01682	10-24	36	0.2
TR1024*72	UU01683	10-24	72	0.4
TR14*12	UU01684	1/4-20	12	0.1
TR14*36	UU01685	1/4-20	36	0.4
TR14*72	UU01686	1/4-20	72	1.2
TR516*12	UU01687	5/16-18	12	0.2
TR516*36	UU01688	5/16-18	36	0.6
TR516*72	UU01689	5/16-18	72	1.7
TR38*12	UU01690	3/8-16	12	0.3
TR38*36	UU01691	3/8-16	36	0.9
TR38*72	UU01692	3/8-16	72	2.3
TR716*12	UU01693	7/16-14	12	0.4
TR716*36	UU01694	7/16-14	36	1.2
TR716*72	UU01695	7/16-14	72	3.1
TR12*12	UU01696	1/2-13	12	0.5



Order Number	Price Ref. #	Thread (in)	Length (in)	Wt (lbs)
TR12*36	UU01697	1/2-13	36	1.6
TR12*72	UU01698	1/2-13	72	3.3
TR916*36	UU01699	9/16-12	36	2.0
TR916*72	UU01700	9/16-12	72	4.0
TR58*36	UU01701	5/8-11	36	2.5
TR58*72	UU01702	5/8-11	72	4.9
TR34*36	UU01703	3/4-10	36	3.7
TR34*72	UU01704	3/4-10	72	7.4
TR78*36	UU01705	7/8-9	36	5.1
TR78*72	UU01706	7/8-9	72	10.0
TR1*36	UU01707	1-8	36	6.7
TR1*72	UU01708	1-8	72	13.2
TR118*36	UU01709	1-1/8-7	36	7.8
TR114*36	UU01710	1-1/4-7	36	10.0
TR138*36	UU01711	1 3/8-6	36	12.5
TR112*36	UU01712	1-1/2-6	36	15.1
TR2*36	UU01713	2-4-1/2	36	27.4

### Plain Steel - Course Thread - B7 (Equal to Grade 5)

TR14*72B7	UU01714	1/4-20	72	1.2
TR516*72B7	UU01715	5/16-18	72	1.7
TR38*72B7	UU01716	3/8-16	72	2.3
TR716*72B7	UU01717	7/16-14	72	3.1

TR12*72B7	UU01718	1/2-13	72	3.3
TR58*72B7	UU01719	5/8-11	72	4.9
TR34*72B7	UU01720	3/4-10	72	7.4
TR78*72B7	UU01721	7/8-9	72	10.0
TR1*72B7	UU01722	1-8	72	13.2

### Zinc Plated - Fine Thread

TR1032*12	UU01723	10-32	12	0.07
TR1032*36	UU01724	10-32	36	0.2
TR1032*72	UU01725	10-32	72	0.4
TR14*36F	UU01726	1/4-28	36	0.4
TR516*36F	UU01727	5/16-24	36	0.6
TR38*36F	UU01728	3/8-24	36	0.9
TR716*36F	UU01729	7/16-20	36	1.3

TR12*36F	UU01730	1/2-20	36	1.7
TR58*36F	UU01731	5/8-18	36	2.7
TR34*36F	UU01732	3/4-16	36	3.9
TR78*36F	UU01733	7/8-14	36	5.4
TR1*36F	UU01734	1-14	36	7.1
TR118*36F	UU01735	1-1/8-12	36	8.6

### Stainless Steel

TR1024*36S	UU01736	10-24	36	0.2
TR14*36S	UU01737	1/4-20	36	0.4
TR516*36S	UU01738	5/16-18	36	0.6
TR38*36S	UU01739	3/8-16	36	0.9

TR12*36S	UU01740	1/2-13	36	1.6
TR58*36S	UU01741	5/8-11	36	2.5
TR34*36S	UU01742	3/4-10	36	3.7
TR78*36S	UU01743	7/8-9	36	5.1
TR1*36S	UU01744	1-8	36	6.7

## Eye Bolts

Zinc Plated



Order Number	Price Ref. #	Thread (in)	Length (in)	Load (lbs)	Wt (lbs)
N221051	UU01745	3/16	1-1/2	40	0.02
N221069	UU01746	3/16	2	40	0.02
N221077	UU01747	3/16	2-1/2	40	0.03
N221085	UU01748	1/4	2	80	0.04
N221101	UU01749	1/4	2-1/2	80	0.05
N221119	UU01750	1/4	3	80	0.05
N221127	UU01751	1/4	4	80	0.06
N221135	UU01752	1/4	5	80	0.08
N221143	UU01753	1/4	6	80	0.08
N221218	UU01754	5/16	3-1/4	90	0.09
N221226	UU01755	5/16	4	90	0.1
N221234	UU01756	5/16	5	90	0.1
N221242	UU01757	5/16	6	90	0.1
N221259	UU01758	3/8	3	160	0.2
N221267	UU01759	3/8	4	160	0.2
N221275	UU01760	3/8	5	160	0.2

Order Number	Price Ref. #	Thread (in)	Length (in)	Load (lbs)	Wt (lbs)
N221283	UU01761	3/8	6	160	0.2
N221291	UU01762	3/8	8	160	0.3
N221309	UU01763	1/2	4	300	0.3
N221317	UU01764	1/2	6	300	0.4
N221325	UU01765	1/2	8	300	0.5
N221333	UU01766	1/2	10	300	0.6
N221341	UU01767	1/2	12	300	0.7
N221108	UU01768	5/8	6	350	1.5
N221116	UU01769	5/8	8	350	1.75
N221124	UU01770	5/8	10	350	2.35
N221132	UU01771	5/8	12	350	2.45
N221184	UU01772	3/4	9	675	3.0
N221186	UU01773	3/4	12	675	4.0
N347765	UU01774	1	8	1450	2.6
N347773	UU01775	1	10	1450	3.0
N347781	UU01776	1	12	1450	3.4
N347799	UU01777	1	14	1450	3.8

Galvanized

N245076	UU01778	1/4	2	500	0.05
N245084	UU01779	1/4	4	500	0.07
N245100	UU01780	5/16	2-1/4	800	0.07
N245118	UU01781	5/16	4-1/4	800	0.1
N245126	UU01782	3/8	2-1/2	1200	0.1
N245134	UU01783	3/8	4-1/2	1200	0.2

N245142	UU01784	3/8	6	1200	0.2
N245159	UU01785	1/2	3-1/4	2200	0.3
N245167	UU01786	1/2	6	2200	0.4
N245175	UU01787	1/2	8	2200	0.5
N245183	UU01788	1/2	10	2200	0.6

Stainless Steel

N221556	UU01789	3/16	1-1/2	65	0.02
N221564	UU01790	3/16	2	65	0.02
N221572	UU01791	1/4	2	85	0.05
N221580	UU01792	1/4	2-1/2	85	0.05
N221598	UU01793	1/4	3	85	0.06
N221606	UU01794	1/4	4	85	0.07
N221614	UU01795	5/16	3-1/4	130	0.1

N221622	UU01796	5/16	4	130	0.1
N221630	UU01797	5/16	5	130	0.1
N221648	UU01798	3/8	4	160	0.2
N221655	UU01799	3/8	5	160	0.2
N221663	UU01800	3/8	6	160	0.2
N221671	UU01801	3/8	8	160	0.3

## U-Bolts

Zinc Plated



Order Number	Price Ref. #	Thread (in)	Width (in)	Length (in)	Wt (lbs)
N222075	UU01802	1/4	3/4	2-1/2	0.1
N222083	UU01803	1/4	1-1/8	2-1/4	0.1
N222109	UU01804	1/4	1-1/8	3-1/2	0.1
N222117	UU01805	1/4	1-3/8	4	0.2
N222133	UU01806	5/16	1-3/8	3-3/4	0.2
N222141	UU01807	5/16	1-3/4	3	0.2
N222158	UU01808	5/16	1-3/4	4-1/4	0.2

Order Number	Price Ref. #	Thread (in)	Width (in)	Length (in)	Wt (lbs)
N222166	UU01809	5/16	2	3-1/4	0.2
N222174	UU01810	5/16	2	4-1/2	0.2
N222182	UU01811	5/16	2-1/2	3-1/2	0.2
N222190	UU01812	3/8	2	3-1/2	0.3
N222208	UU01813	3/8	2-1/2	4	0.4
N222216	UU01814	3/8	3	4-1/2	0.4
N222224	UU01815	3/8	3-1/2	5-1/4	0.5

Stainless Steel

N222414	UU01816	1/4	3/4	2-1/2	0.1
N222422	UU01817	1/4	1-1/8	2-1/4	0.1
N222430	UU01818	1/4	1-1/8	3-1/2	0.1
N222448	UU01819	5/16	1-3/8	2-1/2	0.2

N222455	UU01820	5/16	1-3/4	4-1/4	0.2
N222463	UU01821	5/16	2	4-1/2	0.2
N222471	UU01822	5/16	2-1/2	5	0.3

## Pipe

Order Number	Price Ref. #	Pipe Size (in)	Plate	Wt (lbs)
N11230	UU01823	2-1/2	With plates	0.9
N11232	UU01824	3-1/2	With plates	0.9
N11234	UU01825	4	With plates	1.0

Order Number	Price Ref. #	Pipe Size (in)	Plate	Wt (lbs)
N11236	UU01826	5	Without plates	1.0
N11238	UU01827	6	Without plates	1.8
N11240	UU01828	8	Without plates	2.1

## Plates

Order Number	Price Ref. #	Size (in)	Wt (lbs)
N222323	UU01829	2	0.05
N222331	UU01830	3	0.1

Order Number	Price Ref. #	Size (in)	Wt (lbs)
N222349	UU01831	4	0.2

## Square U-Bolts

Zinc Plated

Order Number	Price Ref. #	Thread (in)	Width (in)	Length (in)	Wt (lbs)
N222356	UU01832	5/16	2	3	0.2
N222364	UU01833	5/16	2	5	0.2
N222372	UU01834	3/8	3	7	0.5

Order Number	Price Ref. #	Thread (in)	Width (in)	Length (in)	Wt (lbs)
N222380	UU01835	3/8	4	3	0.3
N222398	UU01836	3/8	4	5	0.4
N222406	UU01837	3/8	4	7	0.5



## Hook Bolts

Zinc

Order Number	Price Ref. #	Thread (in)	Length (in)	Load (lbs)	Wt (lbs)
N221697	UU01838	3/8	7	135	0.2



Stainless Steel

Order Number	Price Ref. #	Thread (in)	Length (in)	Load (lbs)	Wt (lbs)
N221713	UU01839	5/16	5	115	0.1

## Hex Nuts

Grade 2 - Course Thread - Zinc

Order Number	Price Ref. #	Thread (in)	Wt (lbs)
NC256	UU01840	2-56	0.01
NC440	UU01841	4-40	0.01
NC540	UU01842	5-40	0.01
NC632	UU01843	6-32	0.01
NC832	UU01844	8-32	0.01
NC1024	UU01845	10-24	0.01
NC1224	UU01846	12-24	0.01
NC14	UU01847	1/4-20	0.01
NC516	UU01848	5/16-18	0.01
NC38	UU01849	3/8-16	0.02
NC716	UU01850	7/16-14	0.03
NC12	UU01851	1/2-13	0.04



Order Number	Price Ref. #	Thread (in)	Wt (lbs)
NC916	UU01852	9/16-12	0.06
NC58	UU01853	5/8-11	0.07
NC34	UU01854	3/4-10	0.1
NC78	UU01855	7/8-9	0.2
NC1	UU01856	1-8	0.3
NC118	UU01857	1-1/8-7	0.4
NC114	UU01858	1-1/4-7	0.5
NC138	UU01859	1-3/8-6	0.7
NC112	UU01860	1-1/2-6	0.9
NC134	UU01861	1-3/4-5	1.5
NC2	UU01862	2-4	2.2

Grade 2 - Fine Thread - Zinc

NC1032	UU01863	10-32	0.01
NF14	UU01864	1/4-28	0.01
NF516	UU01865	5/16-24	0.01
NF38	UU01866	3/8-24	0.02
NF716	UU01867	7/16-20	0.03
NF12	UU01868	1/2-20	0.04
NF916	UU01869	9/16-18	0.06
NF58	UU01870	5/8-18	0.08

NF34	UU01871	3/4-16	0.1
NF78	UU01872	7/8-14	0.2
NF1	UU01873	1-12	0.3
NF118	UU01874	1-1/8-12	0.4
NF114	UU01875	1-1/4-12	0.5
NF138	UU01876	1-3/8-12	0.7
NF112	UU01877	1-1/2-12	0.9

## Hex Nuts

### Grade 8 - Course Thread - Yellow Zinc

Order Number	Price Ref. #	Thread (in)	Wt (lbs)
NC14G8	UU01878	1/4-20	0.01
NC516G8	UU01879	5/16-18	0.01
NC38G8	UU01880	3/8-16	0.02
NC716G8	UU01881	7/16-14	0.03
NC12G8	UU01882	1/2-13	0.04

Order Number	Price Ref. #	Thread (in)	Wt (lbs)
NC916G8	UU01883	9/16-12	0.06
NC58G8	UU01884	5/8-11	0.07
NC34G8	UU01885	3/4-10	0.1
NC78G8	UU01886	7/8-9	0.2
NC1G8	UU01887	1-8	0.3

### Grade 8 - Fine Thread - Yellow Zinc

Order Number	Price Ref. #	Thread (in)	Wt (lbs)
NF14G8	UU01888	1/4-28	0.01
NF516G8	UU01889	5/16-24	0.01
NF38G8	UU01890	3/8-24	0.02
NF716G8	UU01891	7/16-20	0.03
NF12G8	UU01892	1/2-20	0.04

Order Number	Price Ref. #	Thread (in)	Wt (lbs)
NF916G8	UU01893	9/16-18	0.06
NF58G8	UU01894	5/8-18	0.07
NF34G8	UU01895	3/4-16	0.1
NF78G8	UU01896	7/8-14	0.2
NF1G8	UU01897	1-12	0.3

### Stainless Steel

Order Number	Price Ref. #	Thread (in)	Wt (lbs)
NC440S	UU01898	4-40	0.01
NC632S	UU01899	6-32	0.01
NC832S	UU01900	8-32	0.01
NC1024S	UU01901	10-24	0.01
NC1032S	UU01902	10-32	0.01
NC14S	UU01903	1/4-20	0.01
NC516S	UU01904	5/16-18	0.01

Order Number	Price Ref. #	Thread (in)	Wt (lbs)
NC38S	UU01905	3/8-16	0.02
NC716S	UU01906	7/16-14	0.03
NC12S	UU01907	1/2-13	0.04
NC58S	UU01908	5/8-11	0.07
NC34S	UU01909	3/4-10	0.1
NC78S	UU01910	7/8-9	0.2
NC1S	UU01911	1-8	0.3

### Galvanized

Order Number	Price Ref. #	Thread (in)	Wt (lbs)
NC14G	UU03082	1/4-20	0.01
NC516G	UU03083	5/16-18	0.01
NC38G	UU03084	3/8-16	0.02

Order Number	Price Ref. #	Thread (in)	Wt (lbs)
NC12G	UU03085	1/3-13	0.04
NC58G	UU03086	5/8-11	0.07
NC34G	UU03087	3/4-10	0.10

## Nylon Lock Nuts

### Zinc Plated - Course Thread

Order Number	Price Ref. #	Thread (in)	Wt (lbs)
NNC440	UU01912	4-40	0.01
NNC632	UU01913	6-32	0.01
NNC832	UU01914	8-32	0.01
NNC1024	UU01915	10-24	0.01
NNC1224	UU01916	12-24	0.01
NNC14	UU01917	1/4-20	0.01
NNC516	UU01918	5/16-18	0.01
NNC38	UU01919	3/8-16	0.02
NNC716	UU01920	7/16-14	0.03



### • Nylon Inserts

Order Number	Price Ref. #	Thread (in)	Wt (lbs)
NNC12	UU01921	1/2-13	0.04
NNC916	UU01922	9/16-12	0.06
NNC58	UU01923	5/8-11	0.07
NNC34	UU01924	3/4-10	0.1
NNC78	UU01925	7/8-9	0.2
NNC1	UU01926	1-8	0.3
NNC118	UU01927	1-1/8-7	0.4
NNC114	UU01928	1-1/4-7	0.5
NNC112	UU01929	1-1/2-6	0.9

### Zinc Plated - Fine Thread

Order Number	Price Ref. #	Thread (in)	Wt (lbs)
NNC1032	UU01930	10-32	0.01
NNF14	UU01931	1/4-28	0.01
NNF516	UU01932	5/16-24	0.01
NNF38	UU01933	3/8-24	0.02
NNF716	UU01934	7/16-20	0.03
NNF12	UU01935	1/2-20	0.04
NNF916	UU01936	9/16-18	0.06

Order Number	Price Ref. #	Thread (in)	Wt (lbs)
NNF58	UU01937	5/8-18	0.07
NNF34	UU01938	3/4-16	0.1
NNF78	UU01939	7/8-14	0.2
NNF1	UU01940	1-12	0.3
NNF118	UU01941	1-1/8-12	0.4
NNF114	UU01942	1-1/4-12	0.5
NNF112	UU01943	1-1/2-12	0.9

### Stainless Steel

Order Number	Price Ref. #	Thread (in)	Wt (lbs)
NNC440S	UU01944	4-40	0.01
NNC632S	UU01945	6-32	0.01
NNC832S	UU01946	8-32	0.01
NNC1024S	UU01947	10-24	0.01
NNC1032S	UU01948	10-32	0.01
NNC14S	UU01949	1/4-20	0.01

Order Number	Price Ref. #	Thread (in)	Wt (lbs)
NNC516S	UU01950	5/16-18	0.01
NNC38S	UU01951	3/8-16	0.02
NNC716S	UU01952	7/16-14	0.03
NNC12S	UU01953	1/2-13	0.04
NNC58S	UU01954	5/8-11	0.07

## Steel Lock Nuts

Zinc Plated Grade "C" - Course Thread



Order Number	Price Ref. #	Thread (in)	Wt (lbs)
SNC14	UU01955	1/4-20	0.01
SNC516	UU01956	5/16-18	0.01
SNC38	UU01957	3/8-16	0.02
SNC716	UU01958	7/16-14	0.03
SNC12	UU01959	1/2-13	0.04

Order Number	Price Ref. #	Thread (in)	Wt (lbs)
SNC916	UU01960	9/16-12	0.06
SNC58	UU01961	5/8-11	0.07
SNC34	UU01962	3/4-10	0.1
SNC78	UU01963	7/8-9	0.2
SNC1	UU01964	1-8	0.3

Zinc Plated Grade "C" - Fine Thread

Order Number	Price Ref. #	Thread (in)	Wt (lbs)
SNF14	UU01965	1/4-28	0.01
SNF516	UU01966	5/16-24	0.01
SNF38	UU01967	3/8-24	0.02
SNF716	UU01968	7/16-20	0.03
SNF12	UU01969	1/2-20	0.04

Order Number	Price Ref. #	Thread (in)	Wt (lbs)
SNF916	UU01970	9/16-18	0.06
SNF58	UU01971	5/8-18	0.07
SNF34	UU01972	3/4-16	0.1
SNF78	UU01973	7/8-14	0.2
SNF1	UU01974	1-12	0.3

Grade 9 - Course Thread

Order Number	Price Ref. #	Thread (in)	Wt (lbs)
SNC38G9	UU01975	3/8-16	0.02
SNC716G9	UU01976	7/16-14	0.03
SNC12G9	UU01977	1/2-13	0.04
SNC916G9	UU01978	9/16-12	0.06

Order Number	Price Ref. #	Thread (in)	Wt (lbs)
SNC58G9	UU01979	5/8-11	0.07
SNC34G9	UU01980	3/4-10	0.1
SNC78G9	UU01981	7/8-9	0.2
SNC1G9	UU01982	1-8	0.3

Grade 9 - Fine Thread

Order Number	Price Ref. #	Thread (in)	Wt (lbs)
SNF38G9	UU01983	3/8-24	0.02
SNF716G9	UU01984	7/16-20	0.03
SNF12G9	UU01985	1/2-20	0.04
SNF916G9	UU01986	9/16-18	0.06

Order Number	Price Ref. #	Thread (in)	Wt (lbs)
SNF58G9	UU01987	5/8-18	0.07
SNF34G9	UU01988	3/4-16	0.1
SNF78G9	UU01989	7/8-14	0.2
SNF1G9	UU01990	1-12	0.3

## Flange Nuts

Zinc Plated - Course Thread



• Serrated

Order Number	Price Ref. #	Thread (in)	Wt (lbs)
FN632	UU01991	6-32	0.01
FN832	UU01992	8-32	0.01
FN1024	UU01993	10-24	0.01
FN1032	UU01994	10-32	0.01
FN14	UU01995	1/4-20	0.02
FN516	UU01996	5/16-18	0.02

Order Number	Price Ref. #	Thread (in)	Wt (lbs)
FN38	UU01997	3/8-16	0.04
FN716	UU01998	7/16-14	0.04
FN12	UU01999	1/2-13	0.05
FN58	UU02000	5/8-11	0.09
FN34	UU02001	3/4-10	0.1

## Jam Nuts

Zinc Plated - Course Thread



Order Number	Price Ref. #	Thread (in)	Wt (lbs)
JNC14	UU02002	1/4-20	0.01
JNC516	UU02003	5/16-18	0.01
JNC38	UU02004	3/8-16	0.01
JNC716	UU02005	7/16-14	0.02
JNC12	UU02006	1/2-13	0.03

Order Number	Price Ref. #	Thread (in)	Wt (lbs)
JNC916	UU02007	9/16-12	0.04
JNC58	UU02008	5/8-11	0.05
JNC34	UU02009	3/4-10	0.08
JNC78	UU02010	7/8-9	0.1
JNC1	UU02011	1-8	0.2

Zinc Plated - Fine Thread

Order Number	Price Ref. #	Thread (in)	Wt (lbs)
JNF14	UU02012	1/4-28	0.01
JNF516	UU02013	5/16-24	0.01
JNF38	UU02014	3/8-24	0.01
JNF716	UU02015	7/16-20	0.02
JNF12	UU02016	1/2-20	0.03

Order Number	Price Ref. #	Thread (in)	Wt (lbs)
JNF916	UU02017	9/16-18	0.04
JNF58	UU02018	5/8-18	0.05
JNF34	UU02019	3/4-16	0.08
JNF78	UU02020	7/8-14	0.1
JNF1	UU02021	1-14	0.2

## Jam Lock Nuts

### Course Thread

Order Number	Price Ref. #	Thread (in)	Wt (lbs)
JNNC14	UU02022	1/4-20	0.01
JNNC516	UU02023	5/16-18	0.01
JNNC38	UU02024	3/8-16	0.01
JNNC12	UU02025	1/2-13	0.03

### Fine Thread

JNNF14	UU02029	1/4-28	0.01
JNNF516	UU02030	5/16-24	0.01
JNNF38	UU02031	3/8-24	0.01
JNNF12	UU02032	1/2-20	0.03

## Wing Nuts

### Zinc Plated

Order Number	Price Ref. #	Thread (in)	Wt (lbs)
WN1024	UU02036	10-24	0.01
WN1032	UU02037	10-32	0.01
WN632	UU02038	6-32	0.01
WN832	UU02039	8-32	0.01
WN14	UU02040	1/4-20	0.01
WN516	UU02041	5/16-18	0.02

## Slotted (Castle) Nuts

### Course Thread

Order Number	Price Ref. #	Thread (in)	Wt (lbs)
CNC14	UU02047	1/4-20	0.01
CNC516	UU02048	5/16-18	0.01
CNC38	UU02049	3/8-16	0.01
CNC716	UU02050	7/16-14	0.02
CNC12	UU02051	1/2-13	0.03
CNC916	UU02052	9/16-12	0.05
CNC58	UU02053	5/8-11	0.05
CNC34	UU02054	3/4-10	0.09

### Fine Thread

CNF14	UU02062	1/4-28	0.01
CNF516	UU02063	5/16-24	0.01
CNF38	UU02064	3/8-24	0.01
CNF716	UU02065	7/16-20	0.02
CNF12	UU02066	1/2-20	0.03
CNF916	UU02067	9/16-18	0.05
CNF58	UU02068	5/8-18	0.05

## Square Nuts

### Zinc Plated

Order Number	Price Ref. #	Thread (in)	Wt (lbs)
SN632	UU02075	6-32	0.01
SN832	UU02076	8-32	0.01
SN1024	UU02077	10-24	0.01
SN1032	UU02078	10-32	0.01
SN14	UU02079	1/4-20	0.01
SN516	UU02080	5/16-18	0.01
SN38	UU02081	3/8-16	0.02



• Nylon insert

Order Number	Price Ref. #	Thread (in)	Wt (lbs)
JNNC58	UU02026	5/8-11	0.05
JNNC34	UU02027	3/4-10	0.08
JNNC1	UU02028	1-8	0.2

JNNF58	UU02033	5/8-18	0.05
JNNF34	UU02034	3/4-16	0.08
JNNF1	UU02035	1-14	0.2

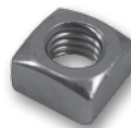


Order Number	Price Ref. #	Thread (in)	Wt (lbs)
WN38	UU02042	3/8-16	0.04
WN716	UU02043	7/16-14	0.08
WN12	UU02044	1/2-13	0.08
WN58	UU02045	5/8-11	0.1
WN34	UU02046	3/4-10	0.2



Order Number	Price Ref. #	Thread (in)	Wt (lbs)
CNC78	UU02055	7/8-9	0.2
CNC1	UU02056	1-8	0.2
CNC118	UU02057	1 1/8-7	0.4
CNC114	UU02058	1 1/4-7	0.5
CNC138	UU02059	1 3/8-7	0.6
CNC112	UU02060	1 1/2-6	0.8
CNC134	UU02061	1 3/4-5	1.3

CNF34	UU02069	3/4-16	0.09
CNF78	UU02070	7/8-14	0.2
CNF1	UU02071	1-14	0.2
CNF118	UU02072	1 1/8-12	0.4
CNF114	UU02073	1 1/4-12	0.5
CNF112	UU02074	1 1/2-12	0.8



Order Number	Price Ref. #	Thread (in)	Wt (lbs)
SN716	UU02082	7/16-14	0.04
SN12	UU02083	1/2-13	0.06
SN58	UU02084	5/8-11	0.1
SN34	UU02085	3/4-10	0.2
SN78	UU02086	7/8-9	0.2
SN1	UU02087	1-8	0.3

## Keq Nuts

Zinc Plated



Order Number	Price Ref. #	Thread (in)	Wt (lbs)
KN632	UU02088	6-32	0.01
KN832	UU02089	8-32	0.01
KN1024	UU02090	10-24	0.01
KN1032	UU02091	10-32	0.01

Order Number	Price Ref. #	Thread (in)	Wt (lbs)
KN14	UU02092	1/4-20	0.01
KN516	UU02093	5/16-18	0.01
KN38	UU02094	3/8-16	0.02

## Acorn Nuts

Nickel Plated

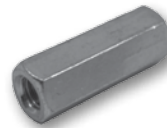


Order Number	Price Ref. #	Thread (in)	Wt (lbs)
AN632	UU02095	6-32	0.01
AN832	UU02096	8-32	0.01
AN1024	UU02097	10-24	0.01
AN1032	UU02098	10-32	0.01
AN14	UU02099	1/4-20	0.02

Order Number	Price Ref. #	Thread (in)	Wt (lbs)
AN516	UU02100	5/16-18	0.02
AN38	UU02101	3/8-16	0.03
AN716	UU02102	7/16-14	0.03
AN12	UU02103	1/2-13	0.04

## Coupling Nuts

Zinc Plated - Course Thread



Order Number	Price Ref. #	Thread (in)	Wt (lbs)
CN1032	UU02104	10-32	0.01
CN316	UU02105	3/16-24	0.01
CN14	UU02106	1/4-20	0.02
CN516	UU02107	5/16-18	0.07
CN38	UU02108	3/8-16	0.1
CN716	UU02109	7/16-14	0.1

Order Number	Price Ref. #	Thread (in)	Wt (lbs)
CN12	UU02110	1/2-13	0.1
CN58	UU02111	5/8-11	0.2
CN34	UU02112	3/4-10	0.3
CN78	UU02113	7/8-9	0.5
CN1	UU02114	1-8	0.6

Zinc Plated - Fine Thread

CN14F	UU02115	1/4-28	0.02
CN516F	UU02116	5/16-24	0.07
CN38F	UU02117	3/8-24	0.1

CN716F	UU02118	7/16-20	0.1
CN12F	UU02119	1/2-20	0.1
CN58F	UU02120	5/8-18	0.2

## Flat Washers

Zinc Plated



Order Number	Price Ref. #	Diameter (in)	Wt (lbs)
FW2*	UU02121	#2	0.01
FW4	UU02122	#4	0.01
FW6	UU02123	#6	0.01
FW8	UU02124	#8	0.01
FW10	UU02125	#10	0.01
FW120	UU02126	#12	0.01
FW316	UU02127	3/16	0.01
FW14	UU02128	1/4	0.01
FW516	UU02129	5/16	0.01
FW38	UU02130	3/8	0.01
FW716	UU02131	7/16	0.02
FW12	UU02132	1/2	0.03
FW916	UU02133	9/16	0.03

Order Number	Price Ref. #	Diameter (in)	Wt (lbs)
FW58	UU02134	5/8	0.07
FW34	UU02135	3/4	0.09
FW78	UU02136	7/8	0.2
FW1	UU02137	1	0.2
FW118	UU02138	1-1/8	0.2
FW114	UU02139	1-1/4	0.2
FW138	UU02140	1-3/8	0.4
FW112	UU02141	1-1/2	0.4
FW158	UU02142	1-5/8	0.4
FW134	UU02143	1-3/4	0.4
FW2	UU02144	2	0.7
FW3	UU02145	3	1.5

## Flat Washers

### Stainless Steel

Order Number	Price Ref. #	Diameter (in)	Wt (lbs)
FW4S	UU02146	#4	0.01
FW6S	UU02147	#6	0.01
FW8S	UU02148	#8	0.01
FW10S	UU02149	#10	0.01
FW14S	UU02150	1/4	0.01
FW516S	UU02151	5/16	0.01
FW38S	UU02152	3/8	0.01

Order Number	Price Ref. #	Diameter (in)	Wt (lbs)
FW716S	UU02153	7/16	0.02
FW12S	UU02154	1/2	0.03
FW58S	UU02155	5/8	0.07
FW34S	UU02156	3/4	0.09
FW78S	UU02157	7/8	0.2
FW1S	UU02158	1	0.2

### Galvanized

FW14G	UU03088	1/4	0.01
FW516G	UU03089	5/16	0.01
FW38G	UU03090	3/8	0.01

FW12G	UU03091	1/2	0.01
FW58G	UU03092	5/8	0.06
FW34G	UU03093	3/4	0.10

## Lock Washers

### Zinc Plated

Order Number	Price Ref. #	Diameter (in)	Wt (lbs)
LW4	UU02159	#4	0.01
LW6	UU02160	#6	0.01
LW8	UU02161	#8	0.01
LW10	UU02162	#10	0.01
LW120	UU02163	#12	0.01
LW14	UU02164	1/4	0.01
LW516	UU02165	5/16	0.01
LW38	UU02166	3/8	0.01
LW716	UU02167	7/16	0.01
LW12	UU02168	1/2	0.01



Order Number	Price Ref. #	Diameter (in)	Wt (lbs)
LW916	UU02169	9/16	0.02
LW58	UU02170	5/8	0.03
LW34	UU02171	3/4	0.04
LW78	UU02172	7/8	0.06
LW1	UU02173	1	0.09
LW118	UU02174	1-1/8	0.1
LW114	UU02175	1-1/4	0.2
LW1120	UU02176	1-1/2	0.3
LW2	UU02177	2	0.4

## Lock Washers

### Stainless Steel

Order Number	Price Ref. #	Diameter (in)	Wt (lbs)
LW4S	UU02178	#4	0.01
LW6S	UU02179	#6	0.01
LW8S	UU02180	#8	0.01
LW10S	UU02181	10-24	0.01
LW14S	UU02182	1/4	0.01
LW516S	UU02183	5/16	0.01

Order Number	Price Ref. #	Diameter (in)	Wt (lbs)
LW38S	UU02184	3/8	0.01
LW716S	UU02185	7/16	0.01
LW12S	UU02186	1/2	0.01
LW58S	UU02187	5/8	0.03
LW34S	UU02188	3/4	0.04

### External Lock Washers

EW6	UU02189	#6	0.01
EW8	UU02190	#8	0.01
EW10	UU02191	#10	0.01
EW12*	UU02192	#12	0.01
EW14	UU02193	1/4	0.01
EW516	UU02194	5/16	0.01
EW38	UU02195	3/8	0.01



EW716	UU02196	7/16	0.01
EW12	UU02197	1/2	0.01
EW916	UU02198	9/16	0.01
EW58	UU02199	5/8	0.01
EW34	UU02200	3/4	0.01
EW78	UU02201	7/8	0.01
EW1	UU02202	1	0.02

## Lock Washers

### Internal Lock Washers



Order Number	Price Ref. #	Diameter (in)	Wt (lbs)
IW6	UU02203	#6	0.01
IW8	UU02204	#8	0.01
IW10	UU02205	#10	0.01
IW14	UU02206	1/4	0.01
IW516	UU02207	5/16	0.01
IW38	UU02208	3/8	0.01
IW716	UU02209	7/16	0.01

Order Number	Price Ref. #	Diameter (in)	Wt (lbs)
IW12	UU02210	1/2	0.01
IW916	UU02211	9/16	0.01
IW58	UU02212	5/8	0.01
IW34	UU02213	3/4	0.01
IW78	UU02214	7/8	0.01
IW1	UU02215	1	0.02

## Machine Washers

### Regular Washers



Order Number	Price Ref. #	Diameter (in)	Wt (lbs)
MW12	UU02216	1/2	0.01
MW916	UU02217	9/16	0.01
MW58	UU02218	5/8	0.01
MW34	UU02219	3/4	0.02
MW78	UU02220	7/8	0.02
MW1	UU02221	1	0.02
MW118	UU02222	1-1/8	0.03
MW114	UU02223	1-1/4	0.03
MW138	UU02224	1-3/8	0.03
MW112	UU02225	1-1/2	0.03

Order Number	Price Ref. #	Diameter (in)	Wt (lbs)
MW158	UU02226	1-5/8	0.03
MW134	UU02227	1-3/4	0.05
MW178	UU02228	1-7/8	0.07
MW2	UU02229	2	0.08
MW218	UU02230	2-1/8	0.09
MW214	UU02231	2-1/4	0.09
MW238	UU02232	2-3/8	0.1
MW212	UU02233	2-1/2	0.1
MW3	UU02234	3	0.1

### Wide Washers

MW58WR	UU02235	5/8 x 1-1/4	0.02
MW34WR	UU02236	3/4 x 1-1/2	0.03
MW78WR	UU02237	7/8 x 1-3/4	0.04
MW1WR	UU02238	1 x 2	0.05
MW118WR	UU02239	1-1/8 x 2-1/8	0.06
MW114WR	UU02240	1-1/4 x 2-1/4	0.06
MW138WR	UU02241	1-3/8 x 2-1/2	0.08
MW112WR	UU02242	1-1/2 x 3	0.1

MW158WR	UU02243	1-5/8 x 3-1/8	0.1
MW134WR	UU02244	1-3/4 x 3-1/4	0.1
MW178WR	UU02245	1-7/8 x 3-3/8	0.1
MW2WR	UU02246	2 x 3-1/2	0.1
MW218WR	UU02247	2-1/8 x 3-5/8	0.1
MW214WR	UU02248	2-1/4 x 3-3/4	0.1
MW12WR	UU02249	2-1/2 x 3-7/8	0.1
MW234WR	UU02250	2-3/4 x 4	0.1
MW3WR	UU02251	3 x 4-1/4	0.1

## SAE Washers

### Zinc Plated

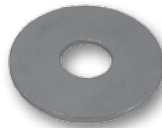


Order Number	Price Ref. #	Diameter (in)	Wt (lbs)
SW14	UU02252	1/4	0.01
SW516	UU02253	5/16	0.01
SW38	UU02254	3/8	0.01
SW716	UU02255	7/16	0.02
SW12	UU02256	1/2	0.03

Order Number	Price Ref. #	Diameter (in)	Wt (lbs)
SW916	UU02257	9/16	0.03
SW58	UU02258	5/8	0.07
SW34	UU02259	3/4	0.09
SW78	UU02260	7/8	0.1
SW1	UU02261	1	0.2

## Fender Washers

Zinc Plated



Order Number	Price Ref. #	Diameter (in)	Wt (lbs)
FDW6	UU02262	6 x 5/8	0.01
FDW8	UU02263	8 x 3/4	0.01
FDW316	UU02264	3/16	0.01
FDW14*1	UU02265	1/4 x 1	0.02
FDW14*114	UU02266	1/4 x 1-1/4	0.02
FDW14*112	UU02267	1/4 x 1-1/2	0.03

Order Number	Price Ref. #	Diameter (in)	Wt (lbs)
FDW516	UU02268	5/16 x 1-1/4	0.02
FDW38*114	UU02269	3/8 x 1-1/4	0.02
FDW38*112	UU02270	3/8 x 1-1/2	0.03
FDW38*2	UU02271	3/8 x 2	0.05
FDW12	UU02272	1/2	0.05

Stainless Steel

FDW316S	UU02274	3/16	0.01
FDW14S	UU02275	1/4	0.02
FDW516S	UU02276	5/16	0.02

FDW38S	UU02277	3/8	0.02
FDW12S	UU02278	1/2	0.05

## Quick Repair Washers

Zinc Plated



Order Number	Price Ref. #	Diameter (in)	Wt (lbs)
QRW34	UU02279	3/4	0.06
QRW78	UU02280	7/8	0.07
QRW1	UU02281	1	0.08
QRW118	UU02282	1-1/8	0.09

Order Number	Price Ref. #	Diameter (in)	Wt (lbs)
QRW114	UU02283	1-1/4	0.1
QRW138	UU02284	1-3/8	0.1
QRW112	UU02285	1-1/2	0.1
QRW134	UU02286	1-3/4	0.1
QRW2	UU02287	2	0.1

## Hex Bolts

Zinc Plated - Course Thread



Order Number	Price Ref. #	Thread (mm)	Length (mm)	Wt (lbs)
H4*10M	UU02288	4-.70	10	0.01
H4*12M	UU02289	4-.70	12	0.01
H4*20M	UU02290	4-.70	20	0.01
H4*25M	UU02291	4-.70	25	0.01
H4*30M	UU02292	4-.70	30	0.01
H4*50M	UU02293	4-.70	50	0.01
H5*10M	UU02294	5-.80	10	0.01
H5*12M	UU02295	5-.80	12	0.01
H5*20M	UU02296	5-.80	20	0.01
H5*25M	UU02297	5-.80	25	0.01
H5*30M	UU02298	5-.80	30	0.01
H5*50M	UU02299	5-.80	50	0.01
H6*10M	UU02300	6-1.00	10	0.01
H6*12M	UU02301	6-1.00	12	0.01
H6*16M	UU02302	6-1.00	16	0.01
H6*20M	UU02303	6-1.00	20	0.01
H6*25M	UU02304	6-1.00	25	0.01
H6*30M	UU02305	6-1.00	30	0.01
H6*45M	UU02306	6-1.00	45	0.02
H6*50M	UU02307	6-1.00	50	0.02
H6*80M	UU02308	6-1.00	80	0.04
H8*12M	UU02309	8-1.25	12	0.02
H8*16M	UU02310	8-1.25	16	0.02
H8*20M	UU02311	8-1.25	20	0.02
H8*25M	UU02312	8-1.25	25	0.03
H8*30M	UU02313	8-1.25	30	0.03
H8*35M	UU02314	8-1.25	35	0.03
H8*40M	UU02315	8-1.25	40	0.04
H8*45M	UU02316	8-1.25	45	0.04
H8*50M	UU02317	8-1.25	50	0.05
H8*60M	UU02318	8-1.25	60	0.06
H8*80M	UU02319	8-1.25	80	0.07

Order Number	Price Ref. #	Thread (mm)	Length (mm)	Wt (lbs)
H8*100M	UU02320	8-1.25	100	0.09
H8*120M	UU02321	8-1.25	120	0.11
H10*20M	UU02322	10-1.50	20	0.04
H10*25M	UU02323	10-1.50	25	0.05
H10*30M	UU02324	10-1.50	30	0.05
H10*35M	UU02325	10-1.50	35	0.06
H10*40M	UU02326	10-1.50	40	0.07
H10*45M	UU02327	10-1.50	40	0.07
H10*50M	UU02328	10-1.50	50	0.08
H10*60M	UU02329	10-1.50	60	0.09
H10*70M	UU02330	10-1.50	70	0.1
H10*80M	UU02331	10-1.50	80	0.1
H10*100M	UU02332	10-1.50	100	0.2
H10*120M	UU02333	10-1.50	120	0.2
H10*140M	UU02334	10-1.50	140	0.2
H10*160M	UU02335	10-1.50	160	0.2
H10*180M	UU02336	10-1.50	180	0.3
H12*25M	UU02337	12-1.75	25	0.07
H12*30M	UU02338	12-1.75	30	0.08
H12*35M	UU02339	12-1.75	35	0.09
H12*40M	UU02340	12-1.75	40	0.1
H12*50M	UU02341	12-1.75	50	0.1
H12*60M	UU02342	12-1.75	60	0.1
H12*70M	UU02343	12-1.75	70	0.1
H12*80M	UU02344	12-1.75	80	0.2
H12*90M	UU02345	12-1.75	90	0.2
H12*100M	UU02346	12-1.75	100	0.2
H12*110M	UU02347	12-1.75	110	0.2
H12*120M	UU02348	12-1.75	120	0.3
H12*130M	UU02349	12-1.75	130	0.3
H12*140M	UU02350	12-1.75	140	0.3
H12*160M	UU02351	12-1.75	160	0.3

## Zinc Plated - Course Thread (Continued)

Order Number	Price Ref. #	Thread (mm)	Length (mm)	Wt (lbs)
H12*180M	UU02352	12-1.75	180	0.4
H12*200M	UU02353	12-1.75	200	0.4
H14*30M	UU02354	14-2.00	30	0.1
H14*35M	UU02355	14-2.00	35	0.1
H14*40M	UU02356	14-2.00	40	0.1
H14*50M	UU02357	14-2.00	50	0.2
H14*60M	UU02358	14-2.00	60	0.2
H14*70M	UU02359	14-2.00	70	0.2
H14*80M	UU02360	14-2.00	80	0.3
H14*90M	UU02361	14-2.00	90	0.3
H14*100M	UU02362	14-2.00	100	0.2
H14*110M	UU02363	14-2.00	110	0.3
H14*120M	UU02364	14-2.00	120	0.4
H14*140M	UU02365	14-2.00	140	0.4
H14*160M	UU02366	14-2.00	160	0.5
H16*35M	UU02367	16-2.00	35	0.2
H16*40M	UU02368	16-2.00	40	0.2
H16*50M	UU02369	16-2.00	50	0.2
H16*60M	UU02370	16-2.00	60	0.3
H16*80M	UU02371	16-2.00	80	0.4
H16*100M	UU02372	16-2.00	100	0.4
H16*130M	UU02373	16-2.00	130	0.5

Order Number	Price Ref. #	Thread (mm)	Length (mm)	Wt (lbs)
H16*160M	UU02374	16-2.00	160	0.6
H16*180M	UU02375	16-2.00	180	0.7
H16*220M	UU02376	16-2.00	220	0.8
H16*250M	UU02377	16-2.00	250	0.9
H18*30M	UU02378	18-1.50	30	0.2
H18*50M	UU02379	18-1.50	50	0.3
H18*60M	UU02380	18-1.50	60	0.3
H20*40M	UU02381	20-2.50	40	0.3
H20*50M	UU02382	20-2.50	50	0.4
H20*80M	UU02383	20-2.50	80	0.5
H20*100M	UU02384	20-2.50	100	0.6
H20*130M	UU02385	20-2.50	130	0.8
H20*160M	UU02386	20-2.50	160	1.0
H20*200M	UU02387	20-2.50	200	1.2
H20*240M	UU02388	20-2.50	240	1.4
H24*100M	UU02389	24-3.00	100	1.0
H24*140M	UU02390	24-3.00	140	1.3
H24*180M	UU02391	24-3.00	180	1.6
H24*240M	UU02392	24-3.00	240	2.0
H24*280M	UU02393	24-3.00	280	2.3

## Zinc Plated - Fine Thread

H8*16MF	UU02394	8-1.00	16	0.02
H8*20MF	UU02395	8-1.00	20	0.02
H8*25MF	UU02396	8-1.00	25	0.03
H8*30MF	UU02397	8-1.00	30	0.03
H8*35MF	UU02398	8-1.00	35	0.03
H8*40MF	UU02399	8-1.00	40	0.04
H8*50MF	UU02400	8-1.00	50	0.05
H8*70MF	UU02401	8-1.00	70	0.06
H8*80MF	UU02402	8-1.00	80	0.07
H8*90MF	UU02403	8-1.00	90	0.08
H10*25MF1	UU02404	10-1.00	25	0.05
H10*30MF1	UU02405	10-1.00	30	0.05
H10*35MF1	UU02406	10-1.00	35	0.06
H10*40MF1	UU02407	10-1.00	40	0.07
H10*20MF	UU02408	10-1.25	20	0.04
H10*25MF	UU02409	10-1.25	25	0.05
H10*30MF	UU02410	10-1.25	30	0.05
H10*35MF	UU02411	10-1.25	35	0.06
H10*40MF	UU02412	10-1.25	40	0.07
H10*50MF	UU02413	10-1.25	50	0.08
H10*60MF	UU02414	10-1.25	60	0.09
H10*70MF	UU02415	10-1.25	70	0.1
H10*80MF	UU02416	10-1.25	80	0.1
H10*90MF	UU02417	10-1.25	90	0.2
H10*100MF	UU02418	10-1.25	100	0.2
H12*30MF	UU02419	12-1.50	30	0.08
H12*40MF	UU02420	12-1.50	40	0.1
H12*50MF	UU02421	12-1.50	50	0.1

H12*60MF	UU02422	12-1.50	60	0.1
H12*65MF	UU02423	12-1.50	65	0.1
H12*70MF	UU02424	12-1.50	70	0.1
H12*80MF	UU02425	12-1.50	80	0.2
H12*90MF	UU02426	12-1.50	90	0.2
H12*120MF	UU02427	12-1.50	120	0.3
H14*30MF	UU02428	14-1.50	30	0.1
H14*40MF	UU02429	14-1.50	40	0.1
H14*50MF	UU02430	14-1.50	50	0.2
H14*60MF	UU02431	14-1.50	60	0.2
H14*70MF	UU02432	14-1.50	70	0.2
H14*80MF	UU02433	14-1.50	80	0.3
H14*90MF	UU02434	14-1.50	90	0.3
H14*100MF	UU02435	14-1.50	100	0.3
H14*120MF	UU02436	14-1.50	120	0.4
H16*30MF	UU02437	16-1.50	30	0.2
H16*40MF	UU02438	16-1.50	40	0.2
H16*50MF	UU02439	16-1.50	50	0.2
H16*60MF	UU02440	16-1.50	60	0.3
H16*70MF	UU02441	16-1.50	70	0.4
H16*80MF	UU02442	16-1.50	80	0.4
H16*90MF	UU02443	16-1.50	90	0.4
H16*100MF	UU02444	16-1.50	100	0.4
H16*120MF	UU02445	16-1.50	120	0.5
H16*140MF	UU02446	16-1.50	140	0.6
H16*160MF	UU02447	16-1.50	160	0.6

## Socket Head Bolts

Plain Steel



Order Number	Price Ref. #	Thread (mm)	Length (mm)	Wt (lbs)
SCC3*6M	UU02448	3-.50	6	0.01
SCC3*8M	UU02449	3-.50	8	0.01
SCC3*10M	UU02450	3-.50	10	0.01
SCC3*12M	UU02451	3-.50	12	0.01
SCC3*16M	UU02452	3-.50	16	0.01
SCC3*20M	UU02453	3-.50	20	0.01
SCC3*25M	UU02454	3-.50	25	0.01
SCC3*30M	UU02455	3-.50	30	0.01
SCC4*10M	UU02456	4-.70	10	0.01
SCC4*12M	UU02457	4-.70	12	0.01
SCC4*16M	UU02458	4-.70	16	0.01
SCC4*20M	UU02459	4-.70	20	0.01
SCC4*25M	UU02460	4-.70	25	0.01
SCC4*30M	UU02461	4-.70	30	0.01
SCC4*35M	UU02462	4-.70	35	0.01
SCC4*40M	UU02463	4-.70	40	0.01
SCC5*10M	UU02464	5-.80	10	0.01
SCC5*12M	UU02465	5-.80	12	0.01
SCC5*16M	UU02466	5-.80	16	0.01
SCC5*20M	UU02467	5-.80	20	0.01
SCC5*25M	UU02468	5-.80	25	0.01
SCC5*30M	UU02469	5-.80	30	0.01
SCC5*35M	UU02470	5-.80	35	0.01
SCC5*40M	UU02471	5-.80	40	0.01
SCC6*10M	UU02472	6-1.00	10	0.01
SCC6*12M	UU02473	6-1.00	12	0.01
SCC6*16M	UU02474	6-1.00	16	0.01
SCC6*20M	UU02475	6-1.00	20	0.01
SCC6*25M	UU02476	6-1.00	25	0.01
SCC6*30M	UU02477	6-1.00	30	0.01

Order Number	Price Ref. #	Thread (mm)	Length (mm)	Wt (lbs)
SCC6*35M	UU02478	6-1.00	35	0.01
SCC6*40M	UU02479	6-1.00	40	0.01
SCC6*45M	UU02480	6-1.00	45	0.02
SCC6*50M	UU02481	6-1.00	50	0.02
SCC6*55M	UU02482	6-1.00	55	0.02
SCC6*60M	UU02483	6-1.00	60	0.03
SCC8*16M	UU02484	8-1.25	16	0.02
SCC8*20M	UU02485	8-1.25	20	0.02
SCC8*25M	UU02486	8-1.25	25	0.03
SCC8*30M	UU02487	8-1.25	30	0.03
SCC8*40M	UU02488	8-1.25	40	0.04
SCC8*50M	UU02489	8-1.25	50	0.05
SCC8*60M	UU02490	8-1.25	60	0.06
SCC8*70M	UU02491	8-1.25	70	0.06
SCC10*16M	UU02492	10-1.50	16	0.04
SCC10*20M	UU02493	10-1.50	20	0.04
SCC10*25M	UU02494	10-1.50	25	0.05
SCC10*30M	UU02495	10-1.50	30	0.05
SCC10*40M	UU02496	10-1.50	40	0.07
SCC10*50M	UU02497	10-1.50	50	0.08
SCC10*60M	UU02498	10-1.50	60	0.09
SCC10*70M	UU02499	10-1.50	70	0.1
SCC12*25M	UU02500	12-1.75	25	0.07
SCC12*30M	UU02501	12-1.75	30	0.08
SCC12*40M	UU02502	12-1.75	40	0.1
SCC12*50M	UU02503	12-1.75	50	0.1
SCC12*55M	UU02504	12-1.75	55	0.1
SCC12*60M	UU02505	12-1.75	60	0.1
SCC12*70M	UU02506	12-1.75	70	0.1
SCC12*80M	UU02507	12-1.75	80	0.2
SCC12*90M	UU02508	12-1.75	90	0.2

Stainless Steel

SCC5*20MS	UU02509	5-.80	20	0.01
SCC5*30MS	UU02510	5-.80	30	0.01
SCC5*40MS	UU02511	5-.80	40	0.01
SCC6*20MS	UU02512	6-1.00	20	0.01
SCC8*40MS	UU02513	8-1.25	40	0.04
SCC8*50MS	UU02514	8-1.25	50	0.05

SCC8*60MS	UU02515	8-1.25	60	0.06
SCC8*70MS	UU02516	8-1.25	70	0.06
SCC10*50MS	UU02517	10-1.50	50	0.08
SCC10*60MS	UU02518	10-1.50	60	0.09
SCC10*70MS	UU02519	10-1.50	70	0.1
SCC10*80MS	UU02520	10-1.50	90	0.1

## Hex Nuts

Zinc Plated - Course Thread 6m and bigger Class 10



Order Number	Price Ref. #	Thread (mm)	Wt (lbs)
NC3M	UU02521	3-.50	0.01
NC4M	UU02522	4-.70	0.01
NC5M	UU02523	5-.80	0.01
NC6M	UU02524	6-1.00	0.01
NC8M	UU02525	8-1.25	0.01
NC10M	UU02526	10-1.50	0.02

Order Number	Price Ref. #	Thread (mm)	Wt (lbs)
NC12M	UU02527	12-1.75	0.03
NC14M	UU02528	14-2.00	0.04
NC16M	UU02529	16-2.00	0.06
NC18M	UU02530	18-1.50	0.09
NC20M	UU02531	20-2.50	0.1
NC24M	UU02532	24-3.00	0.2

Zinc Plated - Fine Thread

NF8M	UU02533	8-1.00	0.01
NF10M	UU02534	10-1.25	0.02
NF10M1	UU02535	10-1.00	0.02
NF12M	UU02536	12-1.50	0.03

NF14M	UU02537	14-1.50	0.04
NF16M	UU02538	16-1.50	0.06
NF28M	UU02539	28-2.00	0.2

## Lock Nuts

Zinc Plated



Order Number	Price Ref. #	Thread (mm)	Wt (lbs)
NNC4M	UU02540	4-.70	0.01
NNC5M	UU02541	5-.80	0.01
NNC6M	UU02542	6-1.00	0.01
NNC8M	UU02543	8-1.25	0.01

Order Number	Price Ref. #	Thread (mm)	Wt (lbs)
NNC10M	UU02544	10-1.50	0.02
NNC12M	UU02545	12-1.75	0.03
NNC14M	UU02546	14-2.00	0.04

## Flat Washers

Zinc Plated



Order Number	Price Ref. #	Diameter (mm)	Wt (lbs)
FW4M	UU02547	4	0.01
FW5M	UU02548	5	0.01
FW6M	UU02549	6	0.01
FW7M	UU02550	7	0.01

Order Number	Price Ref. #	Diameter (mm)	Wt (lbs)
FW8M	UU02551	8	0.01
FW10M	UU02552	10	0.01
FW12M	UU02553	12	0.01
FW14M	UU02554	14	0.01

Stainless Steel

FW5MS	UU02555	5	0.01
FW6MS	UU02556	6	0.01

FW8MS	UU02557	8	0.01
FW10MS	UU02558	10	0.01

## Lock Washers

Zinc Plated



Order Number	Price Ref. #	Diameter (mm)	Wt (lbs)
LW3M	UU02559	3	0.01
LW4M	UU02560	4	0.01
LW5M	UU02561	5	0.01
LW6M	UU02562	6	0.01

Order Number	Price Ref. #	Diameter (mm)	Wt (lbs)
LW7M	UU02563	7	0.01
LW8M	UU02564	8	0.01
LW10M	UU02565	10	0.01

## Threaded Rods

Zinc Plated



Order Number	Price Ref. #	Thread (mm)	Wt (lbs)
TR5*1M*.80M	UU02566	5-.80	0.8
TR6*1M*1.00M	UU02567	6-1.00	1.0
TR8*1M*1.25M	UU02568	8-1.25	1.3
TR10*1M*1.50M	UU02569	10-1.50	1.5

Order Number	Price Ref. #	Thread (mm)	Wt (lbs)
TR12*1M*1.75M	UU02570	12-1.75	1.8
TR14*1M*2.00M	UU02571	14-2.00	2.0
TR16*1M*2.00M	UU02572	16-2.00	2.0
TR20*1M*2.50M	UU02573	20-2.50	2.5

# ANCHORING BOLTS

## Stud Anchors

Zinc Plated



Order Number	Price Ref. #	Diameter (in)	Length (in)	Wt (lbs)
SA14*134	UU02574	1/4	1-3/4	0.03
SA14*214	UU02575	1/4	2-1/4	0.04
SA14*314	UU02576	1/4	3-1/4	0.04
SA38*214	UU02577	3/8	2-1/4	0.09
SA38*234	UU02578	3/8	2-3/4	0.1
SA38*3	UU02579	3/8	3	0.1
SA38*312	UU02580	3/8	3-1/2	0.1
SA38*334	UU02581	3/8	3-3/4	0.1
SA38*5	UU02582	3/8	5	0.2
SA12*234	UU02583	1/2	2-3/4	0.2
SA12*334	UU02584	1/2	3-3/4	0.2
SA12*412	UU02585	1/2	4-1/2	0.3
SA12*512	UU02586	1/2	5-1/2	0.3
SA12*7	UU02587	1/2	7	0.4
SA12*812	UU02588	1/2	8-1/2	0.4
SA58*312	UU02589	5/8	3-1/2	0.4
SA58*412	UU02590	5/8	4-1/2	0.4

Order Number	Price Ref. #	Diameter (in)	Length (in)	Wt (lbs)
SA58*5	UU02591	5/8	5	0.5
SA58*6	UU02592	5/8	6	0.5
SA58*7	UU02593	5/8	7	0.6
SA58*812	UU02594	5/8	8-1/2	0.7
SA58*10	UU02595	5/8	10	0.9
SA58*12	UU02596	5/8	12	0.1
SA34*414	UU02597	3/4	4-1/4	0.6
SA34*434	UU02598	3/4	4-3/4	0.7
SA34*512	UU02599	3/4	5-1/2	0.8
SA34*614	UU02600	3/4	6-1/4	0.8
SA34*7	UU02601	3/4	7	0.9
SA34*812	UU02602	3/4	8-1/2	1.1
SA34*10	UU02603	3/4	10	1.2
SA34*12	UU02604	3/4	12	1.3
SA1*6	UU02605	1	6	1.6
SA1*9	UU02606	1	9	2.2
SA1*12	UU02607	1	12	2.7

## Stainless Steel

SA14*214S	UU02608	1/4	2-1/4	0.04
SA14*314S	UU02609	1/4	3-1/4	0.04
SA38*214S	UU02610	3/8	2-1/4	0.1
SA38*234S	UU02611	3/8	2-3/4	0.1
SA38*312S	UU02612	3/8	3-1/2	0.1
SA38*5S	UU02613	3/8	5	0.2

SA12*234S	UU02614	1/2	2-3/4	0.2
SA12*334S	UU02615	1/2	3-3/4	0.2
SA12*412S	UU02616	1/2	4-1/2	0.3
SA12*512S	UU02617	1/2	5-1/2	0.3
SA34*614S	UU02618	3/4	6-1/4	0.8

## Hex Lock Bolts

Zinc Plated



Order Number	Price Ref. #	Diameter (in)	Length (in)	Wt (lbs)
LBH14*58	UU02619	1/4	5/8	0.02
LBH14*138	UU02620	1/4	1-3/8	0.03
LBH14*214	UU02621	1/4	2-1/4	0.03
LBH516*112	UU02622	5/16	1-1/2	0.04
LBH516*212	UU02623	5/16	2-1/2	0.05
LBH38*178	UU02624	3/8	1-7/8	0.07
LBH38*3	UU02625	3/8	3	0.1
LBH38*4	UU02626	3/8	4	0.1
LBH12*214	UU02627	1/2	2-1/4	0.2
LBH12*3	UU02628	1/2	3	0.2
LBH12*4	UU02629	1/2	4	0.2

Order Number	Price Ref. #	Diameter (in)	Length (in)	Wt (lbs)
LBH12*514	UU02630	1/2	5	0.3
LBH12*6	UU02631	1/2	6	0.3
LBH58*214	UU02632	5/8	2-1/4	0.3
LBH58*3	UU02633	5/8	3	0.3
LBH58*414	UU02634	5/8	4-1/4	0.3
LBH58*6	UU02635	5/8	6	0.5
LBH34*212	UU02636	3/4	2-1/2	0.3
LBH34*4	UU02637	3/4	4	0.5
LBH34*534	UU02638	3/4	5-3/4	0.7
LBH34*712	UU02639	3/4	7-1/2	0.9

FASTENING PRODUCTS

## Wedge Bolts

Zinc Plated



- OR (orange tip) wedge bolts use a regular ansi-drill bit
- Other wedge bolts use a “special” “wedge bit”

Order Number	Price Ref. #	Diameter (in)	Length (in)	Wt (lbs)
WB14*114	UU02640	1/4	1-1/4	0.03
WB14*134	UU02641	1/4	1-3/4	0.03
WB14*214	UU02642	1/4	2-1/4	0.04
WB14*3	UU02643	1/4	3	0.05
WB14*3OR	UU02644	1/4	3	0.05
WB38*134	UU02645	3/8	1-3/4	0.07
WB38*212	UU02646	3/8	2-1/2	0.1
WB38*3	UU02647	3/8	3	0.1
WB38*4	UU02648	3/8	4	0.1
WB38*4OR	UU02649	3/8	4	0.1
WB12*2	UU02650	1/2	2	0.2
WB12*212	UU02651	1/2	2	0.2
WB12*3	UU02652	1/2	3	0.2
WB12*4	UU02653	1/2	4	0.3
WB12*4OR	UU02654	1/2	4	0.3

Order Number	Price Ref. #	Diameter (in)	Length (in)	Wt (lbs)
WB12*5	UU02655	1/2	5	0.3
WB12*5OR	UU02656	1/2	5	0.3
WB12*6	UU02657	1/2	6	0.4
WB58*3	UU02658	5/8	3	0.3
WB58*4	UU02659	5/8	4	0.4
WB58*4OR	UU02660	5/8	4	0.4
WB58*5	UU02661	5/8	5	0.5
WB58*5OR	UU02662	5/8	5	0.5
WB58*6	UU02663	5/8	6	0.5
WB34*3	UU02664	3/4	3	0.5
WB34*4	UU02665	3/4	4	0.6
WB34*5	UU02666	3/4	5	0.7
WB34*6	UU02667	3/4	6	0.8
WB34*8	UU02668	3/4	8	1.0

## Tapcon

Hex Head Tapcon - TCH



- #14 sizes are stainless steel

Order Number	Price Ref. #	Thread (in)	Length (in)	Wt (lbs)
TCH316*114	UU02669	3/16	1-1/4	0.01
TCH316*134	UU02670	3/16	1-3/4	0.01
TCH316*214	UU02671	3/16	2-1/4	0.01
TCH316*234	UU02672	3/16	2-3/4	0.01
TCH316*314	UU02673	3/16	3-1/4	0.01
TCH316*334	UU02674	3/16	3-3/4	0.01
TCH316*4	UU02675	3/16	4	0.02
TCH14*114	UU02676	1/4	1-1/4	0.01
TCH14*134	UU02677	1/4	1-3/4	0.01
TCH14*214	UU02678	1/4	2-1/4	0.02
TCH14*234	UU02679	1/4	2-3/4	0.02

Order Number	Price Ref. #	Thread (in)	Length (in)	Wt (lbs)
TCH14*314	UU02680	1/4	3-1/4	0.03
TCH14*334	UU02681	1/4	3-3/4	0.03
TCH14*4	UU02682	1/4	4	0.03
TCH14*5	UU02683	1/4	5	0.04
TCH14*6	UU02684	1/4	6	0.05
TCH114S	UU02685	#14	1-1/4	0.01
TCH134S	UU02686	#14	1-3/4	0.02
TCH214S	UU02687	#14	2-1/4	0.02
TCH234S	UU02688	#14	2-3/4	0.03
TCH314S	UU02689	#14	3-1/4	0.03
TCH334S	UU02690	#14	4	0.04

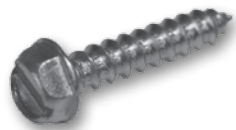
Flat Head Tapcon - TCF

Order Number	Price Ref. #	Thread (in)	Length (in)	Wt (lbs)
TCF316*114	UU02691	3/16	1-1/4	0.01
TCF316*134	UU02692	3/16	1-3/4	0.01
TCF316*214	UU02693	3/16	2-1/4	0.01
TCF316*234	UU02694	3/16	2-3/4	0.01
TCF316*314	UU02695	3/16	3-1/4	0.01
TCF316*334	UU02696	3/16	3-3/4	0.01
TCF316*4	UU02697	3/16	4	0.02
TCF14*114	UU02698	1/4	1-1/4	0.01
TCF14*134	UU02699	1/4	1-3/4	0.01
TCF14*214	UU02700	1/4	2-1/4	0.02
TCF14*234	UU02701	1/4	2-3/4	0.02

Order Number	Price Ref. #	Thread (in)	Length (in)	Wt (lbs)
TCF14*314	UU02702	1/4	3-1/4	0.03
TCF14*334	UU02703	1/4	3-3/4	0.03
TCF14*4	UU02704	1/4	4	0.03
TCF14*5	UU02705	1/4	5	0.04
TCF14*6	UU02706	1/4	6	0.05
TCF114S	UU02707	#14	1-1/4	0.01
TCF134S	UU02708	#14	1-3/4	0.02
TCF214S	UU02709	#14	2-1/4	0.02
TCF234S	UU02710	#14	2-3/4	0.03
TCF314S	UU02711	#14	3-1/4	0.03
TCF334S	UU02712	#14	3-3/4	0.04

## Hex Tapping Screws

Zinc Plated



Order Number	Price Ref. #	Thread (in)	Length (in)	Wt (lbs)
HT6*12	UU02713	#6	1/2	0.01
HT6*34	UU02714	#6	3/4	0.01
HT6*1	UU02715	#6	1	0.01
HT8*12	UU02716	#8	1/2	0.01
HT8*58	UU02717	#8	5/8	0.01
HT8*34	UU02718	#8	3/4	0.01
HT8*1	UU02719	#8	1	0.01
HT8*114	UU02720	#8	1-1/4	0.01
HT8*112	UU02721	#8	1-1/2	0.01
HT8*2	UU02722	#8	2	0.01
HT10*38	UU02723	#10	3/8	0.01
HT10*12	UU02724	#10	1/2	0.01
HT10*58	UU02725	#10	5/8	0.01
HT10*34	UU02726	#10	3/4	0.01
HT10*1	UU02727	#10	1	0.01
HT10*114	UU02728	#10	1-1/4	0.01
HT10*112	UU02729	#10	1-1/2	0.01
HT10*2	UU02730	#10	2	0.02
HT10*212	UU02731	#10	2-1/2	0.02
HT10*3	UU02732	#10	3	0.02
HT12*12	UU02733	#12	1/2	0.01
HT12*34	UU02734	#12	3/4	0.01
HT12*1	UU02735	#12	1	0.01

Order Number	Price Ref. #	Thread (in)	Length (in)	Wt (lbs)
HT12*114	UU02736	#12	1-1/4	0.01
HT12*112	UU02737	#12	1-1/2	0.01
HT12*2	UU02738	#12	2	0.02
HT12*212	UU02739	#12	2-1/2	0.02
HT12*3	UU02740	#12	3	0.02
HT14*12	UU02741	#14	1/2	0.01
HT14*34	UU02742	#14	3/4	0.01
HT14*1	UU02743	#14	1	0.01
HT14*114	UU02744	#14	1-1/4	0.02
HT14*112	UU02745	#14	1-1/2	0.02
HT14*2	UU02746	#14	2	0.02
HT14*212	UU02747	#14	2-1/2	0.02
HT14*3	UU02748	#14	3	0.03
HT516*12	UU02749	5/16	1/2	0.03
HT516*34	UU02750	5/16	3/4	0.03
HT516*1	UU02751	5/16	1	0.03
HT516*114	UU02752	5/16	1-1/4	0.04
HT516*112	UU02753	5/16	1-1/2	0.04
HT516*2	UU02754	5/16	2	0.05
HT38*34	UU02755	3/8	3/4	0.04
HT38*1	UU02756	3/8	1	0.04
HT38*112	UU02757	3/8	1-1/2	0.06
HT38*2	UU02758	3/8	2	0.07

## Pan Head Tapping Screws

Zinc Plated - Combo (slotted/phillips)



Order Number	Price Ref. #	Thread (in)	Length (in)	Wt (lbs)
PT4*14	UU02759	#4	1/4	0.01
PT4*38	UU02760	#4	3/8	0.01
PT4*12	UU02761	#4	1/2	0.01
PT4*58	UU02762	#4	5/8	0.01
PT4*34	UU02763	#4	3/4	0.01
PT4*1	UU02764	#4	1	0.01
PT6*38	UU02765	#6	3/8	0.01
PT6*12	UU02766	#6	1/2	0.01
PT6*58	UU02767	#6	5/8	0.01
PT6*34	UU02768	#6	3/4	0.01
PT6*1	UU02769	#6	1	0.01
PT6*114	UU02770	#6	1-1/4	0.01
PT6*112	UU02771	#6	1-1/2	0.01
PT6*2	UU02772	#6	2	0.01
PT7*38	UU02773	#7	3/8	0.01
PT7*12	UU02774	#7	1/2	0.01
PT7*58	UU02775	#7	5/8	0.01
PT7*34	UU02776	#7	3/4	0.01
PT7*1	UU02777	#7	1	0.01
PT8*38	UU02778	#8	3/8	0.01
PT8*12	UU02779	#8	1/2	0.01
PT8*58	UU02780	#8	5/8	0.01
PT8*34	UU02781	#8	3/4	0.01
PT8*1	UU02782	#8	1	0.01
PT8*114	UU02783	#8	1-1/4	0.01
PT8*112	UU02784	#8	1-1/2	0.01
PT8*2	UU02785	#8	2	0.01
PT8*212	UU02786	#8	2-1/2	0.01

Order Number	Price Ref. #	Thread (in)	Length (in)	Wt (lbs)
PT10*38	UU02787	#10	3/8	0.01
PT10*12	UU02788	#10	1/2	0.01
PT10*58	UU02789	#10	5/8	0.01
PT10*34	UU02790	#10	3/4	0.01
PT10*1	UU02791	#10	1	0.01
PT10*114	UU02792	#10	1-1/4	0.01
PT10*112	UU02793	#10	1-1/2	0.01
PT10*134	UU02794	#10	1-3/4	0.01
PT10*2	UU02795	#10	2	0.02
PT10*212	UU02796	#10	2-1/2	0.02
PT10*3	UU02797	#10	3	0.02
PT12*12	UU02798	#12	1/2	0.01
PT12*34	UU02799	#12	3/4	0.01
PT12*1	UU02800	#12	1	0.01
PT12*114	UU02801	#12	1-1/4	0.01
PT12*112	UU02802	#12	1-1/2	0.01
PT12*2	UU02803	#12	2	0.02
PT12*212	UU02804	#12	2-1/2	0.02
PT12*3	UU02805	#12	3	0.02
PT14*12	UU02806	#14	1/2	0.01
PT14*34	UU02807	#14	3/4	0.01
PT14*1	UU02808	#14	1	0.01
PT14*114	UU02809	#14	1-1/4	0.02
PT14*112	UU02810	#14	1-1/2	0.02
PT14*2	UU02811	#14	2	0.02
PT14*212	UU02812	#14	2-1/2	0.02
PT14*3	UU02813	#14	3	0.03

## Stainless Steel - Phillips

PT4*12S	UU02814	#4	1/2	0.01
PT4*34S	UU02815	#4	3/4	0.01
PT4*1S	UU02816	#4	1	0.01

PT6*38S	UU02817	#6	3/8	0.01
PT6*12S	UU02818	#6	1/2	0.01
PT6*34S	UU02819	#6	3/4	0.01

## Pan Head Tapping Screws

Stainless Steel - Phillips (Continued)

Order Number	Price Ref. #	Thread (in)	Length (in)	Wt (lbs)
PT6*1S	UU02820	#6	1	0.01
PT6*114S	UU02821	#6	1-1/4	0.01
PT6*112S	UU02822	#6	1-1/2	0.01
PT8*38S	UU02823	#8	3/8	0.01
PT8*12S	UU02824	#8	1/2	0.01
PT8*34S	UU02825	#8	3/4	0.01
PT8*1S	UU02826	#8	1	0.01
PT8*114S	UU02827	#8	1-1/4	0.01
PT8*112S	UU02828	#8	1-1/2	0.01
PT8*2S	UU02829	#8	2	0.01
PT8*212S	UU02830	#8	2-1/2	0.01
PT8*3S	UU02831	#8	3	0.01
PT10*12S	UU02832	#10	1/2	0.01
PT10*58S	UU02833	#10	5/8	0.01
PT10*34S	UU02834	#10	3/4	0.01
PT10*1S	UU02835	#10	1	0.01
PT10*114S	UU02836	#10	1-1/4	0.01
PT10*112S	UU02837	#10	1-1/2	0.01
PT10*2S	UU02838	#10	2	0.02

Order Number	Price Ref. #	Thread (in)	Length (in)	Wt (lbs)
PT10*212S	UU02839	#10	2-1/2	0.02
PT10*3S	UU02840	#10	3	0.02
PT10*4S	UU02841	#10	4	0.02
PT12*12S	UU02842	#12	1/2	0.01
PT12*34S	UU02843	#12	3/4	0.01
PT12*1S	UU02844	#12	1	0.01
PT12*114S	UU02845	#12	1-1/4	0.01
PT12*112S	UU02846	#12	1-1/2	0.01
PT12*2S	UU02847	#12	2	0.02
PT12*212S	UU02848	#12	2-1/2	0.02
PT12*3S	UU02849	#12	3	0.02
PT14*12S	UU02850	#14	1/2	0.01
PT14*34S	UU02851	#14	3/4	0.01
PT14*1S	UU02852	#14	1	0.01
PT14*114S	UU02853	#14	1-1/4	0.02
PT14*112S	UU02854	#14	1-1/2	0.02
PT14*2S	UU02855	#14	2	0.02
PT14*212S	UU02856	#14	2-1/2	0.02
PT14*3S	UU02857	#14	3	0.03

## Flat Head Tapping Screws

Zinc Plated - Phillips

Order Number	Price Ref. #	Thread (in)	Length (in)	Wt (lbs)
FT4*38	UU02858	#4	3/8	0.01
FT4*12	UU02859	#4	1/2	0.01
FT4*58	UU02860	#4	5/8	0.01
FT4*34	UU02861	#4	3/4	0.01
FT4*1	UU02862	#4	1	0.01
FT6*38	UU02863	#6	3/8	0.01
FT6*12	UU02864	#6	1/2	0.01
FT6*58	UU02865	#6	5/8	0.01
FT6*34	UU02866	#6	3/4	0.01
FT6*1	UU02867	#6	1	0.01
FT6*114	UU02868	#6	1-1/4	0.01
FT6*112	UU02869	#6	1-1/2	0.01
FT6*134	UU02870	#6	1-3/4	0.01
FT6*2	UU02871	#6	2	0.01
FT8*12	UU02872	#8	1/2	0.01
FT8*34	UU02873	#8	3/4	0.01
FT8*1	UU02875	#8	1	0.01
FT8*114	UU02876	#8	1-1/4	0.01
FT8*112	UU02877	#8	1-1/2	0.01
FT8*134	UU02878	#8	1-3/4	0.01
FT8*2	UU02879	#8	2	0.01
FT8*212	UU02880	#8	2-1/2	0.01
FT8*3	UU02881	#8	3	0.01



Order Number	Price Ref. #	Thread (in)	Length (in)	Wt (lbs)
FT10*12	UU02882	#10	1/2	0.01
FT10*58	UU02883	#10	5/8	0.01
FT10*34	UU02884	#10	3/4	0.01
FT10*1	UU02885	#10	1	0.01
FT10*114	UU02886	#10	1-1/4	0.01
FT10*112	UU02887	#10	1-1/2	0.01
FT10*134	UU02888	#10	1-3/4	0.01
FT10*2	UU02889	#10	2	0.02
FT10*212	UU02890	#10	2-1/2	0.02
FT10*3	UU02891	#10	3	0.02
FT12*34	UU02892	#12	3/4	0.01
FT12*1	UU02893	#12	1	0.01
FT12*114	UU02894	#12	1-1/4	0.01
FT12*112	UU02895	#12	1-1/2	0.01
FT12*2	UU02896	#12	2	0.02
FT12*212	UU02897	#12	2-1/2	0.02
FT12*3	UU02898	#12	3	0.02
FT14*34	UU02899	#14	3/4	0.01
FT14*1	UU02900	#14	1	0.01
FT14*112	UU02901	#14	1-1/2	0.02
FT14*2	UU02902	#14	2	0.02
FT14*212	UU02903	#14	2-1/2	0.02
FT14*3	UU02904	#14	3	0.03

## Lag Screws

Zinc Plated

Order Number	Price Ref. #	Thread (in)	Length (in)	Wt (lbs)
LG14*1	UU02905	1/4	1	0.02
LG14*114	UU02906	1/4	1-1/4	0.03
LG14*112	UU02907	1/4	1-1/2	0.03
LG14*2	UU02908	1/4	2	0.03
LG14*212	UU02909	1/4	2-1/2	0.04
LG14*3	UU02910	1/4	3	0.05



Order Number	Price Ref. #	Thread (in)	Length (in)	Wt (lbs)
LG14*312	UU02911	1/4	3-1/2	0.06
LG14*4	UU02912	1/4	4	0.06
LG14*412	UU02913	1/4	4-1/2	0.07
LG14*5	UU02914	1/4	5	0.07
LG14*6	UU02915	1/4	6	0.09
LG516*1	UU02916	5/16	1	0.03

## Lag Screws

Zinc Plated (Continued)

Order Number	Price Ref. #	Thread (in)	Length (in)	Wt (lbs)
LG516*114	UU02917	5/16	1-1/4	0.04
LG516*112	UU02918	5/16	1-1/2	0.04
LG516*2	UU02919	5/16	2	0.05
LG516*212	UU02920	5/16	2-1/2	0.06
LG516*3	UU02921	5/16	3	0.07
LG516*312	UU02922	5/16	3-1/2	0.09
LG516*4	UU02923	5/16	4	0.09
LG516*412	UU02924	5/16	4-1/2	0.1
LG516*5	UU02925	5/16	5	0.1
LG516*6	UU02926	5/16	6	0.1
LG38*1	UU02927	3/8	1	0.04
LG38*114	UU02928	3/8	1-1/4	0.05
LG38*112	UU02929	3/8	1-1/2	0.06
LG38*2	UU02930	3/8	2	0.07
LG38*212	UU02931	3/8	2-1/2	0.08
LG38*3	UU02932	3/8	3	0.1
LG38*312	UU02933	3/8	3-1/2	0.1
LG38*4	UU02934	3/8	4	0.1
LG38*412	UU02935	3/8	4-1/2	0.2
LG38*5	UU02936	3/8	5	0.2
LG38*6	UU02937	3/8	6	0.2
LG38*7	UU02938	3/8	7	0.2
LG38*8	UU02939	3/8	8	0.3
LG38*9	UU02940	3/8	9	0.3

Order Number	Price Ref. #	Thread (in)	Length (in)	Wt (lbs)
LG38*10	UU02941	3/8	10	0.3
LG38*12	UU02942	3/8	12	0.4
LG12*112	UU02943	1/2	1-1/2	0.08
LG12*2	UU02944	1/2	2	0.1
LG12*212	UU02945	1/2	2-1/2	0.1
LG12*3	UU02946	1/2	3	0.2
LG12*312	UU02947	1/2	3-1/2	0.2
LG12*4	UU02948	1/2	4	0.2
LG12*412	UU02949	1/2	4-1/2	0.3
LG12*5	UU02950	1/2	5	0.3
LG12*6	UU02951	1/2	6	0.4
LG12*7	UU02952	1/2	7	0.4
LG12*8	UU02953	1/2	8	0.5
LG12*9	UU02954	1/2	9	0.6
LG12*10	UU02955	1/2	10	0.6
LG12*12	UU02956	1/2	12	0.7
LG12*14	UU02957	1/2	14	0.8
LG12*16	UU02958	1/2	16	0.9
LG58*4	UU02959	5/8	4	0.4
LG58*512	UU02960	5/8	5-1/2	0.6
LG58*6	UU02961	5/8	6	0.6
LG34*4	UU02962	3/4	4	0.6
LG34*5	UU02963	3/4	5	0.7
LG34*8	UU02964	3/4	8	1.1
LG34*12	UU02965	3/4	12	1.6

## Galvanized

LG14*1G	UU03094	1/4	1	0.1
LG14*114G	UU03095	1/4	1-1/4	0.1
LG14*112G	UU03096	1/4	1-1/2	0.1
LG14*2G	UU03097	1/4	2	0.1
LG14*212G	UU03098	1/4	2-1/2	0.1
LG14*3G	UU03099	1/4	3	0.1
LG14*312G	UU03100	1/4	3-1/2	0.1
LG14*4G	UU03101	1/4	4	0.1
LG14*5G	UU03102	1/4	5	0.1
LG14*6G	UU03103	1/4	6	0.1
LG516*1G	UU03104	5/16	1	0.1
LG516*114G	UU03105	5/16	1-1/4	0.1
LG516*112G	UU03106	5/16	1-1/2	0.1
LG516*2G	UU03107	5/16	2	0.1
LG516*212G	UU03108	5/16	2-1/2	0.1
LG316*3G	UU03109	5/16	3	0.1
LG516*312G	UU03110	5/16	3-1/2	0.1
LG516*4G	UU03111	5/16	4	0.1
LG516*5G	UU03112	5/16	5	0.1
LG516*6G	UU03113	5/16	6	0.2
LG38*1G	UU03114	3/8	1	0.1
LG38*114G	UU03115	3/8	1-1/4	0.1
LG38*112G	UU03116	3/8	1-1/2	0.1
LG38*2G	UU02966	3/8	2	0.1
LG38*212G	UU03117	3/8	2-1/2	0.1
LG38*3G	UU02967	3/8	3	0.1
LG38*4G	UU02968	3/8	4	0.1
LG38*5G	UU02969	3/8	5	0.2
LG38*6G	UU02970	3/8	6	0.2
LG38*7G	UU02971	3/8	7	0.2
LG38*8G	UU02972	3/8	8	0.3
LG38*10G	UU03118	3/8	10	0.3

LG12*112G	UU03119	1/2	1-1/2	0.1
LG12*2G	UU03120	1/2	2	0.2
LG12*212G	UU03121	1/2	2-1/2	0.2
LG12*3G	UU02973	1/2	3	0.2
LG12*4G	UU02974	1/2	4	0.2
LG12*5G	UU02975	1/2	5	0.3
LG12*6G	UU02976	1/2	6	0.4
LG12*7G	UU02977	1/2	7	0.4
LG12*8G	UU02978	1/2	8	0.5
LG12*9G	UU03122	1/2	9	0.5
LG12*10G	UU03123	1/2	10	0.5
LG12*12G	UU02979	1/2	12	0.7
LG12*14G	UU03124	1/2	14	0.7
LG58*2G	UU03125	5/8	2	0.2
LG58*3G	UU03126	5/8	3	0.3
LG58*4G	UU03127	5/8	4	0.4
LG58*5G	UU03128	5/8	5	0.4
LG58*6G	UU03129	5/8	6	0.5
LG58*7G	UU03130	5/8	7	0.6
LG58*8G	UU03131	5/8	8	0.6
LG58*10G	UU03132	5/8	10	0.8
LG58*12G	UU03133	5/8	12	0.9
LG34*3G	UU03134	3/4	3	0.4
LG34*4G	UU03135	3/4	4	0.5
LG34*5G	UU03136	3/4	5	0.6
LG34*6G	UU03137	3/4	6	0.7
LG34*7G	UU03138	3/4	7	0.9
LG34*8G	UU03139	3/4	8	0.9
LG34*10G	UU03140	3/4	10	1.1
LG34*12G	UU03141	3/4	12	1.3

## Self-drilling Tek Screws

Hex Head - Stalgard Coated (Galvanized)



Order Number	Price Ref. #	Thread (in)	Length (in)	Wt (lbs)
TK6*12H1 - zinc	UU02980	6-20	1/2	0.01
TK8*12H2	UU02981	8-18	1/2	0.01
TK8*34H2	UU02982	8-18	3/4	0.01
TK10*34H3	UU02983	10-16	3/4	0.01
TK10*1H3	UU02984	10-16	1	0.01
TK10*114H3	UU02985	10-16	1-1/4	0.01
TK10*112H3	UU02986	10-16	1-1/2	0.01
TK12*34H3	UU02987	12-14	3/4	0.01
TK12*1H3	UU02988	12-14	1	0.01

Order Number	Price Ref. #	Thread (in)	Length (in)	Wt (lbs)
TK12*114H5	UU02989	12-14	1-1/4	0.01
TK12*114H3	UU02990	12-14	1-1/4	0.01
TK12*112H3	UU02991	12-14	1-1/2	0.02
TK12*2H5	UU02992	12-14	2	0.02
TK14*34H3	UU02993	1/4-14	3/4	0.02
TK14*1H3	UU02994	1/4-14	1	0.02
TK14*114H3	UU02995	1/4-14	1-1/4	0.02
TK14*112H3	UU02996	1/4-14	1-1/2	0.02
TK14*2H3	UU02997	1/4-14	2	0.03

Flat Head - Stalgard Coated (Galvanized)

TK10*1716P3	UU02998	10	14/9	0.01
TK11*378P4	UU02999	11	3-7/8	0.01
TK12-24*2P4	UU03000	12-24	2	0.02
TK12*212P4	UU03001	12-24	2-1/2	0.02

TK14*212P4	UU03002	1/4-14	2-1/2	0.03
TK14*234P4	UU03003	1/4-14	2-3/4	0.03
TK14*3P4	UU03004	1/4-14	3	0.03

Modified Truss Head - Zinc Plated

TKT8*12	UU03005	8-18	1/2	0.01
TKT8*34	UU03006	8-18	3/4	0.01
TKT8*1	UU03007	8-18	1	0.01

TKT8*114	UU03008	8-18	1-1/4	0.01
TKT8*158	UU03009	8-18	1-5/8	0.01

## Eye Screws

Zinc Plated



Order Number	Price Ref. #	Thread (in)	Length (in)	Load (lbs)	Wt (lbs)
N119123	UU03010	#14	1-1/16	5	0.01
N119073	UU03011	#12	1-3/16	10	0.01
N119032	UU03012	#10	1-3/8	25	0.01

Order Number	Price Ref. #	Thread (in)	Length (in)	Load (lbs)	Wt (lbs)
N119255	UU03013	#8	1-5/8	30	0.02
N119214	UU03014	#6	1-15/16	50	0.03
N119180	UU03015	#4	2-3/16	65	0.04

Stainless Steel

N220475	UU03016	#8	1-5/8	40	0.02
N220467	UU03017	#4	2-1/4	75	0.04

N220459	UU03018	#2	2-5/8	120	0.07
N220442	UU03019	#0	2-7/8	150	0.1

## Lag Eye Screws

Zinc Plated



Order Number	Price Ref. #	Thread (in)	Length (in)	Load (lbs)	Wt (lbs)
N220665	UU03020	1/4	3-3/4	120	0.07
N220673	UU03021	1/4	5	120	0.09
N220681	UU03022	5/16	4	175	0.1

Order Number	Price Ref. #	Thread (in)	Length (in)	Load (lbs)	Wt (lbs)
N220707	UU03023	3/8	4-1/2	230	0.2
N220715	UU03024	3/8	8	230	0.3
N220723	UU03025	7/16	5-1/4	320	0.3

Stainless Steel

N220475	UU03016	#8	1-5/8	40	0.02
N220467	UU03017	#4	2-1/4	75	0.04
N220459	UU03018	#2	2-5/8	120	0.07
N220442	UU03019	#0	2-7/8	150	0.1

N220772	UU03030	1/4	3-3/4	120	0.07
N220780	UU03031	1/4	5	120	0.09
N220798	UU03032	5/16	4	190	0.1
N220806	UU03033	3/8	4-1/2	275	0.2

Galvanized with shoulder

SCEB250X200	UU03034	1/4	2	500	0.05
SCEB312X225	UU03035	5/16	2-1/4	800	0.1
SCEB375X250	UU03036	3/8	2-1/2	1200	0.1

SCEB500X325	UU03037	1/2	3-1/4	2200	0.3
SCEB625X400	UU03038	5/8	4	3500	0.7
SCEB750X450	UU03039	3/4	4-1/2	5200	1.1

## Hook Screws

Zinc Plated

Order Number	Price Ref. #	Thread (in)	Length (in)	Load (lbs)	Wt (lbs)
N220863	UU03040	1/4	4-1/4	60	0.08
N220871	UU03041	5/16	4-1/2	125	0.1
N220889	UU03042	3/8	4-7/8	150	0.2



Order Number	Price Ref. #	Thread (in)	Length (in)	Load (lbs)	Wt (lbs)
N220897	UU03043	3/8	8	150	0.3
N221002	UU03044	3/8	10	150	0.3

Stainless Steel

N220814	UU03045	1/4	4-1/4	50	0.08
N220822	UU03046	3/8	4-7/8	220	0.2

## Ceiling Hooks

Zinc Plated

Order Number	Price Ref. #	Thread (in)	Length (in)	Load (lbs)	Wt (lbs)
N220517	UU03047	#4	3-7/8	60	0.06
N220491	UU03048	#2	2	75	0.1

