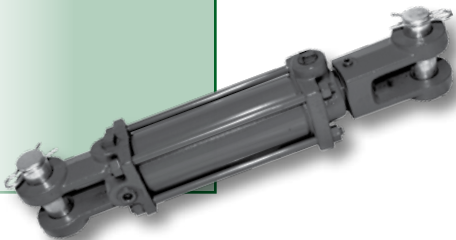


## Hydraulic Cylinders

2", 2-1/2", 3", 3-1/2" & 4" Bore Cylinders



- Premium quality hydraulic cylinders manufactured in Canada
- Precision finished skive and burnished heavy wall steel tubing for extended seal and cylinder life
- 1045 high strength steel, hard chrome plated shaft provides extended cylinder life in harsh applications

### Force Exerted By Hydraulic Cylinders

Bore (in)	Rod Dia. (in)	1500 PSI		2000 PSI		2500 PSI	
		Push	Pull	Push	Pull	Push	Pull
2	1.13	4712	3221	6283	4295	7854	5369
2.5	1.13	7363	5872	9818	7829	12272	9787
2.5	1.25	7363	5522	9818	7363	12272	9204
3	1.25	10603	8762	14137	11683	17672	14604
3	1.50	10603	7952	14137	10603	17672	13254
3.5	1.25	14432	12591	19242	16788	24053	20985
3.5	1.50	14432	11781	19242	15708	24053	19635
4	1.25	18850	17009	25133	22678	31416	28348
4	1.50	18850	16199	25133	21599	31416	26998

### 2" Bore

Order Number	Price Ref. #	Bore (in)	Stroke (in)	Rod Dia (in)	Pin to Pin Center (in)		Pin Dia (in)	Wt (lbs)
					Retracted	Extended		
20TL04	JJ00001	2	4.00	1.13	14-1/4	18-1/4	1	17.0
20TL06	JJ00002	2	6.00	1.13	16-1/4	22-1/4	1	18.0
20TL08 »	JJ00003	2	8.00	1.13	20-1/4	28-1/4	1	20.0
20TL10	JJ00004	2	10.00	1.13	20-1/4	30-1/4	1	21.0
20TL12	JJ00005	2	12.00	1.13	22-1/4	34-1/4	1	22.0
20TL14	JJ00006	2	14.00	1.13	24-1/4	38-1/4	1	24.0
20TL16	JJ00007	2	16.00	1.13	26-1/4	42-1/4	1	25.0
20TL18	JJ00008	2	18.00	1.13	28-1/4	46-1/4	1	26.0
20TL24	JJ00009	2	24.00	1.13	34-1/4	58-1/4	1	30.0
20TL30	JJ00010	2	30.00	1.13	40-1/4	70-1/4	1	34.0
20TL36	JJ00011	2	36.00	1.13	46-1/4	82-1/4	1	38.0

» ASAE Specifications

### 2-1/2" Bore

25TL04	JJ00012	2.5	4.00	1.13	14-1/4	18-1/4	1	18.0
25TL06	JJ00013	2.5	6.00	1.13	16-1/4	22-1/4	1	20.0
25TL08 »	JJ00014	2.5	8.00	1.13	20-1/4	28-1/4	1	22.0
25TL10	JJ00015	2.5	10.00	1.13	20-1/4	30-1/4	1	23.0
25TL12	JJ00016	2.5	12.00	1.13	22-1/4	34-1/4	1	24.0
25TL16	JJ00017	2.5	16.00	1.13	26-1/4	42-1/4	1	28.0
25TL18	JJ00018	2.5	18.00	1.25	28-1/4	46-1/4	1	31.0
25TL24	JJ00019	2.5	24.00	1.25	34-1/4	58-1/4	1	35.0
25TL36	JJ00020	2.5	36.00	1.25	46-1/4	82-1/4	1	45.0

» ASAE Specifications

### 3" Bore

30TL08 »	JJ00021	3	8.00	1.25	20-1/4	28-1/4	1	28.0
30TL10	JJ00022	3	10.00	1.25	20-1/4	30-1/4	1	30.0
30TL12	JJ00023	3	12.00	1.25	22-1/4	34-1/4	1	32.0
30TL14	JJ00024	3	14.00	1.25	24-1/4	38-1/4	1	34.0
30TL16	JJ00025	3	16.00	1.25	26-1/4	42-1/4	1	36.0
30TL18	JJ00026	3	18.00	1.25	28-1/4	46-1/4	1	39.0
30TL24	JJ00027	3	24.00	1.50	34-1/4	58-1/4	1	48.0
30TL30	JJ00028	3	30.00	1.50	40-1/4	70-1/4	1	55.0

» ASAE Specifications

### 3-1/2" Bore

Order Number	Price Ref. #	Bore (in)	Stroke (in)	Rod Dia (in)	Pin to Pin Center (in)		Pin Dia (in)	Wt (lbs)
					Retracted	Extended		
35TL08 »	JJ00029	3.5	8.00	1.25	20-1/4	28-1/4	1	36.0
35TL10	JJ00030	3.5	10.00	1.25	20-1/4	30-1/4	1	38.0
35TL12	JJ00031	3.5	12.00	1.25	22-1/4	34-1/4	1	41.0
35TL14	JJ00032	3.5	14.00	1.25	24-1/4	38-1/4	1	43.0
35TL16	JJ00033	3.5	16.00	1.25	26-1/4	42-1/4	1	46.0
35TL18	JJ00034	3.5	18.00	1.25	28-1/4	46-1/4	1	51.0
35TL24	JJ00035	3.5	24.00	1.50	34-1/4	58-1/4	1	59.0

» ASAE Specifications

### 4" Bore

40TL08 »	JJ00036	4	8.00	1.25	20-1/4	28-1/4	1	43.0
40TL10	JJ00037	4	10.00	1.25	34-1/4	58-1/4	1	45.0
40TL12	JJ00038	4	12.00	1.25	34-1/4	58-1/4	1	48.0
40TL14	JJ00039	4	14.00	1.25	34-1/4	58-1/4	1	50.0
40TL16	JJ00040	4	16.00	1.25	26-1/4	42-1/4	1	53.0
40TL18	JJ00041	4	18.00	1.25	28-1/4	46-1/4	1	59.0
40TL24	JJ00042	4	24.00	1.50	34-1/4	58-1/4	1	68.0

» ASAE Specifications

## Cylinder Replacement Parts



### Seal Repair Kits

Order Number	Price Ref. #	Bore (in)	Rod Dia (in)	Description	Wt (lbs)
RK20L112	JJ00043	2	1.125	Up to 30" stroke	0.07
RK25L112	JJ00044	2.5	1.125	Up to 16" stroke	0.08
RK25L125	JJ00045	2.5	1.25	18" stroke and up	0.08
RK30L125	JJ00046	3	1.25	Up to 20" stroke	0.08
RK30L150	JJ00047	3	1.50	24" stroke and up	0.09
RK35L125	JJ00048	3.5	1.25	Up to 16" stroke	0.09
RK35L150	JJ00049	3.5	1.50	18" stroke and up	0.1
RK40L125	JJ00050	4	1.25	Up to 16" stroke	0.1
RK40L150	JJ00051	4	1.50	18" to 24" stroke	0.1



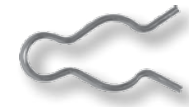
### Cylinder Pins

Order Number	Price Ref. #	Pin Dia (in)	Usable Length	Overall Length	Description	Wt (lbs)
01544	JJ00052	1	2-3/4	3-1/2	With 2 clip pins	0.8
01545	JJ00053	1	3-1/4	3-7/8	With 2 clip pins	0.9



### Hydraulic Clip Pins

Order Number	Price Ref. #	Pin Dia (in)	Overall Length (in)	Wt (lbs)
CCP17	JJ00054	0.105	2.07	0.01
CCP234	JJ00055	0.177	2.75	0.04



### Rod End Clevises

Order Number	Price Ref. #	Thread Size (in)	Pin Dia (in)	Wt (lbs)
492650	JJ00056	1-1/8	1	1.9
492652	JJ00057	1-1/4	1	2.9
492656	JJ00058	1-1/2	1	3.9



### Stroke Control Spacer Kits

Order Number	Price Ref. #	Description	Wt (lbs)
30099 »	JJ00059	Fits shaft sizes 1-1/8 & 1-1/4	1.5
30098 »	JJ00060	Fits shaft sizes 1-3/8 & 1-1/2	1.5



» Sets contain 3/4, 1, 1-1/4, & 1-1/2" segments