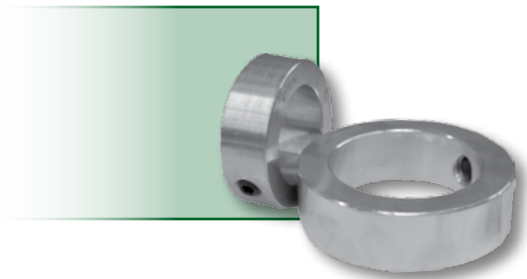




Solid Shaft Collars

Zinc Plated & Stainless Steel Shaft Collars



- Economical solid shaft collars w/ single set screw locking
- Zinc plated carbon steel is corrosion resistant and durable
- Stainless steel is corrosion resistant and will not rust to the shaft

Zinc Plated Shaft Collars

Order Number	Price Ref. #	Bore ID (in)	OD (in)	Width (in)	Wt (lbs)
0188P	OO00001	3/16	7/16	1/4	0.01
0250P	OO00002	1/4	1/2	9/32	0.01
0313P	OO00003	5/16	5/8	5/16	0.02
0375P	OO00004	3/8	3/4	3/8	0.03
0438P	OO00005	7/16	7/8	7/16	0.05
0500P	OO00006	1/2	1	7/16	0.07
0563P	OO00007	9/16	1	7/16	0.07
0625P	OO00008	5/8	1-1/8	1/2	0.09
0688P	OO00009	11/16	1-1/4	9/16	0.1
0750P	OO00010	3/4	1-1/4	9/16	0.1
0813P	OO00011	13/16	1-5/16	9/16	0.1
0875P	OO00012	7/8	1-1/2	9/16	0.2
0938P	OO00013	15/16	1-5/8	5/8	0.2
1000P	OO00014	1	1-5/8	5/8	0.2
1063P	OO00015	1-1/16	1-3/4	5/8	0.3
1125P	OO00016	1-1/8	1-3/4	5/8	0.3
1188P	OO00017	1-3/16	2	11/16	0.4
1250P	OO00018	1-1/4	2	11/16	0.4
1313P	OO00019	1-5/16	2-1/8	11/16	0.4
1375P	OO00020	1-3/8	2-1/8	3/4	0.4
1438P	OO00021	1-7/16	2-1/4	3/4	0.5
1500P	OO00022	1-1/2	2-1/4	3/4	0.5

Stainless Steel Shaft Collars

0250PS	OO00045	1/4	1/2	9/32	0.01
0375PS	OO00046	3/8	3/4	3/8	0.03
0500PS	OO00047	1/2	1	7/16	0.07
0625PS	OO00048	5/8	1-1/8	1/2	0.09
0750PS	OO00049	3/4	1-1/4	9/16	0.1
0875PS	OO00050	7/8	1-1/2	9/16	0.2
1000PS	OO00051	1	1-5/8	5/8	0.2

Order Number	Price Ref. #	Bore ID (in)	OD (in)	Width (in)	Wt (lbs)
1563P	OO00023	1-9/16	2-1/2	13/16	0.7
1625P	OO00024	1-5/8	2-1/2	13/16	0.7
1688P	OO00025	1-11/16	2-1/2	13/16	0.7
1750P	OO00026	1-3/4	2-3/4	7/8	0.9
1813P	OO00027	1-13/16	2-3/4	7/8	0.9
1875P	OO00028	1-7/8	2-3/4	7/8	0.9
1938P	OO00029	1-15/16	3	7/8	1.0
2000P	OO00030	2	3	7/8	1.0
2125P	OO00031	2-1/8	3	7/8	1.1
2188P	OO00032	2-3/16	3-1/4	15/16	1.1
2250P	OO00033	2-1/4	3-1/4	15/16	1.1
2313P	OO00034	2-5/16	3-1/4	15/16	1.1
2375P	OO00035	2-3/8	3-1/4	15/16	1.4
2438P	OO00036	2-7/16	3-1/2	1	1.4
2500P	OO00037	2-1/2	3-1/2	1	1.4
2563P	OO00038	2-9/16	3-3/4	1	1.9
2625P	OO00039	2-5/8	4	1-1/8	2.3
2688P	OO00040	2-11/16	4	1-1/8	2.3
2750P	OO00041	2-3/4	4	1-1/8	2.3
2875P	OO00042	2-7/8	4-1/4	1-1/8	2.4
2938P	OO00043	2-15/16	4-1/4	1-1/8	2.4
3000P	OO00044	3	4-1/4	1-1/8	2.4

1188PS	OO00052	1-3/16	2	11/16	0.4
1250PS	OO00053	1-1/4	2	11/16	0.4
1375PS	OO00054	1-3/8	2-1/8	3/4	0.4
1438PS	OO00055	1-7/16	2-1/4	3/4	0.5
1500PS	OO00056	1-1/2	2-1/4	3/4	0.5
1750PS	OO00057	1-3/4	2-3/4	7/8	0.9
2000PS	OO00058	2	3	7/8	1.0



Split Shaft Collars

Single & Double Split Shaft Collars



- Single & double split shaft collars produced with black oxide steel
- Split collars provide a tight fit using an allen head bolt. No set screws to mar the shaft
- Double split collar allows for easier installation

Single Split Shaft Collars

Order Number	Price Ref. #	Bore ID (in)	OD (in)	Width (in)	Wt (lbs)
SSC12	OO00059	1/2	1-1/8	13/32	0.01
SSC34	OO00060	3/4	1-1/2	1/2	0.03
SSC78	OO00061	7/8	1-5/8	1/2	0.2
SSC1	OO00062	1	1-3/4	1/2	0.2
SSC114	OO00063	1-1/4	2-1/16	1/2	0.4

Order Number	Price Ref. #	Bore ID (in)	OD (in)	Width (in)	Wt (lbs)
SSC138	OO00064	1-3/8	2-1/4	9/16	0.4
SSC112	OO00065	1-1/2	2-3/8	9/16	0.5
SSC158	OO00066	1-5/8	2-5/8	11/16	0.7
SSC134	OO00067	1-3/4	2-3/4	11/16	0.9
SSC2	OO00068	2	3	11/16	1.0

Double Split Shaft Collars

Order Number	Price Ref. #	Bore ID (in)	OD (in)	Width (in)	Wt (lbs)
DSC12	OO00069	1/2	1-1/8	13/32	0.01
DSC58	OO00070	5/8	1-15/16	7/16	0.09
DSC34	OO00071	3/4	1-1/2	1/2	0.1
DSC78	OO00072	7/8	1-5/8	1/2	0.2
DSC1	OO00073	1	1-3/4	1/2	0.2
DSC118	OO00074	1-1/8	1-7/8	1/2	0.3
DSC114	OO00075	1-1/4	2-1/16	1/2	0.4
DSC138	OO00076	1-3/8	2-1/4	9/16	0.4

Order Number	Price Ref. #	Bore ID (in)	OD (in)	Width (in)	Wt (lbs)
DSC1716	OO00077	1-7/16	2-1/4	9/16	0.4
DSC112	OO00078	1-1/2	2-3/8	9/16	0.5
DSC158	OO00079	1-5/8	2-5/8	11/16	0.7
DSC134	OO00080	1-3/4	2-3/4	11/16	0.9
DSC178	OO00081	1-7/8	2-7/8	11/16	0.9
DSC11516	OO00082	1-15/16	3	11/16	1.0
DSC2	OO00083	2	3	11/16	1.0