



Weasler®

*AFTERMARKET
PRODUCT GUIDE*

CLUTCHES

CLUTCHES

NORTH AMERICAN

Weasler 14,35,44,55

Interchanges with:

Neapco 2600 Series and

Walterscheid 1480 Series

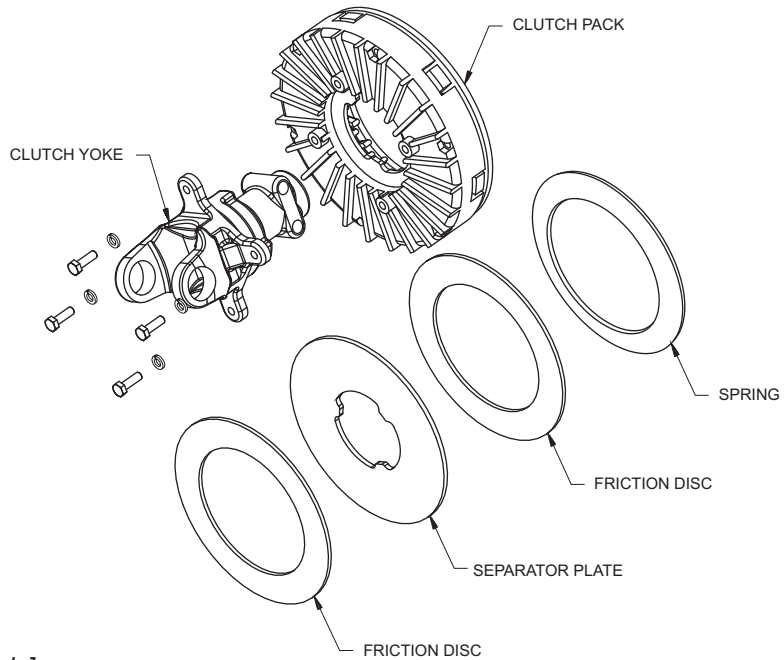
METRIC

Interchanges with:

Bondioli and Pavesi, 4, 5, 6, and

8 Series and Walterscheid 2300,

2400 and 2500 Series



[For use on implement end of driveline only]

The drawing illustrates the components of the **TORQMASTER**. Each component of the exploded view is identified by an eight-digit stock number to ensure identification.

Number Identification Examples:

570-9000
 _____ Torque in•lbs
 _____ Diameter of Clutch Pak

817-3506
 _____ 6 Spline
 _____ 35 Series
 _____ Clamp Yoke for Friction Clutch
 _____ Implement Yoke

825-4422
 _____ 1 3/8" Round Bore*
 _____ 44 Series
 _____ Round Bore for Friction Clutch
 _____ Implement Yoke

*1/16th Increments

821-1406
 _____ 6 Spline
 _____ 14 Series
 _____ Auto-Lok for Overrunning Clutch
 _____ Implement Yoke

818-8406
 _____ 6 Spline
 _____ By/Py 4 Series and W/S 2300 Series
 _____ Interchanges with both By/Py and W/S
 _____ Clamp Yoke for Overrunning Clutch
 _____ Implement Yoke

970-7000
 _____ Diameter of Clutch Pak
 _____ Friction Disc

990-7000
 _____ Diameter of Clutch Pak
 _____ Separator Plate

NOTE: Overrunning Clutch Paks must be mated with overrunning yokes

Features And Benefits

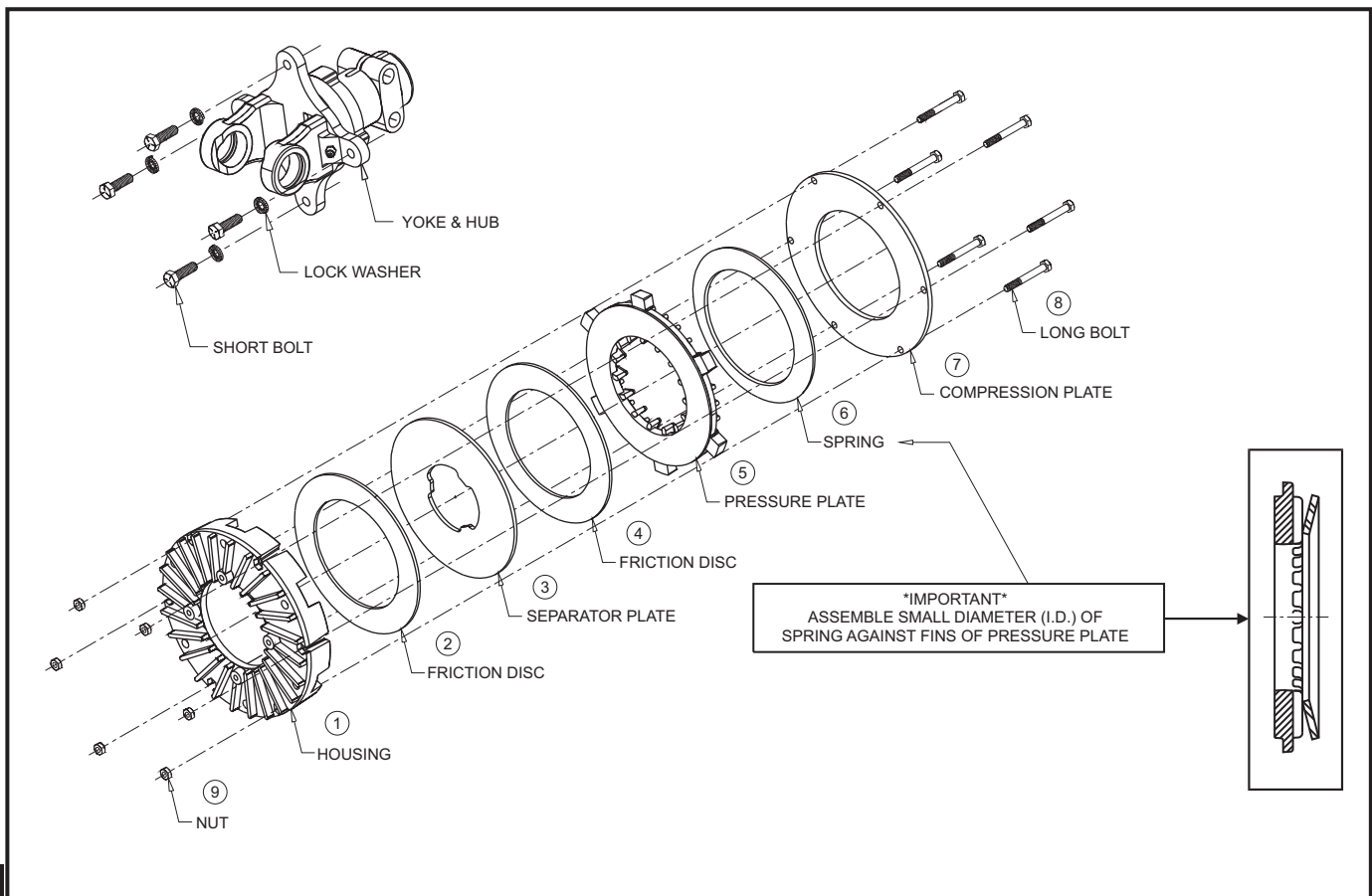
- Superior performance
- Long life
- Isolates/dissipates heat
- “User Friendly” - easy to service
- Easy assembly with 1/2” wrench
- Free motion - ease of hook-up
- Minimum adjustment required
- Auto-Lok available
- Replacement clutch for most farm implements*
- Torque setting from 9,000 in•lbs to 21,000 in•lbs
- Overrunning feature also available
- Modular construction covers a wide variety of applications
- Applications for the TorQmaster Modular Clutch:
 - Spreaders
 - Mower conditioners
 - Flail shredders
 - Balers
 - Mixers
 - Rotary cutters
 - Grain carts
 - Snowblowers

* For use on implement end of driveline only

Instructions for ordering the **TORQMASTER** Clutch

- Determine the driveline series using *Transparency Identification System* for either North American or Metric applications (see Pages 41 and 84)
- Identify the connecting shaft size and the method of attachment (eg: clamp, bolt, keyway)
- Obtain torque setting from owner/operator manual - if available
- If torque setting is not available, use the following Clutch Pak Selection Guide (Pages 173 and 174) as a guideline for selecting the proper clutch pak
 - Order clutch yoke and clutch pak separately by stock number
 - For installation, attach clutch yoke to the driveline first, then mount the clutch pak to the clutch yoke
 - Use the modular clutch on the implement end of the driveline only
 - If the implement input connection guard is removed for service, re-install the guard before using the machine
 - Some implements (eg: mower conditioner, flail shredder) require an overrunning feature incorporated into the clutch. If the replacement clutch requires this feature, order the appropriate overrunning modular clutch and overrunning clutch yoke.

Assembly Instructions for the **TORQMASTER** Modular Clutch



CLUTCHES

Run-In of the **TORQMASTER** Modular Clutch (Instructions)

If the clutch has not been operated for (1) season we recommend the following:

TOOLS REQUIRED:

(1) 1/2" box wrench or socket

1. Make sure the tractor is off and the PTO is disengaged.
2. Disconnect the driveline from the tractor.
3. Locate the bolts on the O.D. of the clutch pak. Loosen the bolts until all are finger tight, then tighten each one half a turn.
4. Attach the implement to the tractor at the hitch pin, and the driveline to the tractor PTO.
5. Turn the tractor on. Engage the PTO clutch and run for a few seconds, or until the clutch visibly smokes.
6. Disengage the tractor PTO and shut off the tractor. Keep clear of the machine until all parts stop moving.
7. Disconnect the driveline from the tractor.
8. Tighten the bolts on the O.D. of the clutch pak until the compression plate is in full contact with the housing.
9. If the clutch contains an integral overrunning clutch, make sure the clutch spins freely in one direction.

Spreader

Friction Clutch Stock Number	Overrunning Clutch Stock Number	540 RPM in•lb•torque	1000 RPM in•lb•torque
Capacity: Less than 240 Bushels or 150 cu.ft.			
57012000	57112000	12000	
Capacity: Between 241-400 Bushels or 151 - 250 cu.ft.			
57012000	57112000		12000
57015000	57115000	15000	
Capacity: Between 401-560 Bushels or 251 - 350 cu.ft.			
57015000	57115000		15000
57018000	57118000	18000	
Capacity: Greater than 560 Bushels or 350 cu.ft.			
57018000	57118000		18000
57018000	57118000	18000	

Mixer

Friction Clutch Stock Number	Overrunning Clutch Stock Number	540 RPM in•lb•torque	1000 RPM in•lb•torque
Capacity: Less than 240 Bushels or 150 cu.ft.			
57012000	57112000	12000	
Capacity: Between 241-400 Bushels or 151 - 250 cu.ft.			
57012000	57112000		12000
57015000	57115000	15000	
Capacity: Between 401-560 Bushels or 251 - 350 cu.ft.			
57015000	57115000		15000
57018000	57118000	18000	
Capacity: Greater than 560 Bushels or 350 cu.ft.			
57018000	57118000		18000
57018000	57118000	18000	

Snowblowers

Friction Clutch Stock Number	540 RPM in•lb•torque	1000 RPM in•lb•torque
Width of Cut: Less than 60".		
57012000		12000
57015000	15000	
Width of Cut: 61" - 70"		
57015000		15000
57018000	18000	
Width of Cut: 71" - 80"		
57018000		18000
57018000	18000	
Width of Cut: 81" - 90"		
57018000	N/A	18000
Width of Cut: Greater than 90"		
57018000	N/A	18000

Mower Conditioner

Friction Clutch Stock Number	Overrunning Clutch Stock Number	540 RPM in•lb•torque	1000 RPM in•lb•torque
Sickle Bar - less than 10 feet			
57012000	57112000	12000	
Sickle Bar - 10 - 13 feet			
57012000	57112000		12000
57015000	57115000	15000	
Sickle Bar - 14 - 17 feet			
57015000	57115000		15000
57018000	57118000	18000	

Friction Clutch Stock Number	Overrunning Clutch Stock Number	540 RPM in•lb•torque	1000 RPM in•lb•torque
Rotary Disk - less than 10 feet			
57012000	57112000		12000
Rotary Disk - 11 - 13 feet			
57015000	57115000		15000
Rotary Disk - 14 - 17 feet			
57018000	57118000		18000

Rotary Cutter

1 Clutch/Machine			
Friction Clutch Stock Number	Overrunning Clutch Stock Number	540 RPM in•lb•torque	1000 RPM in•lb•torque
Deck Width - 4 - 7 feet			
570-9000	571-9000		9000
57012000	57112000	12000	
Deck Width - 8 - 13 feet			
57012000	57112000		12000
57015000	57115000	15000	
Deck Width - 14 - 16 feet			
57015000	57115000		15000
57018000	57118000	18000	
Deck Width - 17 - 20 feet			
57018000	57118000		18000
57018000	57118000	18000	
Deck Width - larger than 20 feet			
57018000	57118000		18000

Rotary Cutter cont.

1 Clutch/Section

Friction Clutch Stock Number	Overrunning Clutch Stock Number	540 RPM in•lb•torque	1000 RPM in•lb•torque
Section Width - 4 - 6 feet			
570-9000	571-9000		9000
57012000	57112000	12000	
Section Width - greater than 6 feet			
57012000	57112000		12000
57015000	57115000	15000	

Flail Shredder

Friction Clutch Stock Number	Overrunning Clutch Stock Number	540 RPM in•lb•torque	1000 RPM in•lb•torque
Less than 10 feet			
57015000	57115000		15000
57018000	57118000	18000	
10 - 15 feet			
57018000	57118000		18000
57018000	57118000	18000	
Greater than 15 feet			
57018000			18000

Round Baler

Friction Clutch Stock Number	Overrunning Clutch Stock Number	540 RPM in•lb•torque	1000 RPM in•lb•torque
Bale Weight - less than 600 lbs.			
57012000	57112000	12000	
Bale Weight - 600 - 1500 lbs.			
57012000	57112000		12000
57015000	57115000	15000	
Bale Weight - 1501 - 2500 lbs.			
57012000	57112000		12000
57018000	57118000	18000	

Grain Cart

Friction Clutch Stock Number	Overrunning Clutch Stock Number	540 RPM in•lb•torque	1000 RPM in•lb•torque
57012000	57112000	12000	
Up to 750 Bushels			
57015000	57115000	15000	
Above 750 Bushels			
57018000	57118000	18000	

*If you have an implement that does NOT appear in the above Clutch Pak Selection Guide, use the following chart as a general guideline for selecting the proper Clutch Pak.

North American	Metric	Stock Number
14 Series	Bondioli & Pavesi 4 Series Walterscheid 2300 Series	57012000
35 Series	Bondioli & Pavesi 5 Series Walterscheid 2400 Series	57015000
44 Series	Bondioli & Pavesi 6 & 7 Series Walterscheid II Series	57018000
55 Series	Bondioli & Pavesi 8 Series Walterscheid 2500 & 2600 Series	57018000

* See Page 171 for Clutch Pak ordering information

Clutch Pak Product Information

Adjustment detail - 7" and 9" Clutch Paks

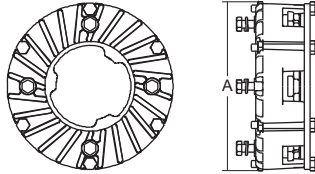
- No spring adjustment required
- Tighten bolts to 30 ft-lbs (max)

You will find some overlap within an implement category in the *Clutch Pak Selection Guide*. The operator will generally know if he has a heavy duty or light duty application. If in doubt, always protect the driveline...refer to the "general guideline for selecting proper clutch pak" on this page.

NORTH AMERICAN SECTION

TORQMASTER

Clutch Paks 7" & 9"

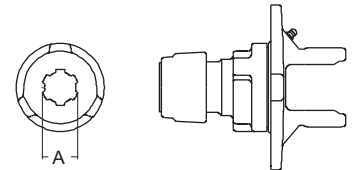


Clutch Pak Stock Number	Overrunning Clutch Stock Number	in•lbs	Dim. "A"
570-9000	571-9000	9000	7"
57012000	57112000	12000	7"
57015000	57115000	15000	7"
57018000	57118000	18000	7"
59010000	59110000	10000	9.36"
59015000	59115000	15000	9.36"
59018000	59118000	18000	9.36"
59021000	59121000	21000	9.36"

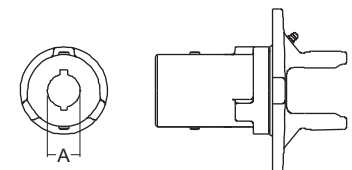
NOTE!

Torqmaster clutch paks must be used with mating Torqmaster yoke that has same flange configuration only.

14 Series continued...

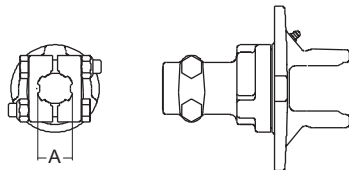


Auto-Lok Yoke Stock Number	Overrunning Auto-Lok Yoke Stock Number	Dim. "A" Bore
820-1406	821-1406	1 3/8" x 6 Spl.
820-1420	821-1420	1 3/4" x 20 Spl.
820-1421	821-1421	1 3/8" x 21 Spl.



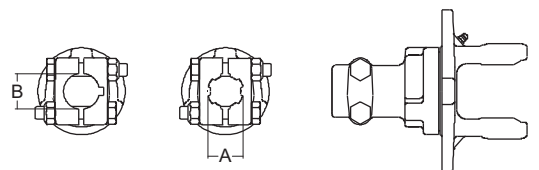
Round Bore Yoke Stock Number	Overrunning Round Bore Yoke Stock Number	Dim. "A" Bore w / Keyway & Set-screw
825-1420	826-1420	1 1/4" Rd.
825-1422	826-1422	1 3/8" Rd.

14 Series

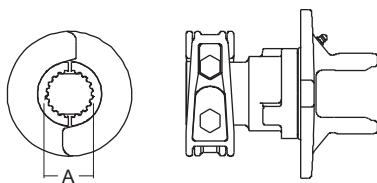


Clamp Yoke Stock Number	Overrunning Clamp Yoke Stock Number	Dim. "A" Bore
817-1406	818-1406	1 3/8" x 6 Spl.
817-1421	818-1421	1 3/8" x 21 Spl.

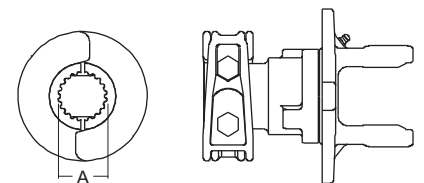
35 Series



Clamp Yoke Stock Number	Overrunning Clamp Yoke Stock Number	Dim. "A" Bore	Dim. "B" Bore w / Keyway
817-3506	818-3506	1 3/8" x 6 Spl.	
817-3521	818-3521	1 3/8" x 21 Spl.	
817-3524	818-3524		1 1/2" Rd.



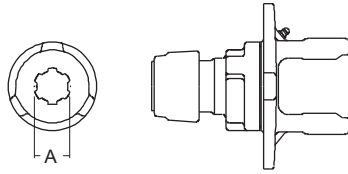
Clamp Yoke Stock Number	Overrunning Clamp Yoke Stock Number	Dim. "A" Bore
817-1420	818-1420	1 3/4" x 20 Spl.



Clamp Yoke Stock Number	Overrunning Clamp Yoke Stock Number	Dim. "A" Bore
817-3520	818-3520	1 3/4" x 20 Spl.

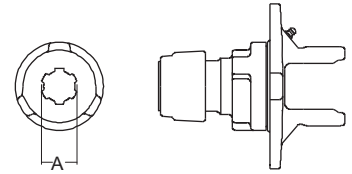
Clutch Components

35 Series continued...

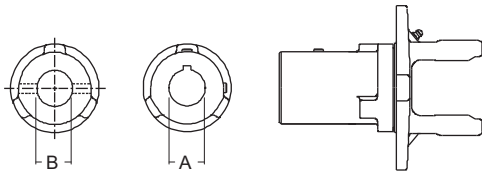


Auto-Lok Yoke Stock Number	Overrunning Auto-Lok Yoke Stock Number	Dim. "A" Bore
820-3506	821-3506	1 3/8" x 6 Spl.
820-3520	821-3520	1 3/4" x 20 Spl.
820-3521	821-3521	1 3/8" x 21 Spl.

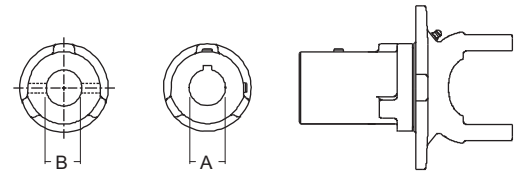
44 Series continued...



Auto-Lok Yoke Stock Number	Overrunning Auto-Lok Yoke Stock Number	Dim. "A" Bore
820-4406	821-4406	1 3/8" x 6 Spl.
820-4420	821-4420	1 3/4" x 20 Spl.
820-4421	821-4421	1 3/8" x 21 Spl.



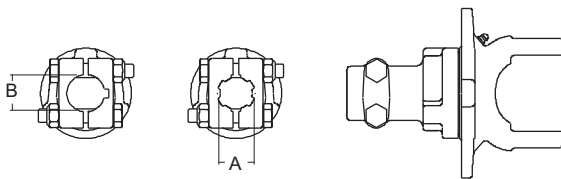
Round Bore Yoke Stock Number	Overrunning Round Bore Yoke Stock Number	Dim. "A" Bore w / Keyway Set-screw	Dim. "B" Bore w / 3/8" Pinhole
825-3520	826-3520	1 1/4" Rd. Dbl.KW	
825-3522	826-3522	1 3/8" Rd.	
825-3524	826-3524	1 1/2" Rd.	
827-3528	826-3528		1 3/4" Rd.



Round Bore Yoke Stock Number	Overrunning Round Bore Yoke Stock Number	Dim. "A" Bore w / Keyway & Set-screw	Dim. "B" Bore w / 3/8" Pinhole
825-4420	826-4420	1 1/4" Rd.	
825-4422	826-4422	1 3/8" Rd.	
827-4432	Not Available		2" Rd.

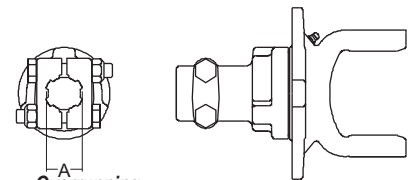
CLUTCHES

44 Series

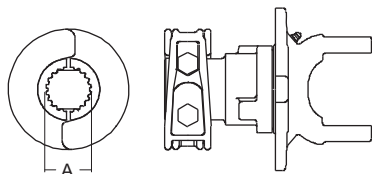


Clamp Yoke Stock Number	Overrunning Clamp Yoke Stock Number	Dim. "A"	Dim. "B" w / Keyway
817-4406	818-4406	1 3/8" x 6 Spl.	
817-4421	818-4421	1 3/8" x 21 Spl.	
817-4424	818-4424		1 1/2" Rd.

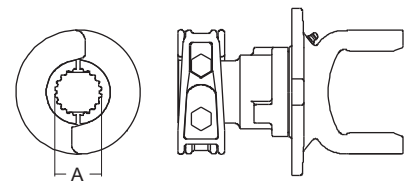
55 Series



Clamp Yoke Stock Number	Overrunning Clamp Yoke Stock Number	Dim. "A" Bore
817-5506	818-5506	1 3/8" x 6 Spl.
817-5521	818-5521	1 3/8" x 21 Spl.

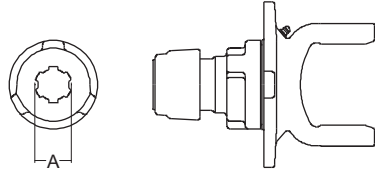


Clamp Yoke Stock Number	Overrunning Clamp Yoke Stock Number	Dim. "A" Bore
817-4420	818-4420	1 3/4" x 20 Spl.

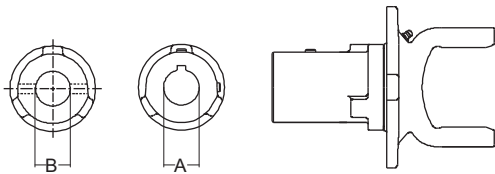


Clamp Yoke Stock Number	Overrunning Clamp Yoke Stock Number	Dim. "A" Bore
817-5520	818-5520	1 3/4" x 20 Spl.
817-5527	818-5527	1 3/4" x 27 Spl.

55 Series continued...



Auto-Lok Yoke Stock Number	Overrunning Auto-Lok Yoke Stock Number	Dim. "A" Bore
820-5506	821-5506	1 3/8" x 6 Spl.
820-5520	821-5520	1 3/4" x 20 Spl.
820-5521	821-5521	1 3/8" x 21 Spl.



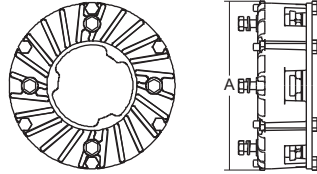
Round Bore Yoke Stock Number	Overrunning Round Bore Yoke Stock Number	Dim. "A" Bore w / Keyway & Set-screw	Dim. "B" Bore w / 3/8" Pinhole
825-5522	826-5522	1 3/8" Rd.	
825-5528	826-5528	1 3/4" Rd.	
827-5532	Not Available		2" Rd.

Clutch Components

METRIC SECTION

TORQMASTER

Clutch Paks 7" & 9"



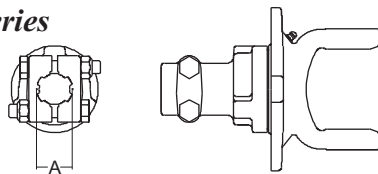
Clutch Pak Stock Number	Overrunning Clutch Stock Number	in•lbs	Dim. "A"
570-9000	571-9000	9000	7"
57012000	57112000	12000	7"
57015000	57115000	15000	7"
57018000	57118000	18000	7"
59010000	59110000	10000	9.36"
59015000	59115000	15000	9.36"
59018000	59118000	18000	9.36"
59021000	59121000	21000	9.36"

NOTE!

Torqmaster clutch paks must be used with mating Torqmaster yoke that has same flange configuration only

Interchanges with:

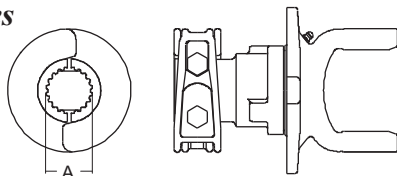
Walterscheid 1480 Series Neapco 2600 Series



Clamp Yoke Stock Number	Overrunning Clamp Yoke Stock Number	Dim. "A" Bore
817-2606	818-2606	1 3/8" x 6 Spl.
817-2621	818-2621	1 3/8" x 21 Spl.

Interchanges with:

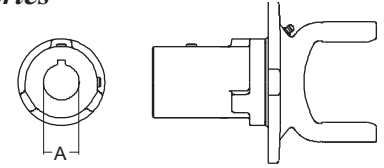
Walterscheid 1480 Series Neapco 2600 Series



Clamp Yoke Stock Number	Overrunning Clamp Yoke Stock Number	Dim. "A" Bore
817-2620	818-2620	1 3/4" x 20 Spl.

Interchanges with:

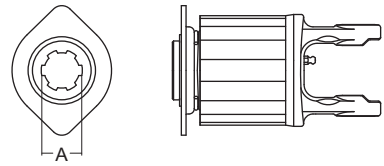
Walterscheid 1480 Series Neapco 2600 Series



Round Bore Yoke Stock Number	Overrunning Round Bore Yoke Stock Number	Dim. "A" Bore w / Keyway & Set-screw
825-2622	826-2622	1 3/8" Rd.

Interchanges with:

Bondioli & Pavesi 2 Series Walterscheid 2200 Series



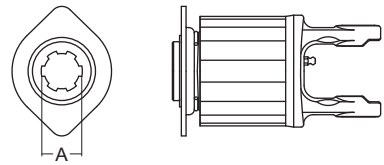
Ratchet Clutch

Dim. "A" Bore w / Keyway & Clutch Setting

Stock Number	Type	Clutch Setting	Set-screw
570-8206	Spring Lock	2600 in-lbs	1 3/8" x 6 Spl.

Interchanges with:

Bondioli & Pavesi 3 Series Walterscheid I Series



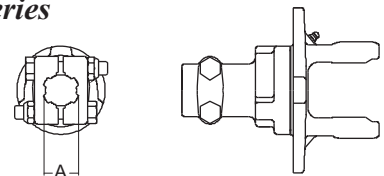
Ratchet Clutch

Dim. "A" Bore w / Keyway & Set-screw

Stock Number	Type	Clutch Setting	Set-screw
570-6306	Spring Lock	5300 in-lbs	1 3/8" x 6 Spl.

Interchanges with:

Bondioli & Pavesi 4 Series Walterscheid 2300 Series



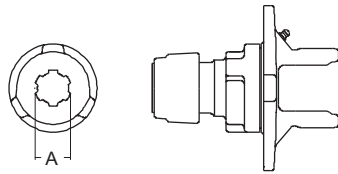
Clamp Yoke Stock Number	Overrunning Clamp Yoke Stock Number	Dim. "A" Bore w / Keyway & Set-screw
817-8406	818-8406	1 3/8" x 6 Spl.
817-8420	818-8420	1 3/4" x 20 Spl.
817-8421	818-8421	1 3/8" x 21 Spl.

CLUTCHES

Clutch Components

Interchanges with:

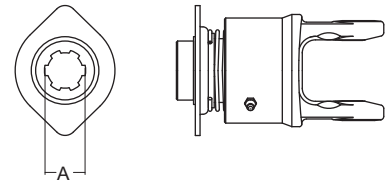
Bondioli & Pavesi 4 Series
Walterscheid 2300 Series



Auto Lok Stock Number	Overrunning Stock Number	Dim. "A" Bore
820-8406	N/A	1 3/8" x 6 Spl.

Interchanges with:

Bondioli & Pavesi 4 Series
Walterscheid 2300 Series

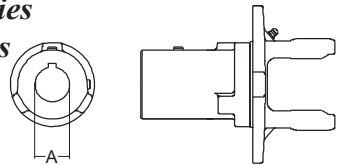


Overrunning Clutch
(Free-Wheel Clockwise)

Stock Number	Type	Clutch Setting	Dim. "A" Bore
580-8406	Spring Lock	N/A	1 3/8" x 6 Spl.

Interchanges with:

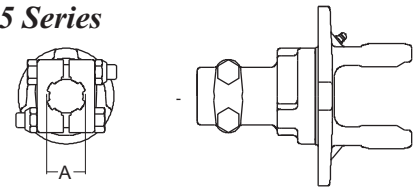
Bondioli & Pavesi 4 Series
Walterscheid 2300 Series



Round Bore Yoke Stock Number	Overrunning Round Bore Yoke Stock Number	Dim. "A" Bore w / Keyway & Set-screw
825-8422	826-8422	1 3/8" Rd.

Interchanges with:

Bondioli & Pavesi 5 Series

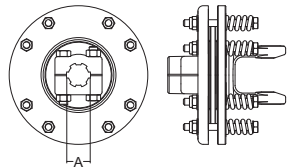


Clamp Yoke Stock Number	Overrunning Clamp Yoke Stock Number	Dim. "A" Bore
817-6506	818-6506	1 3/8" x 6 Spl.
817-6520*	818-6520	1 3/4" x 20 Spl.
817-6521	818-6521	1 3/8" x 21 Spl.

* For correct picture please refer to Walterscheid 1480 Series 817-2620

Interchanges with:

Bondioli & Pavesi 4 Series
Walterscheid 2300 Series

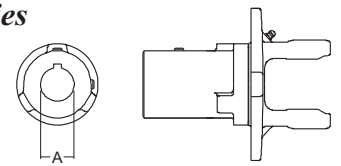


Friction Clutch

Stock Number	Type	Clutch Setting	Dim. "A" Bore
560-8406	Dbl. Clamp	8000 in-lbs	1 3/8" x 6 Spl.

Interchanges with:

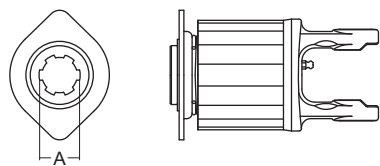
Bondioli & Pavesi 5 Series



Round Bore Yoke Stock Number	Overrunning Round Bore Yoke Stock Number	Dim. "A" Bore w / Keyway & Set-screw
825-6522	826-6522	1 3/8" Rd.
825-6524	826-6524	1 1/2" Rd.

Interchanges with:

Bondioli & Pavesi 4 Series
Walterscheid 2300 Series

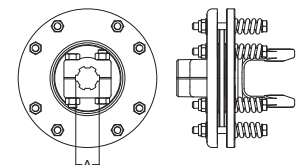


Ratchet Clutch

Stock Number	Type	Clutch Setting	Dim. "A" Bore
570-8406	Spring Lock	8000 in-lbs	1 3/8" x 6 Spl.

Interchanges with:

Bondioli & Pavesi 5 Series



Friction Clutch

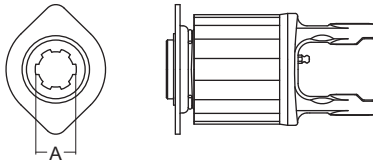
Stock Number	Type	Clutch Setting	Dim. "A" Bore
560-6506	Dbl. Clamp	8000 in-lbs	1 3/8" x 6 Spl.

CLUTCHES

Clutch Components

Interchanges with:

Bondioli & Pavesi 5 Series



Ratchet Clutch

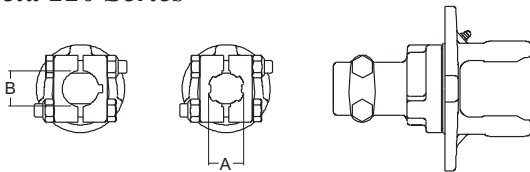
(3 & 4 Row)

Stock Number	Type	Clutch Setting	Dim. "A" Bore
570-6506	Spring Lock	8000 in-lbs	1 3/8" x 6 Spl.

Interchanges with:

Bondioli & Pavesi 6 Series

Walterscheid 220 Series



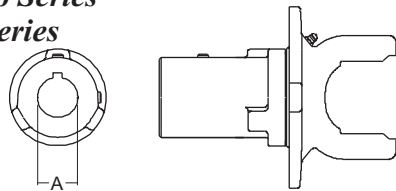
Clamp Yoke Stock Number	Overrunning Clamp Yoke Stock Number	Dim. "A" Bore	Dim. "B" Bore w / Keyway & Set-screw
817-8606	818-8606	1 3/8" x 6 Spl.	
*817-8620	818-8620	1 3/4" x 20 Spl.	
817-8621	818-8621	1 3/8" x 21 Spl.	
817-8624	818-8624		1 1/2" Rd.
817-8628	818-8628	1 3/4" x 6 Spl.	

* For correct picture refer to Walterscheid 2400 Series - 817-7620

Interchanges with:

Bondioli & Pavesi 6 Series

Walterscheid 220 Series

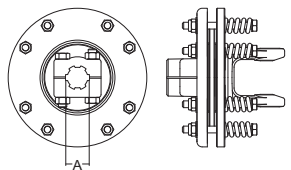


Round Bore Yoke Stock Number	Overrunning Round Bore Yoke Stock Number	Dim. "A" Bore w / Keyway & Set-screw
825-8622	826-8622	1 3/8" Rd.
825-8624	826-8624	1 1/2" Rd.

Interchanges with:

Bondioli & Pavesi 6 Series

Walterscheid 220 Series



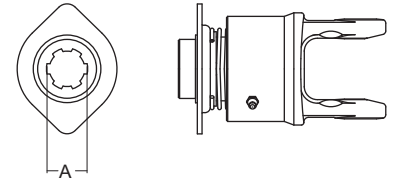
Friction Clutch

Stock Number	Type	Clutch Setting	Dim. "A" Bore
560-8606	Dbl. Clamp	11,125 in-lbs	1 3/8" x 6 Spl.

Interchanges with:

Bondioli & Pavesi 6 Series

Walterscheid 220 Series



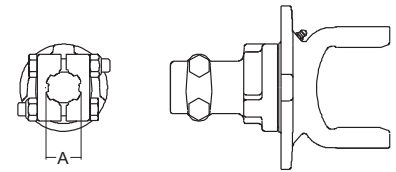
Overrunning Clutch

(Free-Wheel Clockwise)

Stock Number	Type	Clutch Setting	Dim. "A" Bore
580-8606	Spring Lock	N/A	1 3/8" x 6 Spl.

Interchanges with:

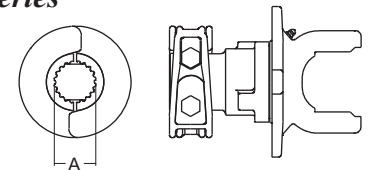
Bondioli & Pavesi 8 Series



Clamp Yoke Stock Number	Overrunning Clamp Yoke Stock Number	Dim. "A" Bore
817-6806	818-6806	1 3/8" x 6 Spl.
817-6821	818-6821	1 3/8" x 21 Spl.

Interchanges with:

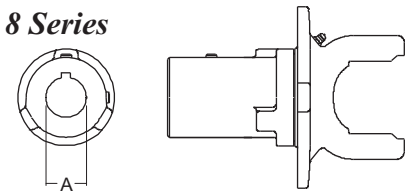
Bondioli & Pavesi 8 Series



Clamp Yoke Stock Number	Overrunning Clamp Yoke Stock Number	Dim. "A" Bore
817-6820	818-6820	1 3/4" x 20 Spl.
817-6828	818-6828	1 3/4" x 6 Spl.

Interchanges with:

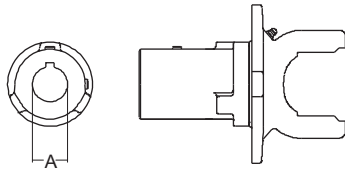
Bondioli & Pavesi 8 Series



Round Bore Yoke Stock Number	Overrunning Round Bore Yoke Stock Number	Dim. "A" Bore w / Keyway & Set-screw
825-6822	826-6822	1 3/8" Rd.

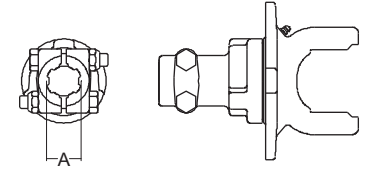
Clutch Components

Interchanges with:
Walterscheid 2400 Series



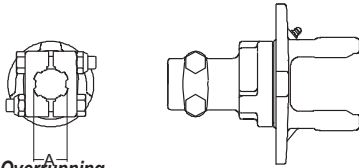
Round Bore Yoke Stock Number	Overrunning Round Bore Yoke Stock Number	Dim. "A" Bore w / Keyway & Set-screw
825-7622	826-7622	1 3/8" Rd.
825-7628	826-7628	1 3/4" Rd.

Interchanges with:
Walterscheid 2500 Series



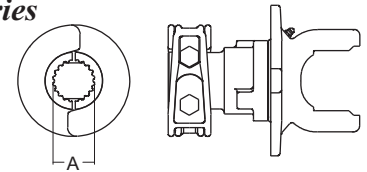
Clamp Yoke Stock Number	Overrunning Clamp Yoke Stock Number	Dim. "A" Bore
817-7906	818-7906	1 3/8" x 6 Spl.
817-7921	818-7921	1 3/8" x 21 Spl.

Interchanges with:
Walterscheid 2400 Series



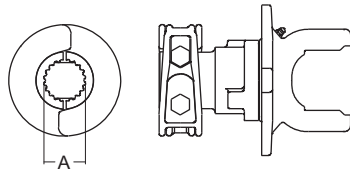
Clamp Yoke Stock Number	Overrunning Clamp Yoke Stock Number	Dim. "A" Bore
817-7606	818-7606	1 3/8" x 6 Spl.
817-7621	818-7621	1 3/8" x 21 Spl.

Interchanges with:
Walterscheid 2500 Series



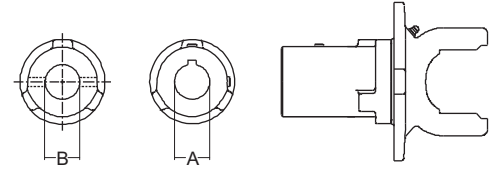
Clamp Yoke Stock Number	Overrunning Clamp Yoke Stock Number	Dim. "A" Bore
817-7920	818-7920	1 3/4" x 20 Spl.

Interchanges with:
Walterscheid 2400 Series



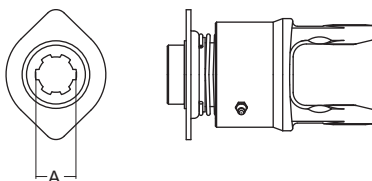
Clamp Yoke Stock Number	Overrunning Clamp Yoke Stock Number	Dim. "A" Bore
817-7620	818-7620	1 3/4" x 20 Spl.

Interchanges with:
Walterscheid 2500 Series



Round Bore Yoke Stock Number	Overrunning Round Bore Yoke Stock Number	Dim. "A" Bore w / Keyway & Set-screw	Dim. "B" Bore with 3/8" Pinhole
825-7922	826-7922	1 3/8" Rd.	
825-7928	826-7928	1 3/4" Rd.	
827-7932	Not Available		2" Rd.

Interchanges with:
Walterscheid 2400 Series

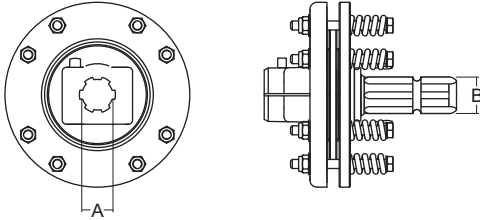


Overrunning Clutch
(Free-Wheel Clockwise)

Stock Number	Type	Clutch Setting	Dim. "A" Bore
580-7606	Spring Lock	N/A	1 3/8" x 6 Spl.

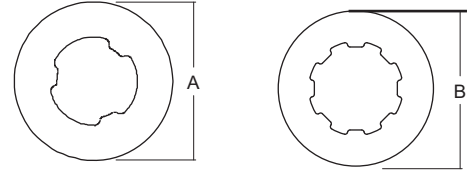
Clutch Components

Universal Friction Clutch



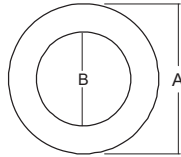
Stock Number	Dim. "A"	Clutch Setting	Dim. "B" Bore
560-6006	1 3/8" x 6 Spl.	8000 in-lbs	1 3/8" x 6 Spl.
560-6020	1 1/4" Rd.	8000 in-lbs	1 3/8" x 6 Spl.
560-6022	1 3/8" Rd.	8000 in-lbs	1 3/8" Rd.
560-6606	1 3/8" x 6 Spl.	6675 in-lbs	1 3/8" x 6 Spl.
560-0622	1 3/8" Rd.	8000 in-lbs	1 3/8" x 6 Spl.

Separator Plate 7" and 9"



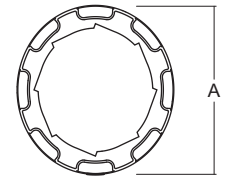
Separator Plate Stock Number	Overrunning Separator Plate Stock Number	Dim. "A" O.D.	Dim. "B" O.D.
990-7000		6.20"	
	991-7000		6.20"
990-9000		8.07"	
	991-9000		8.07"

Friction Disc



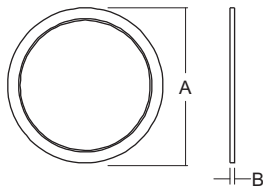
Stock Number	Dim. "A" O.D.	Dim. "B" I.D.
970-7000	6.20"	3.89"
970-9000	7.95"	5.5"
970-0153	6.02"	3.58"
970-4140	5.12"	3.38"
970-4160	6.4"	3.82"
970-6000	5.25"	3.5"

Overrunning Clutch Repair Kit 7" and 9"



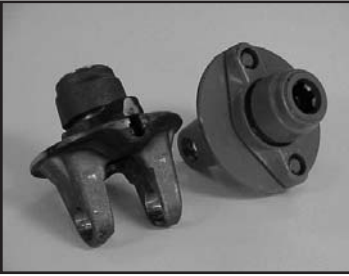
Stock Number	Contents
980-7000	(1) Overrunning Collar (2) Dogs (2) Leaf Springs (1) Wave Spring (1) Washer (1) Retaining Ring (1) Assembly / Disassembly Instructions

Spring 7" and 9"



Stock Number	Dim. "A" O.D.	Dim. "B" Thickness
987-9000	6.188"	.138"
98712000	6.188"	.158"
98715000	6.188"	.169"
98718000	6.188"	.189"
98910000	8.00"	.158"
98915000	7.81"	.169"
98918000	7.87"	.189"
98921000	7.75"	.89"

BALL SHEAR



APPLICATIONS: SPREADERS, ROTARY CUTTERS, BALERS, GRAIN CARTS, GRAIN AUGERS, SNOWBLOWERS, FORAGE BLOWERS

BENEFITS: MINIMAL MAINTENANCE; NO DAMAGING HEAT GENERATION FOR HIGHER PRODUCTIVITY; REPEATABLE OVERLOAD SETTING; SMOOTH DISENGAGED OPERATION - NO DAMAGING TORQUE SPIKES; CAN BE APPLIED ON IMPLEMENT OR TRACTOR SHAFT IN NORTH AMERICA

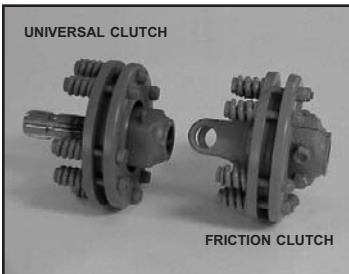
RATCHET



APPLICATIONS: HAY TEDDERS, ROUND BALERS

BENEFITS: REPEATABLE OVERLOAD SETTING; TORQUE PULSES WHILE SLIPPING AIDS IN DISLODGING PLUGS FOR INCREASED PRODUCTIVITY; MINIMAL MAINTENANCE; AUDIBLE OPERATOR NOTIFICATION; COMPACT 4" (102 mm) DESIGN

UNIVERSAL/FRICTION



APPLICATIONS: MOWER CONDITIONERS, ROTARY CUTTERS, BALERS, SHREDDERS, SNOWBLOWERS, SPREADERS, GRAIN CARTS, MIXERS

BENEFITS: CORROSION RESISTANT FRICTION DISCS; MINIMAL MAINTENANCE; SMOOTH OPERATION - NO DAMAGING TORQUE SPIKES; TORQUE CARRYING CAPABILITY WHILE SLIPPING AIDS IN DISLODGING PLUGS FOR INCREASED PRODUCTIVITY

OVERRUNNING



APPLICATIONS: GRAIN CARTS, SPREADERS, MIXERS, SHREDDERS, MOWER CONDITIONERS, ROTARY CUTTERS

BENEFITS: LOW-MAINTENANCE; ALLOWS INERTIA FROM IMPLEMENT TO DISSIPATE WITHOUT PUTTING LOAD BACK THROUGH THE TRACTOR OR SYSTEM

TORQMASTER



APPLICATIONS: SPREADERS, ROTARY CUTTERS, SHREDDERS, BALERS, GRAIN CARTS, SNOWBLOWERS, MOWER CONDITIONERS, MIXERS

BENEFITS: IMPLEMENT OVERLOAD PROTECTION; MINIMAL MAINTENANCE; ISOLATES AND DISSIPATES HEAT - MINIMIZING DOWNTIME FOR HIGHER PRODUCTIVITY; REPEATABLE OVERLOAD SETTING; CORROSION RESISTANT FRICTION DISCS; TORQUE CARRYING CAPABILITY WHILE SLIPPING AIDS IN DISLODGING PLUGS FOR INCREASED PRODUCTIVITY

