



Weasler®

***AFTERMARKET
PRODUCT GUIDE***

CONSTANT VELOCITY DRIVELINES & COMPONENTS

**CONSTANT
VELOCITY**

• NORTH AMERICAN •

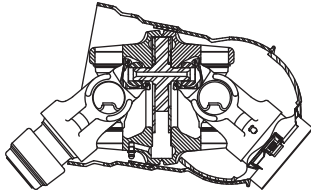
• METRIC •

• APPLICATIONS •

80° Constant Velocity Driveline

With innovative and patented features exclusive to Weasler for North American-style Drivelines.

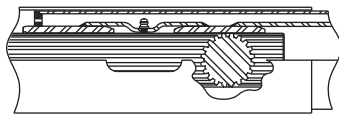
Features



Articulated Guard System

CV center housing accommodates a bell that fits within minimum ASAE tractor master shield. Bell is articulated to allow a full 80°. The plastic guard over the CV joint

is supported by a bearing that rides on the center housing.



Telescoping Driveline

The Weasler CV driveline utilizes shafts that telescope into a hardened sleeve with a large grease reservoir. Reduced friction means low thrust,

for minimal wear throughout CV life. Tested in contaminated environments.

Long Life

Compact, heavy duty center housing has a large capacity grease cavity and unique lubrication system. Patented grease system insures positive one shot lubrication of hardened and ground centering balls and sockets.

Unique center slider support plates greatly increase life by retaining lubrication and sealing out contaminants. Full surface contact means reduced wear on all components, minimizing vibration.

High Torsional Strength

The exclusive ball and socket of the Weasler CV is integral with the yoke. Trunnions on the center plate are supported directly in the yoke by the ball and socket, providing

strength for heavy-duty applications. Forged yokes and center housing are engineered for high torque.

Benefits

Constant Velocity Drivelines allow turns at high angles under full power without damaging the driveline or other components. When using conventional drivelines, the vibrations increase as the angle increases.

A CV driveline will substantially reduce vibrations due to its operating at a constant speed. The reduction in vibration will result in fewer breakdowns and lower cost of implement maintenance.

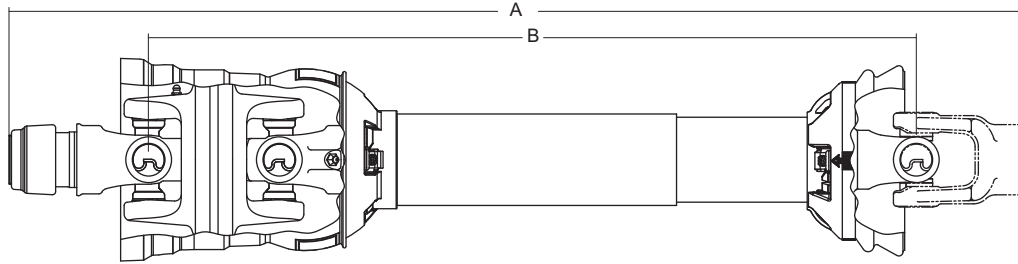
Applications

Listed are some applications of 80° CV drivelines that Weasler currently produces for Original Equipment Manufacturers.

Round Balers
Square Balers
Orchard Sprayers
Flexwing Mowers
Manure Pumps
Beet Toppers

Rock Pickers
Stalk Choppers
Box-type Manure Spreaders
Tank-type Manure Spreaders
Mower Conditioners
Peanut Harvesters

80° Constant Velocity Driveline



A = Overall Length

B = Centerline Length

Constant Velocity Driveline Replacement Chart

ASAE Category	Weasler Series	Replacement For
3	14	Bondioli & Pavesi 4 Series Walterscheid 2380 Series
4	35	Bondioli & Pavesi 5 Series
5	35/44	Bondioli & Pavesi 6 Series Walterscheid 2480 Series
6	55	Bondioli & Pavesi 8 Series Walterscheid 2580 Series & 2680 Series

**CONSTANT
VELOCITY**

The above chart lists the approximate size replacement for Constant Velocity Drivelines. These are not an exact interchange, and should be used as a general replacement guide only. NOTE: 35/44 refers to CV Series. When CV is assembled with 44 Series tube end driveline becomes a 44 Series. When CV is assembled with a 35 Series tube end driveline is a 35 Series.

INSTRUCTIONS FOR ORDERING A CV DRIVELINE

To determine the series of a Weasler driveline, reference the dimension of the Cross & Bearing as illustrated on page 9. To determine the series as a replacement for a competitive driveline, reference the above chart.

Determine the overall length of the driveline in a closed position (Dim. "A") in the illustration. Next select the stock number which closely corresponds with the appropriate series and length.

- Some drivelines are furnished without Cross & Bearing Kit and Implement Yoke. For implement yoke selection refer to the appropriate Weasler Aftermarket Driveline Component section.
- **GUARDS MUST ROTATE FREELY ON YOKES.**

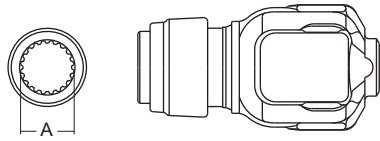
N O T E S

**CONSTANT
VELOCITY**

NORTH AMERICAN SECTION

80° CV Category 3 / 14 Series

Tractor Yoke

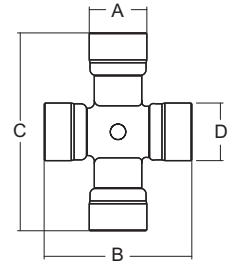


Safety Slide Lock

Repair Kit - Page 81

Stock Number	Dim. "A" Bore
107-1406	1 3/8" × 6 Spl.
107-1420	1 3/4" × 20 Spl.
107-1421	1 3/8" × 21 Spl.

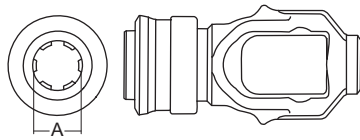
Extended Lubrication Cross & Bearing Kit (E-Kit)



Stock Number	Dim. "A"	Dim. "B"	Dim. "C"	Dim. "D"
201-1430	1 1/8"	2 5/8"	4 1/4"	1 1/8"

Spring-Lok

Repair Kit - Page 81



Stock Number	Dim. "A" Bore
108-1406	1 3/8" × 6 Spl.
108-1421	1 3/8" × 21 Spl.

Shaft

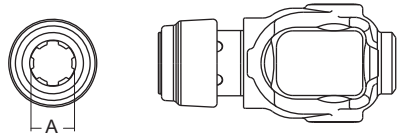


1" × 1 1/8" Rectangular

Stock Number	Length
400-1618	6'
401-1618	10'
404-1618	3'

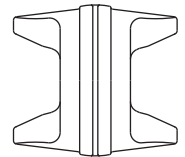
Auto-Lok

Repair Kit - Page 81



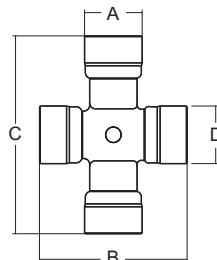
Stock Number	Dim. "A" Bore
111-1406	1 3/8" × 6 Spl.
111-1420	1 3/4" × 20 Spl.
111-1421	1 3/8" × 21 Spl.

Center Housing



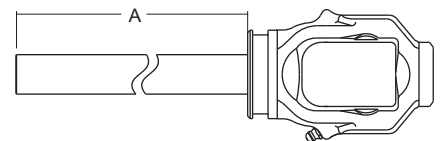
Stock Number
550-1430

Cross & Bearing Kit (R-Kit)



Stock Number	Dim. "A"	Dim. "B"	Dim. "C"	Dim. "D"
200-1430	1 1/8"	2 5/8"	4 1/4"	1 1/8"

Yoke & Shaft

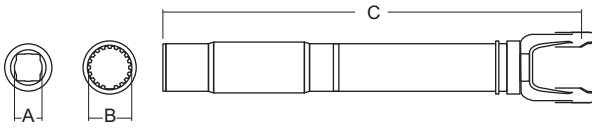


Stock Number	Shaft Size	Dim. "A" Shaft Length
10101400	1" x 1 1/8" Rect.	27 1/4"

CONSTANT VELOCITY

80° CV Category 3 / 14 Series...continued

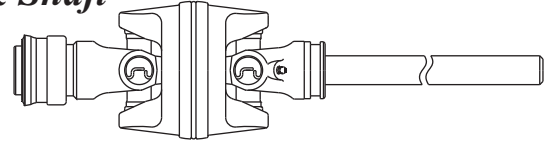
Yoke, Tube & Sleeve Assembly



Stock Number	Dim. "A" Bore	Dim. "B" Bore	Overall Driveline Length	Dim. "C" *CL to end of Sleeve
11101448	1" x 1 1/8" Rect.	N/A	48"	31.62"
11101458	1" x 1 1/8" Rect.	N/A	58"	41.62"
11101467	1" x 1 1/8" Rect.	N/A	67"	50.62"

*CL = Centerline

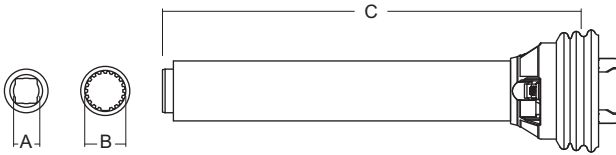
Joint & Shaft



Stock Number	Shaft Size	Shaft Length	Tractor Yoke
15501406	1" x 1 1/8" Rect.	27 1/4"	1 3/8" x 6 Spl.
15601421	1" x 1 1/8" Rect.	27 1/4"	1 3/8" x 21 Spl.

**CONSTANT
VELOCITY**

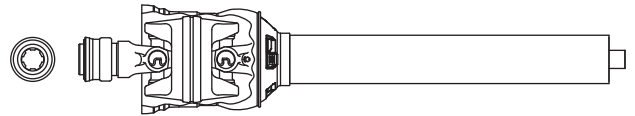
Yoke, Tube & Sleeve Assembly w/Guard



Stock Number	Dim. "A" Bore	Dim. "B" Bore	Overall Driveline Length	Dim. "C" *CL to end of Sleeve
17501448	1" x 1 1/8" Rect.	N/A	48"	31.62"
17501458	1" x 1 1/8" Rect.	N/A	58"	41.62"
17501467	1" x 1 1/8" Rect.	N/A	67"	50.62"

*CL = Centerline

Joint & Shaft w/Guard

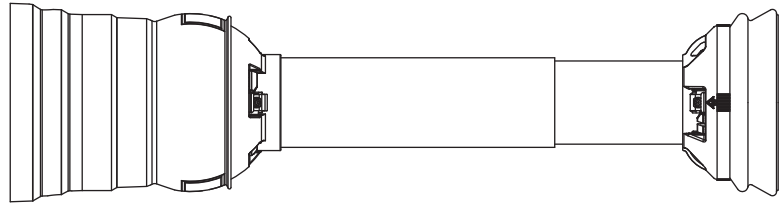


Stock Number	Shaft Size	Shaft Length	Tractor Yoke
19501406	1" x 1 1/8" Rect.	27 1/4"	1 3/8" x 6 Spl.
19601421	1" x 1 1/8" Rect.	27 1/4"	1 3/8" x 21 Spl.

80° CV Category 3 / 14 Series...continued

Guard

Bearings supplied with Guard

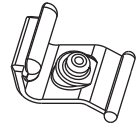


Stock Number	Overall Driveline Length	Bearing Kit (2-per kit)
912-1448	48"	921-1400
912-1458	58"	921-1400
912-1467	67"	921-1400

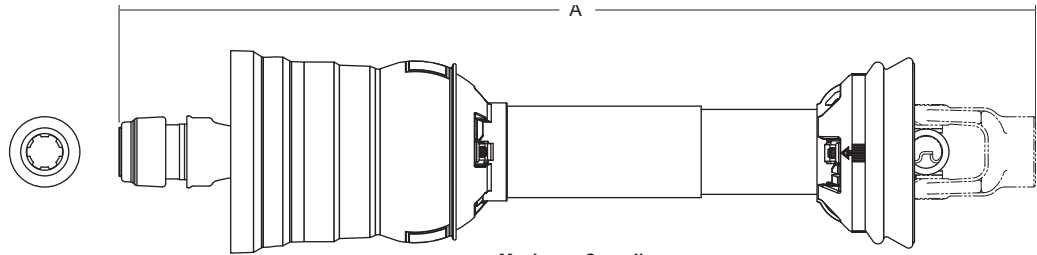
Assembly instructions included with guard
Note: When installing Guards observe the following:
 1) Install proper nylon bearing (See Page 13)
 2) Guards must rotate freely on yokes

Easy Lock™ Replacement Kit

Part Number: 13005000 (4-per Kit)



Drivelines



Stock Number	Shaft Size	Dim. "A" Overall Compressed Length	Maximum Overall Extended Operating Length	Tractor Yoke
14501448*	1" x 1 1/8"	48"	67"	1 3/8" x 6 Spl.
14501458*	1" x 1 1/8"	58"	77"	1 3/8" x 6 Spl.
14501467*	1" x 1 1/8"	67"	86"	1 3/8" x 6 Spl.
14601448*	1" x 1 1/8"	48"	67"	1 3/8" x 21 Spl.
14601458*	1" x 1 1/8"	58"	77"	1 3/8" x 21 Spl.
14601467*	1" x 1 1/8"	67"	86"	1 3/8" x 21 Spl.

*(Order implement yoke and cross & bearing kit separately as required)

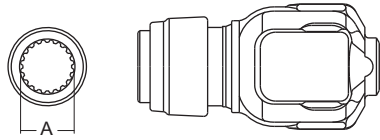
CONSTANT VELOCITY

80° CV Category 4 / 35 Series

Tractor Yoke

Safety Slide Lock

Repair Kit - Page 81



Stock Number	Dim. "A" Bore
112-3506	1 3/8" × 6 Spl.
112-3520	1 3/4" × 20 Spl.
112-3521	1 3/8" × 21 Spl.

Shaft



1 5/16" × 20 Spline

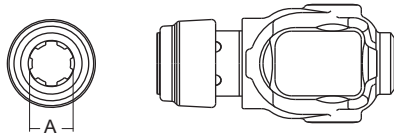
Induction Hardened

Stock Number	Length	Major Dim.
404-2120	3'	1.380/1.375

CONSTANT VELOCITY

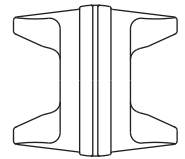
Auto-Lok

Repair Kit - Page 81



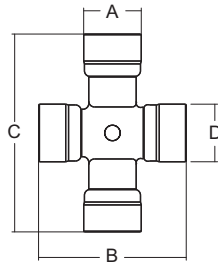
Stock Number	Dim. "A" Bore
113-3506	1 3/8" × 6 Spl.
113-3520	1 3/4" × 20 Spl.
113-3521	1 3/8" × 21 Spl.

Center Housing



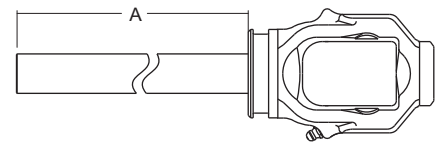
Stock Number
550-3540

Cross & Bearing Kit (R-Kit)



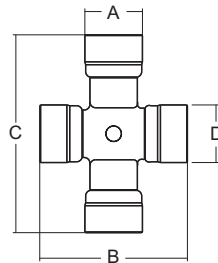
Stock Number	Dim. "A"	Dim. "B"	Dim. "C"	Dim. "D"
200-3540	1 1/8"	3 7/32"	4 1/4"	1 1/4"

Yoke & Shaft



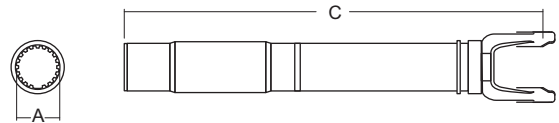
Stock Number	Shaft Size	Dim. "A" Shaft Length
10103501	1 5/16" × 20 Spl.	27"

Extended Lubrication Cross & Bearing Kit (E-Kit)



Stock Number	Dim. "A"	Dim. "B"	Dim. "C"	Dim. "D"
201-3540	1 1/8"	3 7/32"	4 1/4"	1 1/4"

Yoke, Tube & Sleeve Assembly

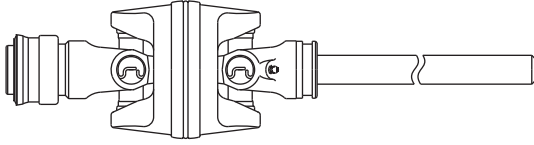


Stock Number	Dim. "A" Bore	Overall Driveline Length	Dim. "C" *CL to end of Sleeve
11113548	1 5/16" × 20 Spl.	48"	29.25"
11113558	1 5/16" × 20 Spl.	58"	39.38"
11113567	1 5/16" × 20 Spl.	67"	48.25"

*CL = Centerline

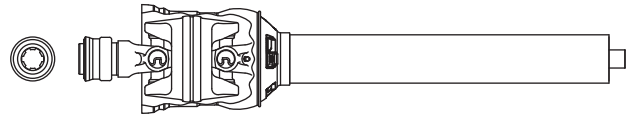
80° CV Category 4 / 35 Series...continued

Joint & Shaft



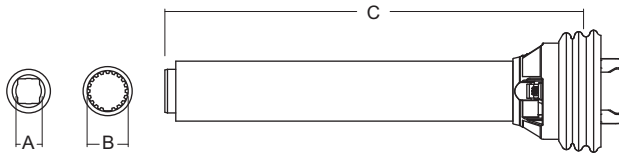
Stock Number	Shaft Size	Shaft Length	Tractor Yoke
15503540	1 5/16" × 20 Spl.	27"	1 3/8" × 6 Spl.
15603540	1 5/16" × 20 Spl.	27"	1 3/8" × 21 Spl.
15703540	1 5/16" × 20 Spl.	27"	1 3/4" × 20 Spl.

Joint & Shaft w/Guard



Stock Number	Shaft Size	Shaft Length	Tractor Yoke
19503540	1 5/16" × 20 Spl.	27"	1 3/8" × 6 Spl.
19603540	1 5/16" × 20 Spl.	27"	1 3/8" × 21 Spl.
19703540	1 5/16" × 20 Spl.	27"	1 3/4" × 20 Spl.

Yoke, Tube & Sleeve Assembly w/Guard



Stock Number	Dim. "A" Bore	Dim. "B" Bore	Overall Driveline Length	Dim. "C" *CL to end of Sleeve
17513548	N/A	1 5/16" × 20 Spl.	48"	29.25"
17513558	N/A	1 5/16" × 20 Spl.	58"	39.37"
17513567	N/A	1 5/16" × 20 Spl.	67"	48.25"

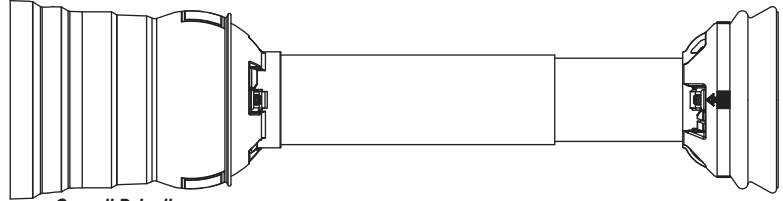
CL = Centerline

**CONSTANT
VELOCITY**

80° CV Category 4 / 35 Series...continued

Guard

Bearings supplied with Guard



Stock Number	Overall Driveline Length	Bearing Kit (2 per kit)
912-1448	48"	921-1400
912-1458	58"	921-1400
912-1467	67"	921-1400

Assembly instructions included with guard
Note: When installing Guards observe the following:
 1) Install proper nylon bearing (See Page 13)
 2) Guards must rotate freely on yokes.

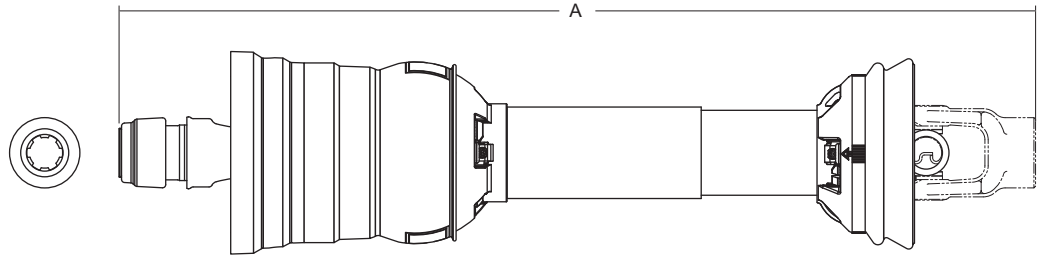
Easy Lock™ Replacement Kit

Part Number: 13005000 (4-per Kit)



CONSTANT VELOCITY

Drivelines



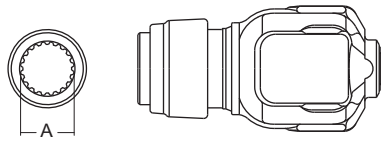
Stock Number	Shaft Size	Dim. "A" Overall Compressed Length	Maximum Overall Extended Operating Length	Tractor Yoke
14513548*	1 5/16" x 20 Spl.	48"	67"	1 3/8" x 6 Spl.
14513558*	1 5/16" x 20 Spl.	58"	77"	1 3/8" x 6 Spl.
14513567*	1 5/16" x 20 Spl.	67"	84"	1 3/8" x 6 Spl.
14513573*	1 5/16" x 20 Spl.	73"	92"	1 3/8" x 6 Spl.
14613548*	1 5/16" x 20 Spl.	48"	67"	1 3/8" x 21 Spl.
14613558*	1 5/16" x 20 Spl.	58"	77"	1 3/8" x 21 Spl.
14613567*	1 5/16" x 20 Spl.	67"	84"	1 3/8" x 21 Spl.
14613573*	1 5/16" x 20 Spl.	73"	92"	1 3/8" x 21 Spl.
14713548*	1 5/16" x 20 Spl.	48"	67"	1 3/4" x 20 Spl.
14713558*	1 5/16" x 20 Spl.	58"	77"	1 3/4" x 20 Spl.
14713567*	1 5/16" x 20 Spl.	67"	84"	1 3/4" x 20 Spl.
14713573*	1 5/16" x 20 Spl.	73"	92"	1 3/4" x 20 Spl.

*(Order implement yoke and cross & bearing kit separately as required)

80° CV Category 5 / 35/44 Series

Tractor Yoke

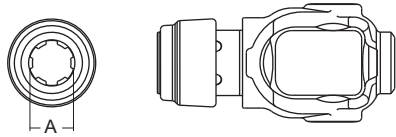
Safety Slide Lock
Repair Kit - Page 81



Stock Number	Dim. "A" Bore
107-3506	1 3/8" × 6 Spl.
107-3520	1 3/4" × 20 Spl.
107-3521	1 3/8" × 21 Spl.

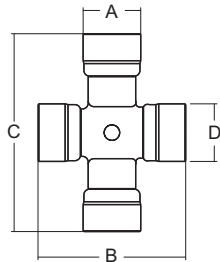
Auto-Lok

Repair Kit - Page 81



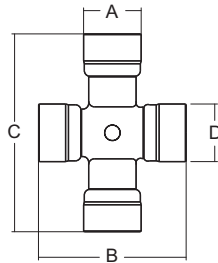
Stock Number	Dim. "A" Bore
111-3506	1 3/8" × 6 Spl.
111-3520	1 3/4" × 20 Spl.
111-3521	1 3/8" × 21 Spl.

Cross & Bearing Kit (R-Kit)



Stock Number	Dim. "A"	Dim. "B"	Dim. "C"	Dim. "D"
200-3545	1 1/4"	3 7/32"	4 5/16"	1 1/4"

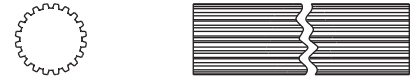
Extended Lubrication Cross & Bearing Kit (E-Kit)



Stock Number	Dim. "A"	Dim. "B"	Dim. "C"	Dim. "D"
201-3545	1 1/4"	3 7/32"	4 5/16"	1 1/4"

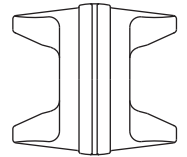
Shaft

1 11/16" × 20 Spline
Induction Hardened



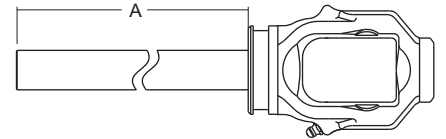
Stock Number	Length	Major Dim.
404-2720	3'	1.790/1.785

Center Housing



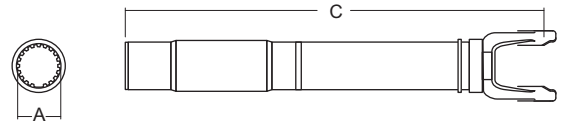
Stock Number
550-3545

Yoke & Shaft



Stock Number	Shaft Size	Dim. "A" Shaft Length
10103500	1 11/16" × 20 Spl.	27"

Yoke, Tube & Sleeve Assembly



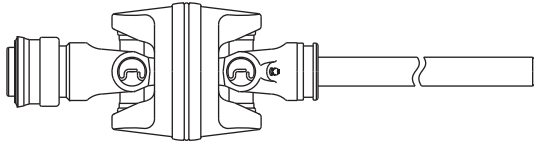
Stock Number	Dim. "A" Bore	Overall Driveline Length	Dim. "B" *CL to end of Sleeve
11103548	1 11/16" × 20 Spl.	48"	29.25"
11103558	1 11/16" × 20 Spl.	58"	39.38"
11103567	1 11/16" × 20 Spl.	67"	48.25"
11103573	1 11/16" × 20 Spl.	73"	54.38"
11103579	1 11/16" × 20 Spl.	79"	58.25"
11104448	1 11/16" × 20 Spl.	48"	29.88"
11104458	1 11/16" × 20 Spl.	58"	38.88"
11104467	1 11/16" × 20 Spl.	67"	47.88"
11104473	1 11/16" × 20 Spl.	73"	53.88"
11104479	1 11/16" × 20 Spl.	79"	59.88"

*CL = Centerline

**CONSTANT
VELOCITY**

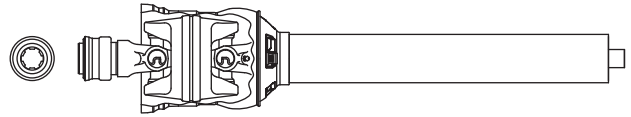
80° CV Category 5 / 35/44 Series...continued

Joint & Shaft



Stock Number	Shaft Size	Shaft Length	Tractor Yoke
15503506	1 11/16" × 20 Spl.	27"	1 3/8" × 6 Spl.
15603521	1 11/16" × 20 Spl.	27"	1 3/8" × 21 Spl.
15703520	1 11/16" × 20 Spl.	27"	1 3/4" 20 Spl.

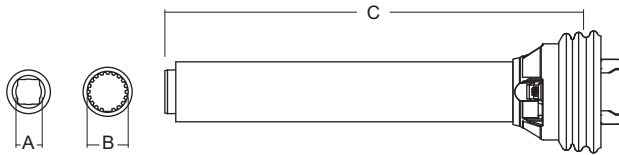
Joint & Shaft w/Guard



Stock Number	Shaft Size	Shaft Length	Tractor Yoke
19503506	1 11/16" × 20 Spl.	27 1/4"	1 3/8" × 6 Spl.
19603521	1 11/16" × 20 Spl.	27 1/4"	1 3/8" × 21 Spl.
19703520	1 11/16" × 20 Spl.	27 1/4"	1 3/4" × 20 Spl.

CONSTANT VELOCITY

Yoke, Tube & Sleeve Assembly w/Guard



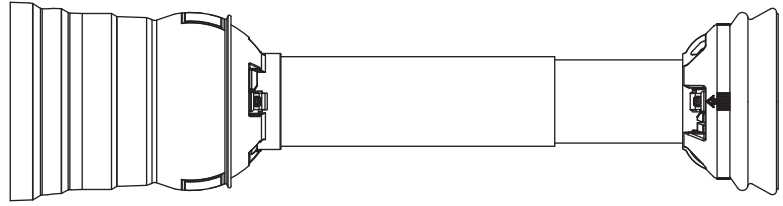
Stock Number	Dim. "A" Bore	Dim. "B" Bore	Overall Driveline Length	Dim. "C" *CL to end of Sleeve
17503548	N/A	1 11/16" × 20 Spl.	48"	29.25"
17503558	N/A	1 11/16" × 20 Spl.	58"	39.37"
17503567	N/A	1 11/16" × 20 Spl.	67"	48.25"
17503573	N/A	1 11/16" × 20 Spl.	73"	54.37"
17503579	N/A	1 11/16" × 20 Spl.	79"	58.25"
17504448	N/A	1 11/16" × 20 Spl.	48"	28.87"
17504458	N/A	1 11/16" × 20 Spl.	58"	38.87"
17504467	N/A	1 11/16" × 20 Spl.	67"	47.87"
17504473	N/A	1 11/16" × 20 Spl.	73"	53.87"
17504479	N/A	1 11/16" × 20 Spl.	79"	59.87"

*CL = Centerline

80° CV Category 5 / 35/44 Series...continued

Guard

Bearings supplied with Guard



Stock Number	Overall Driveline Length	Bearing Kit (2 per kit)
912-3548	48"	921-3500
912-3558	58"	921-3500
912-3567	67"	921-3500
912-3573	73"	921-3500
912-3579	79"	921-3500

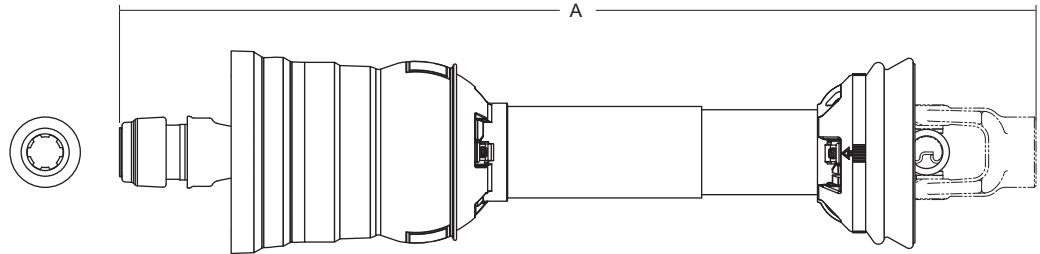
Assembly instructions included with guard
Note: When installing Guards observe the following:
 1) Install proper nylon bearing (See Page 13)
 2) Guards must rotate freely on yokes

Easy Lock™ Replacement Kit

Part Number: 13005000 (4-per Kit)



Drivelines



Stock Number	Shaft Size	Dim. "A" Overall Compressed Length	Maximum Overall		Tractor Yoke	Implement Yoke
			Length	Extended Operating Length		
14503500	1 11/16" x 20 Spl.	58"	79"		1 3/8" x 6 Spl.	1 3/8" x 6 Spl. w/Friction Cl.
14503501	1 11/16" x 20 Spl.	67"	88"		1 3/8" x 6 Spl.	1 3/8" x 21 Spl. w/Friction Cl.
14503502	1 11/16" x 20 Spl.	58"	79"		1 3/8" x 6 Spl.	1 3/8" x 6 Spl w/Friction Cl.
14503548	1 11/16" x 20 Spl.	48"	67"		1 3/8" x 6 Spl.	N/A*
14503558	1 11/16" x 20 Spl.	58"	77"		1 3/8" x 6 Spl.	N/A*
14503567	1 11/16" x 20 Spl.	67"	84"		1 3/8" x 6 Spl.	N/A*
14503573	1 11/16" x 20 Spl.	73"	92"		1 3/8" x 6 Spl.	N/A*
14503579	1 11/16" x 20 Spl.	79"	96"		1 3/8" x 6 Spl.	N/A*
14504448	1 11/16" x 20 Spl.	48"	67"		1 3/8" x 6 Spl.	N/A*
14504458	1 11/16" x 20 Spl.	58"	77"		1 3/8" x 6 Spl.	N/A*
14504467	1 11/16" x 20 Spl.	67"	84"		1 3/8" x 6 Spl.	N/A*
14504473	1 11/16" x 20 Spl.	73"	92"		1 3/8" x 6 Spl.	N/A*
14504479	1 11/16" x 20 Spl.	79"	96"		1 3/8" x 6 Spl.	N/A*
14603500	1 11/16" x 20 Spl.	58"	79"		1 3/8" x 21 Spl	1 3/8" x 6 Spl. w/Friction Cl.
14603548	1 11/16" x 20 Spl.	48"	67"		1 3/8" x 21 Spl.	N/A*
14603558	1 11/16" x 20 Spl.	58"	77"		1 3/8" x 21 Spl.	N/A*
14603567	1 11/16" x 20 Spl.	67"	84"		1 3/8" x 21 Spl.	N/A*
14603573	1 11/16" x 20 Spl.	73"	92"		1 3/8" x 21 Spl.	N/A*
14603579	1 11/16" x 20 Spl.	79"	96"		1 3/8" x 21 Spl.	N/A*
14604448	1 11/16" x 20 Spl.	48"	67"		1 3/8" x 21 Spl.	N/A*
14604458	1 11/16" x 20 Spl.	58"	77"		1 3/8" x 21 Spl.	N/A*
14604467	1 11/16" x 20 Spl.	67"	84"		1 3/8" x 21 Spl.	N/A*
14604473	1 11/16" x 20 Spl.	73"	92"		1 3/8" x 21 Spl.	N/A*
14604479	1 11/16" x 20 Spl.	79"	96"		1 3/8" x 21 Spl.	N/A*
14703558	1 11/16" x 20 Spl.	58"	77"		1 3/4" x 20 Spl.	N/A*
14703567	1 11/16" x 20 Spl.	67"	84"		1 3/4" x 20 Spl.	N/A*
14703573	1 11/16" x 20 Spl.	73"	92"		1 3/4" x 20 Spl.	N/A*
14703579	1 11/16" x 20 Spl.	79"	96"		1 3/4" x 20 Spl.	N/A*
14704448	1 11/16" x 20 Spl.	48"	67"		1 3/4" x 20 Spl.	N/A*
14704458	1 11/16" x 20 Spl.	58"	77"		1 3/4" x 20 Spl.	N/A*
14704467	1 11/16" x 20 Spl.	67"	84"		1 3/4" x 20 Spl.	N/A*
14704473	1 11/16" x 20 Spl.	73"	92"		1 3/4" x 20 Spl.	N/A*
14704479	1 11/16" x 20 Spl.	79"	96"		1 3/4" x 20 Spl.	N/A*

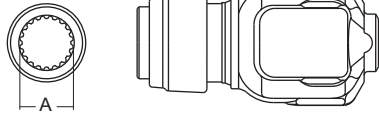
*(Order implement yoke and cross & bearing kit separately as required)

CONSTANT VELOCITY

80° CV Category 6 / 55 Series

Tractor Yoke

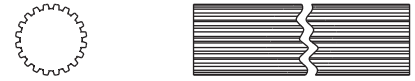
Safety Slide Lock
Repair Kit - Page 81



Stock Number	Dim. "A" Bore
107-5506	1 3/8" × 6 Spl.
107-5520	1 3/4" × 20 Spl.
107-5521	1 3/8" × 21 Spl.

Shaft

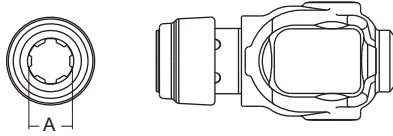
1 11/16" × 20 Spline
Induction Hardened



Stock Number	Length	Major Dim.
404-2720	3'	1.790/1.785

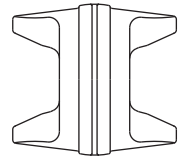
CONSTANT VELOCITY

Auto-Lok
Repair Kit - Page 81



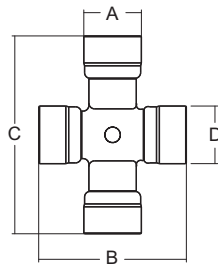
Stock Number	Dim. "A" Bore
111-5506	1 3/8" × 6 Spl.
111-5520	1 3/4" × 20 Spl.
111-5521	1 3/8" × 21 Spl.

Center Housing



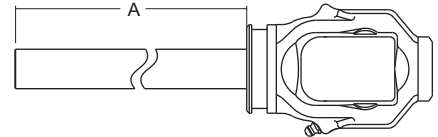
Stock Number
550-5556

Cross & Bearing Kit (R-Kit)



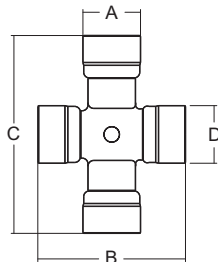
Stock Number	Dim. "A"	Dim. "B"	Dim. "C"	Dim. "D"
200-5556	1 5/16"	3 23/32"	4 5/16"	1 17/32"

Yoke & Shaft



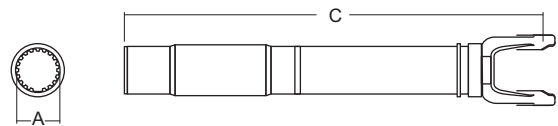
Stock Number	Shaft Size	Dim. "A" Shaft Length
10105500	1 11/16" × 20 Spl.	27"

Extended Lubrication Cross & Bearing Kit (E-Kit)



Stock Number	Dim. "A"	Dim. "B"	Dim. "C"	Dim. "D"
201-5556	1 5/16"	3 23/32"	4 5/16"	1 17/32"

Yoke, Tube & Sleeve Assembly

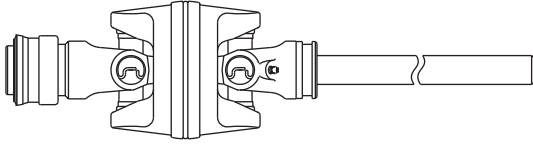


Stock Number	Dim. "A" Bore	Overall Driveline Length	Dim. "C" *CL to end of Sleeve
11105548	1 11/16" × 20 Spl.	48"	28.88"
11105558	1 11/16" × 20 Spl.	58"	38.88"
11105567	1 11/16" × 20 Spl.	67"	47.88"
11105573	1 11/16" × 20 Spl.	73"	53.88"
11105579	1 11/16" × 20 Spl.	79"	59.88"

*CL = Centerline

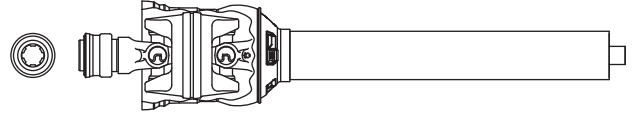
80° CV Category 6 / 55 Series...continued

Joint & Shaft



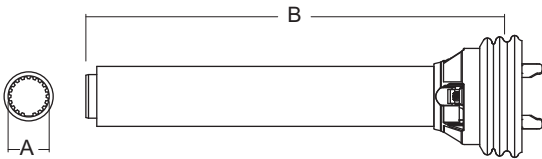
Stock Number	Shaft Size	Shaft Length	Tractor Yoke
15505506	1 11/16" x 20 Spl.	27"	1 3/8" x 6 Spl.
15605521	1 11/16" x 20 Spl.	27"	1 3/8" x 21 Spl.
15705520	1 11/16" x 20 Spl.	27"	1 3/4" x 20 Spl.

Joint & Shaft w/Guard



Stock Number	Shaft Size	Shaft Length	Tractor Yoke
19505506	1 11/16" x 20 Spl.	27.5"	1 3/8" x 6 Spl.
19605521	1 11/16" x 20 Spl.	27.5"	1 3/8" x 21 Spl.
19705520	1 11/16" x 20 Spl.	27.5"	1 3/4" x 20 Spl.
93-14505555	1 11/16" x 20 Spl.	30.63"	1 3/8" x 6 Spl.
93-14605555	1 11/16" x 20 Spl.	30.63"	1 3/8" x 21 Spl.
93-14705555	1 11/16" x 20 Spl.	30.63"	1 3/4" x 20 Spl.

Yoke, Tube & Sleeve Assembly w/Guard



Stock Number	Dim. "A" Bore	Overall Driveline Length	Dim. "B" *CL to end of Sleeve	Implement Yoke
17505548	1 11/16" x 20 Spl.	48"	29.25"	**
17505558	1 11/16" x 20 Spl.	58"	39.37"	**
17505567	1 11/16" x 20 Spl.	67"	48.25"	**
17505573	1 11/16" x 20 Spl.	73"	54.37"	**
17505579	1 11/16" x 20 Spl.	79"	58.25"	**
92-14505551	1 11/16" x 20 Spl.	51"	30.75"	1 3/4" x 20 Spl.
92-14505555	1 11/16" x 20 Spl.	55"	34.75"	1 3/8" x 6 Spl.
92-14515555	1 11/16" x 20 Spl.	55"	34.75"	1 3/4" x 20 Spl.

*CL = Centerline

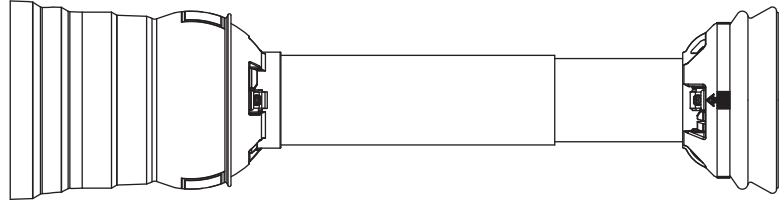
** (Order implement yoke and cross & bearing kit separately as required)

CONSTANT VELOCITY

80° CV Category 6 / 55 Series...continued

Guard

Bearings supplied with Guard



Stock Number	Overall Driveline Length	Bearing Kit (2 per kit)
912-5548	48"	921-5500
912-5558	58"	921-5500
912-5567	67"	921-5500
912-5573	73"	921-5500
912-5579	79"	921-5500

Assembly instructions included with guard

Note: When installing Guards observe the following:

- 1) Install proper nylon bearing (See Page 13)
- 2) Guards must rotate freely on yokes

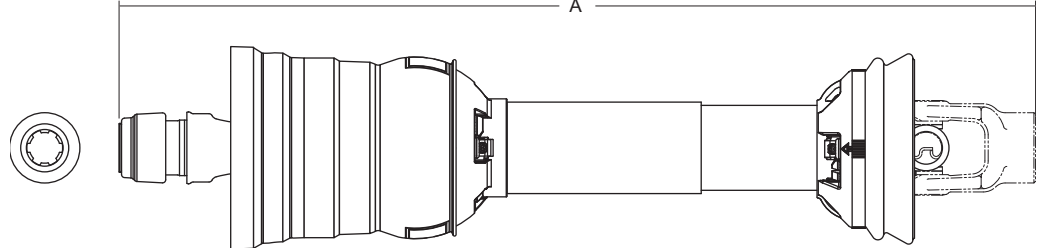
Easy Lock™ Replacement Kit

Part Number: 13005000 (4-per Kit)



CONSTANT VELOCITY

Drivelines



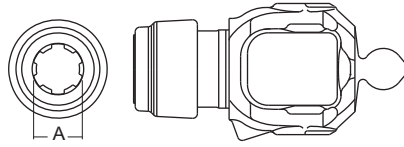
Stock Number	Shaft Size	Dim. "A" Overall Compressed Length	Maximum Overall Extended Operating Length	Tractor Yoke	Implement Yoke
14505548	1 11/16" x 20 Spl.	48"	67"	1 3/8" x 6 Spl.	*
14505551	1 11/16" x 20 Spl.	51"	68"	1 3/8" x 6 Spl.	1 3/4" x 20 Spl. w/Clamp
14505555	1 11/16" x 20 Spl.	55"	77"	1 3/8" x 6 Spl.	1 3/8" x 6 Spl. w/Clamp
14505558	1 11/16" x 20 Spl.	58"	80"	1 3/8" x 6 Spl.	*
14505567	1 11/16" x 20 Spl.	67"	84"	1 3/8" x 6 Spl.	*
14505573	1 11/16" x 20 Spl.	73"	92"	1 3/8" x 6 Spl.	*
14505579	1 11/16" x 20 Spl.	79"	96"	1 3/8" x 6 Spl.	*
14515555	1 11/16" x 20 Spl.	55"	77"	1 3/8" x 6 Spl.	1 3/4" x 20 Spl. w/Clamp
14605548	1 11/16" x 20 Spl.	48"	67"	1 3/8" x 21 Spl.	*
14605551	1 11/16" x 20 Spl.	51"	68"	1 3/8" x 21 Spl.	1 3/4" x 20 Spl. w/Clamp
14605555	1 11/16" x 20 Spl.	55"	77"	1 3/8" x 21 Spl.	1 3/8" x 6 Spl. w/Clamp
14605558	1 11/16" x 20 Spl.	58"	80"	1 3/8" x 21 Spl.	*
14605567	1 11/16" x 20 Spl.	67"	84"	1 3/8" x 21 Spl.	*
14605573	1 11/16" x 20 Spl.	73"	92"	1 3/8" x 21 Spl.	*
14605579	1 11/16" x 20 Spl.	79"	96"	1 3/8" x 21 Spl.	*
14615555	1 11/16" x 20 Spl.	55"	77"	1 3/8" x 21 Spl.	1 3/4" x 20 Spl. w/Clamp
14625555	1 11/16" x 20 Spl.	55"	77"	1 3/8" x 21 Spl.	1 3/8" x 21 Spl. w/Clamp
14635555	1 11/16" x 20 Spl.	55"	77"	1 3/8" x 21 Spl.	1 3/8" x 21 Spl. w/Pinhole
14705548	1 11/16" x 20 Spl.	48"	67"	1 3/4" x 20 Spl.	*
14705551	1 11/16" x 20 Spl.	51"	68"	1 3/4" x 20 Spl.	1 3/4" x 20 Spl. w/Clamp
14705555	1 11/16" x 20 Spl.	55"	77"	1 3/4" x 20 Spl.	1 3/8" x 6 Spl. w/Clamp
14705558	1 11/16" x 20 Spl.	58"	80"	1 3/4" x 20 Spl.	*
14705567	1 11/16" x 20 Spl.	67"	84"	1 3/4" x 20 Spl.	*
14705573	1 11/16" x 20 Spl.	73"	92"	1 3/4" x 20 Spl.	*
14705579	1 11/16" x 20 Spl.	79"	96"	1 3/4" x 20 Spl.	*
14715555	1 11/16" x 20 Spl.	55"	77"	1 3/4" x 20 Spl.	1 3/4" x 20 Spl. w/Clamp
14725555	1 11/16" x 20 Spl.	55"	77"	1 3/4" x 20 Spl.	1 3/8" x 21 Spl. w/Clamp
14735555	1 11/16" x 20 Spl.	55"	77"	1 3/4" x 20 Spl.	1 3/8" x 21 Spl. w/Pinhole

*(Order implement yoke and cross & bearing kit separately as required)

50° Constant Velocity Driveline Components

Tractor Yoke

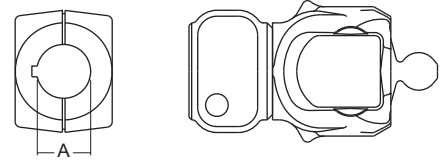
Repair Kit - Page 81



Stock Number	Series	Dim. "A" Bore
150-1406	14	1 3/8" × 6 Spl.
150-1421	14	1 3/8" × 21 Spl.
151-3506	35	1 3/8" × 6 Spl.
151-3521	35	1 3/8" × 21 Spl.

Clamp Yoke

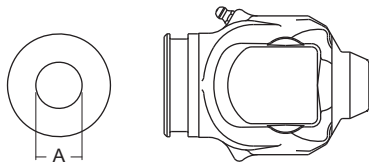
With Keyway



Stock Number	Series	Dim. "A" Bore
857-1420	14	1 1/4"
857-3520	35	1 1/4"
857-3524	35	1 1/2"

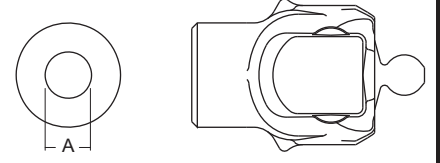
Shaft Weld Yoke

(Guard must rotate freely on the yoke)



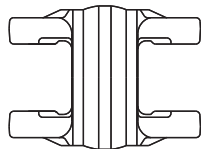
Stock Number	Series	Dim. "A" Bore
350-1400	14	1" Rd.

Stock Bore



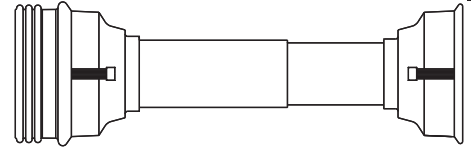
Stock Number	Series	Dim. "A" Bore
859-1400	14	1"
859-3500	35	1"

Center Housing



Stock Number	Series
555-1400	14
555-3500	35

Guard



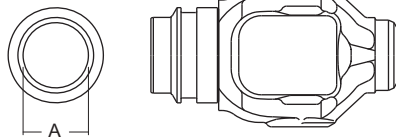
Stock Number
950-1430

(Guard must rotate freely on the yokes)

NOTE:

*Outer Guard is larger in order to shield CV half of the driveline.
*50° CV joint and shaft half most commonly connects to the implement...ie: grain auger. Also, ball shear connects to the tractor PTO, which is the tube half.

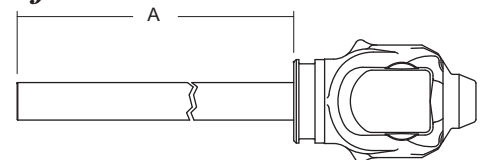
Tube Yoke



(Guard must rotate freely on yoke)

Stock Number	Series	Dim. "A" Bore
750-3500	35	1 5/8"

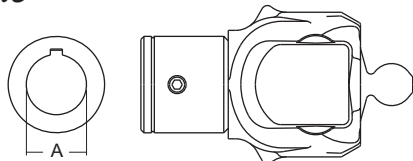
Yoke & Shaft



Stock Number	Series	Shaft Size	Dim. "A"
10501400	14	1" × 1 1/8" Rect.	29.38"

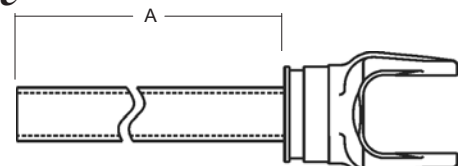
Implement Yoke

Round Bore
with keyway and pinhole



Stock Number	Series	Dim. "A" Bore
850-1420	14 (w/1/4" keyway & 2 set screws)	1 1/4"
851-1420	14 (w/1/4" keyway & 1/4" pinhole)	1 1/4"
850-1422	14 (w/5/16" keyway & 1/4" pinhole)	1 3/8"
850-3522	35 (w/5/16" keyway & 1/4" pinhole)	1 3/8"

Yoke & Tube

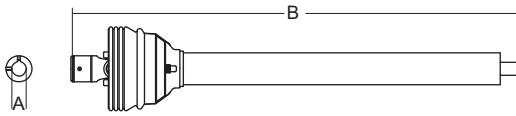


Stock Number	Series	Shaft Size	Dim. "A"
11501400	14	1 1/4" × 1 3/8" Rect.	34"

CONSTANT VELOCITY

50° Constant Velocity Driveline Components

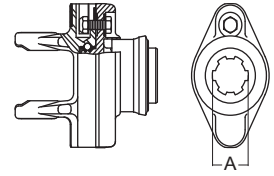
Joint & Shaft Half with Guard



With Keyway, (2) Set Screws and Pinhole

Stock Number	Series	Dim. "A" Bore	Dim. "B"
19501420	14	1 1/4" Rd.	39.63"

Ball Shear Device

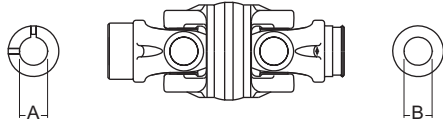


With Spring Lok

Stock Number	Dim. "A" Bore	Shear Bolt
104-1406	1 3/8" x 6 Spl.	(1) 5/16" - 18 Gr. 5

CONSTANT VELOCITY

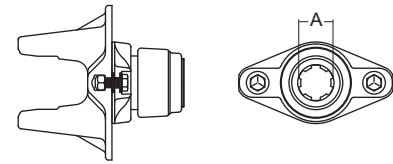
Constant Velocity Joint



Stock Number	Series	Dim. "A" Bore	Dim. "B" Bore
18501420	14	1 1/4" Rd.*	1"
18511420	14	1 1/4" Rd.**	1"

* (w/1/4" keyway & 2 set screws)

** (w/keyway and pinhole)



Stock Number	Dim. "A" Bore	Shear Bolt
104-3506	1 3/8" x 6 Spl.	(2) 3/8" - 16 Gr. 5

Applications of 50° CV

- | | |
|---------------------------|--------------------|
| Grain Augers | Mower Conditioners |
| Compost Turners | Potato Harvesters |
| Front-Mount Riding Mowers | Tub Grinders |

METRIC SECTION

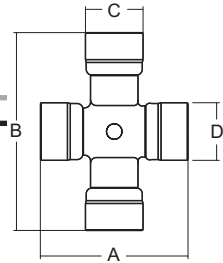
Interchanges with Walterscheid (AW21)

2380 Series

Cross & Bearing Kit (R-Kit)

Snap Ring Located In Yoke

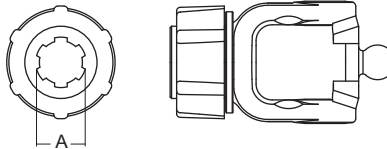
Stock Number	Dim. "A"		Dim. "B"		Dim. "C"		Dim. "D"	
	mm	in	mm	in	mm	in	mm	in
200-7491	74.6	2 15/16" (2.93)	91.0	3 37/64" (3.58)	23.8	15/16" (.93)	27.0	1 1/16" (1.06)



Cross & Bearing Kit (E-Kit)

Stock Number	Dim. "A"		Dim. "B"		Dim. "C"		Dim. "D"	
	mm	in	mm	in	mm	in	mm	in
201-7491	74.6	2 15/16" (2.93)	91.0	3 37/64" (3.58)	23.8	15/16" (.93)	27.0	1 1/16" (1.06)

Tractor Yoke



Safety Slide Lock
Repair Kit - Page 137
Ring Groove

Stock Number	Dim. "A" Bore
107-8406	1 3/8" x 6 Spl.
107-8421	1 3/8" x 21 Spl.

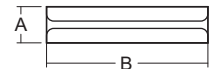
Inner Tube



34.5 (4.0 Wall)
1.358 (.158 Wall)"
Rilsan Coating

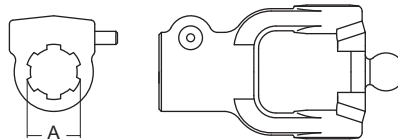
Stock Number	Length	
	mm	in
406-7234	1000	39 3/8" (39.37)

Roll Pin



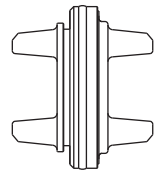
Stock Number	Dim. "A"		Dim. "B"	
	mm	in	mm	in
508-1065	10.0	25/64" (.393)	65.0	2 9/16" (2.56)

Quick Disconnect
Repair Kit - Page 137



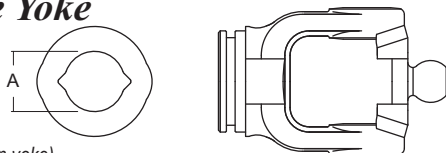
Stock Number	Dim. "A" Bore
109-8406	1 3/8" x 6 Spl.

Center Housing



Stock Number
550-7400

Inner Profile Yoke



With Bearing Groove
(Guard must rotate freely on yoke)

Stock Number	Dim. "A" Bore	
	mm	in
301-7434	34.5	1 23/64" (1.36)
301-7439	39.5	1 9/16" (1.56)

Outer Tube



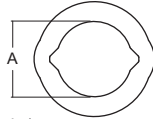
41.0 (3.0 Wall)
Special

Stock Number	Length	
	mm	in
606-7241	1000	39 3/8" (39.37)

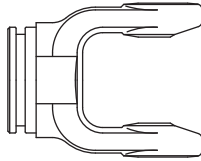
CONSTANT
VELOCITY

2380 Series

Outer Profile Yoke

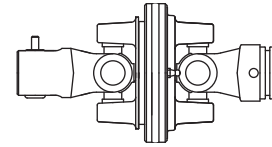


With Bearing Groove
(Guard must rotate freely on yoke)



Stock Number	Dim. "A" Bore	
	mm	in
700-7441	41.0	1.614"

80° C.V. Joint

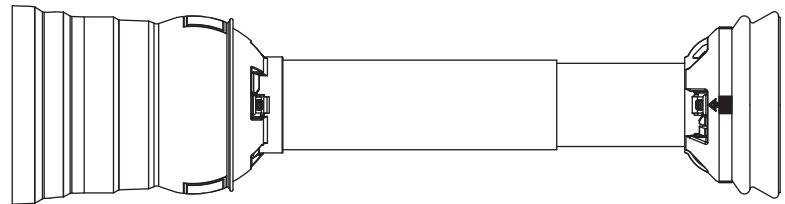


Stock Number	Dim. "A" Bore	Dim. "B" Bore
	15507406	1 3/8" x 6 Spl.

CONSTANT VELOCITY

Guard

Bearings supplied with Guard

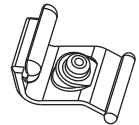


Stock Number	Overall Driveline Length	Bearing Kit (2 per kit)
912-7448	48"	961-0021

Assembly instructions included with guard
Note: When installing Guards observe the following:
 1) Install proper nylon bearing (See Page 14)
 2) Guards must rotate freely on yokes

Easy Lock™ Replacement Kit

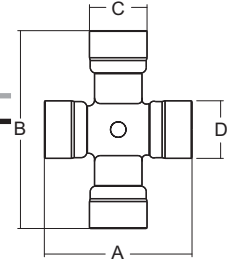
Part Number: 13005000 (4-per Kit)



Cross & Bearing Kit (R-Kit)

Snap Ring Located In Yoke

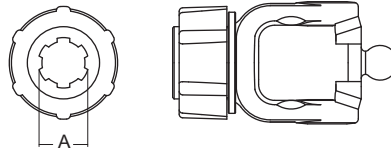
Stock Number	Dim. "A"		Dim. "B"		Dim. "C"		Dim. "D"	
	mm	in	mm	in	mm	in	mm	in
200-7694	76	2 63/64" (2.99)	94.0	3 45/64" (3.700)	27	1 1/16" (1.06)	32	1 7/64" (1.26)



Cross & Bearing Kit (E-Kit)

Stock Number	Dim. "A"		Dim. "B"		Dim. "C"		Dim. "D"	
	mm	in	mm	in	mm	in	mm	in
201-7694	76	2 63/64" (2.99)	94.0	3 45/64" (3.700)	27	1 1/16" (1.06)	32	1 7/64" (1.26)

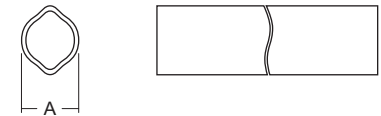
Tractor Yoke



Safety Slide Lock
Repair Kit - Page 137

Stock Number	Dim. "A" Bore
107-7606	1 3/8" x 6 Spl.
107-7620	1 3/4" x 20 Spl.
107-7621	1 3/8" x 21 Spl.

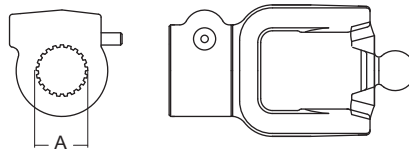
Inner Tube



40.0 (4.8 Wall)"
Rilsan Coating

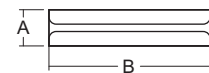
Stock Number	Dim. "A"		Length	
	mm	in	mm	in
402-7639	40.0	1 9/16" (1.56)	1000	39 3/8" (39.37)

Quick Disconnect
Repair Kit - Page 137



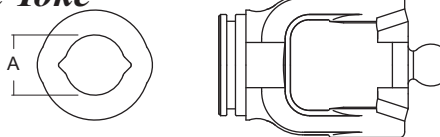
Stock Number	Dim. "A" Bore
109-7606	1 3/8" x 6 Spl.
109-7620	1 3/4" x 20 Spl.
109-7621	1 3/8" x 21 Spl.

Roll Pin



Stock Number	Dim. "A"		Dim. "B"	
	mm	in	mm	in
508-1080	10.0	13/32" (.406)	80.0	3 5/32" (3.156)

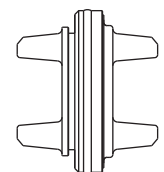
Inner Profile Yoke



With Bearing Groove
(Guard must rotate freely on yoke)

Stock Number	Dim. "A" Bore
301-7639	40.0 1 9/16" (1.56)

Center Housing



550-7600

CONSTANT VELOCITY

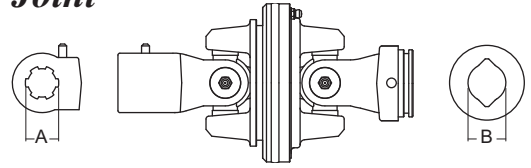
Outer Tube



48.0 (4.0 Wall)
4.0 Wall (Special)

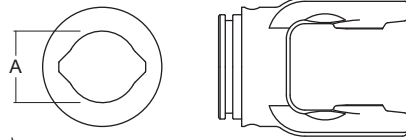
Stock Number	Length	
	mm	in
606-7648	1000	39 3/8" (39.37)

80° C.V. Joint



Stock Number	Dim. "A"	Dim. "B"
	Bore	Bore
15507640	1 3/8" x 6 Spl.	40.0mm (1.562")

Outer Profile Yoke



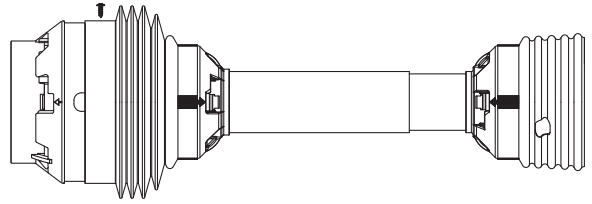
With Bearing Groove
(Guard must rotate freely on yoke)

Stock Number	Dim. "A" Bore	
	mm	in
700-7648	48.0	1 7/8" (1.890)

CONSTANT VELOCITY

2480 Series (cont'd.)

Guard



Bearings supplied with Guard

Stock Number	Overall Driveline Length	Bearing Kit (2 per kit)
912-7648	48"	961-0035
912-7660	60"	961-0035

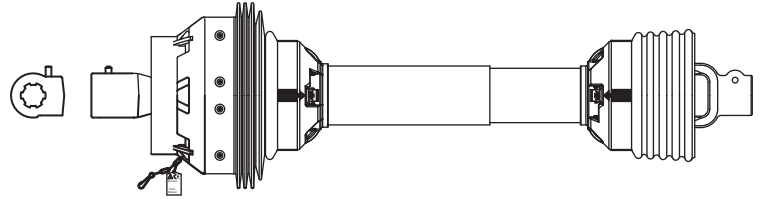
Assembly instructions included with guard
Note: When installing Guards observe the following:
 1) Install proper nylon bearing (See Page 14)
 2) Guards must rotate freely on yokes

Easy Lock™ Replacement Kit

Part Number: 13005000 (4-per Kit)



Drivelines



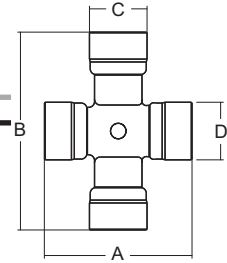
Stock Number	Tractor Yoke	Implement Yoke	Overall Driveline Length
14507648	1 3/8" x 6 Spl.	1 3/8" x 6 Spl.	48"
14507660	1 3/8" x 6 Spl.	1 3/8" x 6 Spl.	60"
14517660	1 3/8" x 6 Spl.	1 3/8" x 6 Spl. Ball Shear	60"
14607648	1 3/8" x 21 Spl.	1 3/8" x 6 Spl.	48"
14607660	1 3/8" x 21 Spl.	1 3/8" x 6 Spl.	60"
14617660	1 3/8" x 21 Spl.	1 3/8" x 6 Spl. Ball Shear	60"
14717660	1 3/4" x 20 Spl.	1 3/8" x 6 Spl. Ball Shear	60"

CONSTANT VELOCITY

**Cross & Bearing Kit
(R-Kit)**

Snap Ring Located In Yoke

Stock Number	Dim. "A"		Dim. "B"		Dim. "C"		Dim. "D"	
	mm	in	mm	in	mm	in	mm	in
200-7906	88.8	3.49"	106.0	4.17"	32.0	1.26"	36.0	1.42"



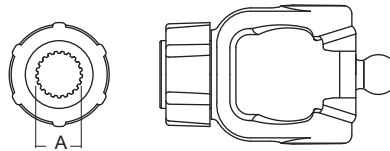
**Cross & Bearing Kit
(E-Kit)**

Stock Number	Dim. "A"		Dim. "B"		Dim. "C"		Dim. "D"	
	mm	in	mm	in	mm	in	mm	in
201-7906	88.8	3.49"	106.0	4.17"	32.0	1.26"	36.0	1.42"

CONSTANT VELOCITY

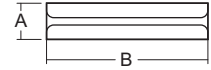
Tractor Yoke

Safety Slide Lock
Repair Kit - Page 137



Stock Number	Dim. "A" Bore	
	mm	in
107-7906	1 3/8" x 6 Spl.	
107-7920	1 3/4" x 20 Spl.	
107-7921	1 3/8" x 21 Spl.	

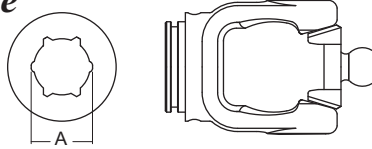
Roll Pin



Stock Number	Dim. "A"		Dim. "B"	
	mm	in	mm	in
508-1090	10	13/32" (.41)	90	3 1/2" (3.54)

Inner Profile Yoke

With Bearing Groove
(Guard must rotate freely on yoke)



Stock Number	Dim. "A" Bore	
	mm	in
302-7951	51.0	2" (2.0)

Outer Tube

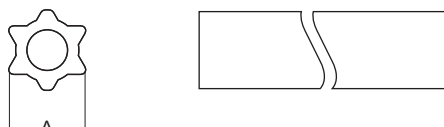
61.0 x 4.0
(Special)



Stock Number	Length	
	mm	in
600-7961	1500	59 1/16" (59.0)
604-7961	1000	39 3/8" (39.37)

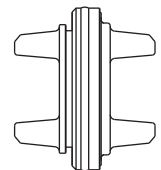
Inner Tube

Rilsan Coating



Stock Number	Dim. "A"		Length	
	mm	in	mm	in
406-7951	51.0	2.01"	1000	39 3/8" (39.37)

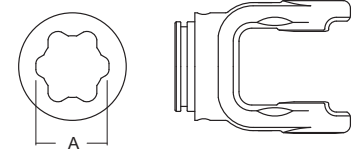
Center Housing



Stock Number
550-7900

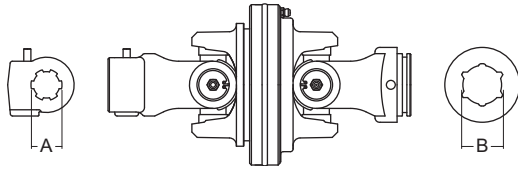
Outer Profile Yoke

With Bearing Groove
(Guard must rotate freely on yoke)



Stock Number	Dim. "A" Bore	
	mm	in
700-7961	61.0	2 3/8" (2.402)

80° C.V. Joint



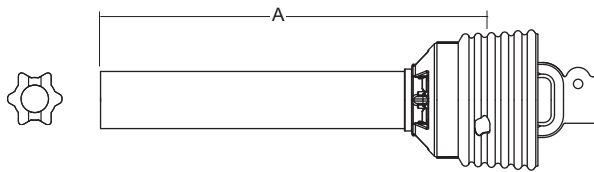
Stock Number	Dim. "A" Bore	Dim. "B" Bore
15507951	1 3/8" × 6 Spl.	51.0mm (2.000")
15607951	1 3/8" × 21 Spl.	51.0mm (2.000")
15707951	1 3/4" × 20 Spl.	51.0 mm (2.000")

Joint & Shaft w/Guard



Stock Number	Fits Profile Tube	Dim "A"	Tractor Yoke
93-14507951	51.0 (Star)	26.0"	1 3/8" × 6 Spl.
93-14517955	51.0 (Star)	30.0"	1 3/8" × 6 Spl.
93-14607951	51.0 (Star)	26.0"	1 3/8" × 21 Spl.
93-14617955	51.0 (Star)	30.0"	1 3/8" × 21 Spl.
93-14707951	51.0 (Star)	26.0"	1 3/4" × 20 Spl.
93-14717955	51.0 (Star)	30.0"	1 3/4" × 20 Spl.

Yoke & Tube Assembly w/Guard



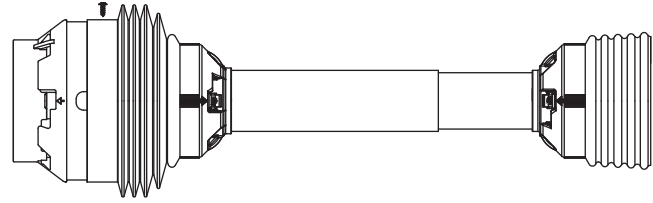
Stock Number	Fits Profile Tube	Dim. "A"	Implement Yoke
92-14507951	51.0 (Star)	30.75"	1 3/4" × 20 Spl. w/ Clamp
92-14507955	51.0 (Star)	34.625"	1 3/8" × 6 Spl. w/Clamp
92-14517955	51.0 (Star)	34.625"	1 3/4" × 20 Spl. w/Clamp
92-14627955	51.0 (Star)	34.625"	1 3/8" × 21 Spl. w/Clamp
92-14637955	51.0 (Star)	34.625"	1 3/8" × 21 Spl. w/Pinhole

*CL = Centerline

**CONSTANT
VELOCITY**

2580 Series

Guard



Bearings supplied with Guard

Stock Number	Overall Driveline Length	Bearing Kit (2 per kit)
912-7948	48"	961-0036
912-7960	60"	961-0036

Assembly instructions included with guard
Note: When installing Guards observe the following:
 1) Install proper nylon bearing (See Page 14)
 2) Guards must rotate freely on yokes

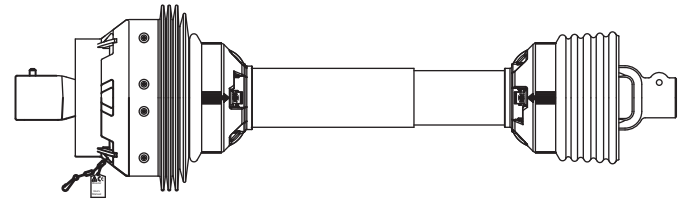
Easy Lock™ Replacement Kit

Part Number: 13005000 (4-per Kit)



CONSTANT VELOCITY

Drivelines



Stock Number	Tractor Yoke	Implement Yoke	Length
14507948	1 3/8" x 6 Spl.	1 3/8" x 6 Spl.	48"
14507951	1 3/8" x 6 Spl.	1 3/4" x 20 Spl. w/Clamp	51"
14507955	1 3/8" x 6 Spl.	1 3/8" x 6 Spl. w/Clamp	55"
14507960	1 3/8" x 6 Spl.	1 3/8" x 6 Spl.	60"
14517955	1 3/8" x 6 Spl.	1 3/4" x 20 Spl. w/Clamp	55"
14547955	1 3/8" x 6 Spl.	1 3/4" x 6 Spl. w/Clamp	55"
14607948	1 3/8" x 21 Spl.	1 3/8" x 6 Spl.	48"
14607951	1 3/8" x 21 Spl.	1 3/4" x 20 Spl. w/Clamp	51"
14607955	1 3/8" x 21 Spl.	1 3/8" x 6 Spl. w/Clamp	55"
14607960	1 3/8" x 21 Spl.	1 3/8" x 6 Spl.	60"
14607962	1 3/8" X 21 Spl. Safety Slide Lock	1 3/4" Rd. w/3/8" Keyway	62"
14617955	1 3/8" x 21 Spl.	1 3/4" x 20 Spl. w/Clamp	55"
14627955	1 3/8" x 21 Spl.	1 3/8" x 21 Spl. w/Clamp	55"
14637955	1 3/8" x 21 Spl.	1 3/8" x 21 Spl. w/Pinhole	55"
14647955	1 3/8" x 21 Spl.	1 3/4" x 6 Spl. w/Clamp	55"
14707951	1 3/4" x 20 Spl.	1 3/4" x 20 Spl. w/Clamp	51"
14707955	1 3/4" x 20 Spl.	1 3/8" x 6 Spl. w/Clamp	55"
14707962	1 3/8" X 21 Spl. Safety Slide Lock	1 3/4" Rd. w/3/8" Keyway	62"
14717955	1 3/4" x 20 Spl.	1 3/4" x 20 Spl. w/Clamp	55"
14727955	1 3/4" x 20 Spl.	1 3/8" x 21 Spl. w/Clamp	55"
14737955	1 3/4" x 20 Spl.	1 3/8" x 21 Spl. w/Pinhole	55"
14747955	1 3/4" x 20 Spl.	1 3/4" x 6 Spl. w/Clamp	55"

APPLICATIONS

North American Replacement Drivelines

FLEXWING MOWERS

Stock Number	Series	Category	Tractor Yoke	Clamp-Style Implement Yoke	Overall Compressed Driveline Length
14505551	55	6	1 3/8" x 6 Spl.	1 3/4" x 20 Spl.	51"
14505555	55	6	1 3/8" x 6 Spl.	1 3/8" x 6 Spl.	55"
14515555	55	6	1 3/8" x 6 Spl.	1 3/4" x 20 Spl.	55"
14605551	55	6	1 3/8" x 21 Spl.	1 3/4" x 20 Spl.	51"
14605555	55	6	1 3/8" x 21 Spl.	1 3/8" x 6 Spl.	55"
14615555	55	6	1 3/8" x 21 Spl.	1 3/4" x 20" Spl	55"
14705551	55	6	1 3/4" x 20 Spl.	1 3/4" x 20 Spl.	51"
14705555	55	6	1 3/4" x 20 Spl.	1 3/8" x 6 Spl.	55"
14715555	55	6	1 3/4" x 20 Spl.	1 3/4" x 20 Spl.	55"

PEANUT HARVESTERS

Stock Number	Series	Category	Tractor Yoke	Implement Yoke	Overall Compressed Driveline Length
14625555	55	6	1 3/8" x 21 Spl.	1 3/8" x 21 Spl. (Clamp)	55"
14635555	55	6	1 3/8" x 21 Spl.	1 3/8" x 21 Spl. (Pinhole)	55"
14725555	55	6	1 3/4" x 20 Spl.	1 3/8" x 21 Spl. (Clamp)	55"
14735555	55	6	1 3/4" x 20 Spl.	1 3/8" x 21 Spl. (Pinhole)	55"

ROUND BALERS

Stock Number	Series	Category	Tractor Yoke	Implement Yoke	Overall Compressed Driveline Length
14503500	35	5	1 3/8" x 6 Spl.	1 3/8" x 6 Spl. with 18,000 in-lb Friction Clutch	58"
14503501	35	5	1 3/8" x 6 Spl.	1 3/8" x 21 Spl. with 15,000 in-lb Friction Clutch	67"
14503502	35	5	1 3/8" x 6 Spl.	1 3/8" x 6 Spl. with 15,000 in-lb Friction Clutch	58"
14603500	35	5	1 3/8" x 21 Spl.	1 3/8" x 6 Spl. with 10,000 in-lb Friction Clutch	58"

CONSTANT
VELOCITY

APPLICATIONS

Metric Replacement Driveline

BEET HARVESTERS

Stock #	Tractor Yoke	Machine Yoke	OAL Compressed Driveline Length	Series
14607962	1 3/8" x 21 Spl. Safety Slide Lock	1 3/4" Rd. w/Keyway	62.4"	W/S 2580
14707962	1 3/4" x 20 Spl. Safety Slide Lock	1 3/4" Rd. w/Keyway	62.4"	W/S 2580

CONSTANT
VELOCITY

FLEXWING MOWERS

Stock Number	Series	Tractor Yoke	Clamp-Style Implement Yoke	Overall Compressed Driveline Length
14507951	2580	1 3/8" x 6 Spl.	1 3/4" x 20 Spl.	51"
14507955	2580	1 3/8" x 6 Spl.	1 3/8" x 6 Spl.	55"
14517955	2580	1 3/8" x 6 Spl.	1 3/4" x 20 Spl.	55"
14607951	2580	1 3/8" x 21 Spl.	1 3/4" x 20 Spl.	51"
14607955	2580	1 3/8" x 21 Spl.	1 3/8" x 6 Spl.	55"
14617955	2580	1 3/8" x 21 Spl.	1 3/4" x 20 Spl.	55"
14707951	2580	1 3/4" x 20 Spl.	1 3/4" x 20 Spl.	51"
14707955	2580	1 3/4" x 20 Spl.	1 3/8" x 6 Spl.	55"
14717955	2580	1 3/4" x 20 Spl.	1 3/4" x 20 Spl.	55"

PEANUT HARVESTERS

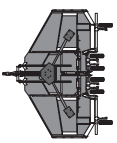
Stock Number	Series	Tractor Yoke	Implement Yoke	Overall Compressed Driveline Length
14627955	2580	1 3/8" x 21 Spl.	1 3/8" x 21 Spl. Clamp	55"
14637955	2580	1 3/8" x 21 Spl.	1 3/8" x 21 Spl. w/Pinhole	55"
14727955	2580	1 3/4" x 20 Spl.	1 3/8" x 21 Spl. Clamp	55"
14737955	2580	1 3/4" x 20 Spl.	1 3/8" x 21 Spl. w/Pinhole	55"

80° CV's for Flex-Wing Cutters - Domestic & Metric

Interchange with **BUSH HOG®**

Model #: 2615, 3615

Also fits other competitive models

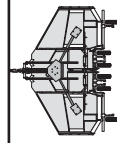


Overall

<u>CV Part #</u>	<u>Tractor Yoke</u>	<u>Implement Compressed Length</u>	<u>Clamp Yoke</u>	<u>Series</u>
Domestic 14505555	1-3/8" x 6 Spline	55"	1-3/8" x 6 Spline	55
Domestic 14605555	1-3/8" x 21 Spline	55"	1-3/8" x 6 Spline	55
Domestic 14705555	1-3/4" x 20 Spline	55"	1-3/8" x 6 Spline	55
Metric 14507955	1-3/8" x 6 Spline	55"	1-3/8" x 6 Spline	BP 8/W/S 2580
Metric 14607955	1-3/8" x 21 Spline	55"	1-3/8" x 6 Spline	BP 8/W/S 2580
Metric 14707955	1-3/4" x 20 Spline	55"	1-3/8" x 6 Spline	BP 8/W/S 2580

Interchange with **RHINO®**

Model #: SR-15, SE-15



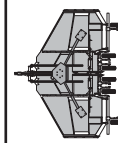
Overall

<u>CV Part #</u>	<u>Tractor Yoke</u>	<u>Implement Compressed Length</u>	<u>Clamp Yoke</u>	<u>Series</u>
Domestic 14505551	1-3/8" x 6 Spline	51"	1-3/4" x 20 Spline	55
Domestic 14605551	1-3/8" x 21 Spline	51"	1-3/4" x 20 Spline	55
Domestic 14705551	1-3/4" x 20 Spline	51"	1-3/4" x 20 Spline	55
Metric 14507951	1-3/8" x 6 Spline	51"	1-3/4" x 20 Spline	BP 8/W/S 2580
Metric 14607951	1-3/8" x 21 Spline	51"	1-3/4" x 20 Spline	BP 8/W/S 2580
Metric 14707951	1-3/4" x 20 Spline	51"	1-3/4" x 20 Spline	BP 8/W/S 2580

Interchange with **DEERE®**

Model #: 1517, 1518, 2018

Also fits other competitive models



Overall

<u>CV Part #</u>	<u>Tractor Yoke</u>	<u>Implement Compressed Length</u>	<u>Clamp Yoke</u>	<u>Series</u>
Domestic 14515555	1-3/8" x 6 Spline	55"	1-3/4" x 20 Spline	55
Domestic 14615555	1-3/8" x 21 Spline	55"	1-3/4" x 20 Spline	55
Domestic 14715555	1-3/4" x 20 Spline	55"	1-3/4" x 20 Spline	55
Metric 14517955	1-3/8" x 6 Spline	55"	1-3/4" x 20 Spline	BP 8/W/S 2580
Metric 14617955	1-3/8" x 21 Spline	55"	1-3/4" x 20 Spline	BP 8/W/S 2580
Metric 14717955	1-3/4" x 20 Spline	55"	1-3/4" x 20 Spline	BP 8/W/S 2580

**CONSTANT
VELOCITY**



GEHL DELUXE - MODEL #2880

- 14503567 - 80° CV D/L 1-3/8x6 Tractor Yoke
- 57015000 - 7" Clutch Pak
- 817-3521 - 1-3/8x21 Clutch Yoke
- 200-3500 - 35 Series Cross Kit
- COMPLETE D/L PART NO.: 14503501

DEERE - MODEL #467 and 466

- 14503558 - 80° CV D/L 1-3/8x6 Tractor Yoke
- 59018000 - 9" Clutch Pak
- 817-3506 - 1-3/8x6 Clutch Yoke
- 200-3500 - 35 Series Cross Kit
- COMPLETE D/L PART NO.: 14503500

DEERE - MODEL #567 and 566 (1000 RPM)

- 14603558 - 80° CV D/L 1-3/8x21 Tractor Yoke
- 59010000 - 9" Clutch Pak
- 817-3506 - 1-3/8x6 Clutch Yoke
- 200-3500 - 35 Series Cross Kit
- COMPLETE D/L PART NO.: 14603500

CASE - MODEL #8455S and 8455T

- 540 RPM**
- 14503558 - 80° CV D/L 1-3/8x6 Tractor Yoke
- 57015000 - 7" Clutch Pak
- 817-3506 - 1-3/8x6 Clutch Yoke
- 200-3500 - 35 Series Cross Kit
- COMPLETE D/L PART NO.: 14503502

VERMEER - MODEL #604K

- 14503558 - 80° CV D/L 1-3/8x6 Tractor Yoke
- 57015000 - 7" Clutch Pak
- 817-3506 - 1-3/8x6 Clutch Yoke
- 200-3500 - 35 Series Cross Kit
- COMPLETE D/L PART NO.: 14503502

HESSTON - MODEL #555S and 555T

- 14503558 - 80° CV D/L 1-3/8x6 Tractor Yoke
- 57015000 - 7" Clutch Pak
- 817-3506 - 1-3/8x6 Clutch Yoke
- 200-3500 - 35 Series Cross Kit
- COMPLETE D/L PART NO.: 14503502

PARTS FOR TORQMASTER CLUTCH

SPRING

7" CLUTCH	9" CLUTCH
987-9000	98910000
98712000	98915000
98715000	98918000
98718000	

SEPARATOR PLATE

990-7000	990-9000
	<u>DISC</u>
970-7000	970-9000

1000 RPM

- 14603558 - 80° CV D/L 1-3/8x21 Tractor Yoke
- 57015000 - 7" Clutch Pak
- 817-3506 - 1-3/8x6 Clutch Yoke
- 200-3500 - 35 Series Cross Kit
- COMPLETE D/L PART NO.: 14603502

- 14603558 - 80° CV D/L 1-3/8x21 Tractor Yoke
- 57015000 - 7" Clutch Pak
- 817-3506 - 1-3/8x6 Clutch Yoke
- 200-3500 - 35 Series Cross Kit
- COMPLETE D/L PART NO.: 14603502

- 14603558 - 80° CV D/L 1-3/8x21 Tractor Yoke
- 57015000 - 7" Clutch Pak
- 817-3506 - 1-3/8x6 Clutch Yoke
- 200-3500 - 35 Series Cross Kit
- COMPLETE D/L PART NO.: 14603502

CONSTANT
VELOCITY

